

HARBOUR

HOTELS

Harbour Hotel Group

Wardrobe Catalogue

Spring 2022

V8

[4couture.com](https://www.4couture.com)

DELIVERING STYLE

INDEX

Page 3.	How to use the Harbour Hotels Catalogue	Page 125.	Southampton Harbour Hotel
Page 4.	Upper Deck Wardrobe	Page 126.	HarBar
Page 5.	Upper Deck Floor Team	Page 133.	HarBar Managers
Page 12.	Upper Deck Managers	Page 135.	Southampton HH Reception
Page 22.	The Jetty	Page 136.	Southampton Receptionists
Page 23.	The Jetty Floor Team	Page 139.	Southampton Porters
Page 30.	The Jetty Managers	Page 145.	Southampton Reception MGRs
Page 37.	Harbour Hotel Bars	Page 150.	Richmond Harbour Hotel
Page 38.	Bar Teams	Page 151.	Reception Team
Page 46.	Bar Managers	Page 157.	The Gate Floor Team
Page 53.	Housekeeping	Page 159.	The Gate Bar Team
Page 54.	HSK Room Attendants	Page 161.	Fowey Harbour Hotel
Page 59.	HSK Managers	Page 162.	Reception Team
Page 69.	Maintenance	Page 170.	F&B Team
Page 75.	HarSpa	Page 180.	Padstow Harbour Hotel
Page 76.	HarSpa Therapists & Managers	Page 181.	F&B Team
Page 82.	HarSpa Attendants	Page 193.	St Ives Harbour Hotel
Page 85.	Juice Bar	Page 194.	F&B Team
Page 95.	HarSpa Gym PT's	Page 200.	Guildford Harbour Hotel
Page 96.	Reception Team	Page 201.	The Long Bar
Page 108.	Sales & Events Team	Page 206.	Sales & Events Team
Page 114.	The Kings Arms	Page 207.	Harbour Beach Club
Page 115.	F&B Team	Page 208.	F&B Daytime Look
Page 116.	Sales & Events Team	Page 214.	F&B Evening Look
Page 119.	Froyle & Northbrook Park	Page 219.	F&B Supervisors
		Page 224.	F&B Managers
		Page 229.	Reception
		Page 236.	Porters
		Page 243.	Miscellaneous Aprons
		Page 245.	HHG Group Merchandise
		Page 247.	Contact us

How to use this catalogue...

Welcome to the Harbour Hotels wardrobe catalogue, all the garments that you'll need for each role and department within the group can be found in the following pages.

If at any time you need help in collating your order or if you have a special request then please pick up the phone and chat to one of the team, we'd love to help.

Once you've selected your garments and sizes, we'll provide an estimate with the total cost to enable you to raise a PO. Please note, all orders will require an approved PO before we can begin production.

Don't worry if you're unsure of how many garments to order per person as we have the set guidelines depending upon hours worked (full / part time) and will supply the approved quantities to allow for wash and wear.

Once we've received your PO, please allow approx 10 working days for your garments to be despatched. Should you have an urgent request, do let us know this from the outset and we'll do our best to accommodate you.

If at any time you require assistance with sizes or garment advice, please speak with us before confirming your order so you can avoid incurring any unnecessary returns charges.

Happy browsing 😊

PS. Our number is 0845 226 0880 or you can email harbourhotels@4couture.com at any time!

Upper Deck Wardrobe

Floor Team Pages 5 – 11
Managers Pages 12 - 21





DESCRIPTION	SIZING RANGE	PRICE
<p>Women's Blue Contrast Shirt – High quality combed cotton, easy care shirt with contrasting buttons, contrast fabric under collar, placket and bottom sleeve. In a modern fit with cutting seams at the back and sewn down over the bust to prevent gaping. This garment fits true to size.</p> <p>Branding: Garment is supplied plain</p> <p>Fabric: 100% Cotton</p>	XS – UK6 S – UK8 M – UK10/12 L – UK14 XL – UK16 2XL – UK18	£41



DESCRIPTION	SIZING RANGE	PRICE
<p>Women's Black Slim Leg Trousers – Slim leg trouser with flat front design, side pockets and mock hip pockets. The slimmest style in the range for a contemporary look.</p> <p>Branding: Harbour Hotels tax tab on the back waistband</p> <p>Fabric: 64% Polyester, 34% Viscose, 2% Elastane</p>	UK4 – UK24 Leg lengths available: Short 27" Regular 29" Long 31" XL 33" & 36" unfinished	£35

[Back to Index Page](#)



DESCRIPTION	SIZING RANGE	PRICE
<p>Women's Black Tapered Leg Trouser – Contemporary cut for a slimmer look that tapers to the ankle. 2 side pockets, mock rear pockets, front hook fastening and half lined. True to size and great worn as 7/8 length.</p> <p>Branding: Harbour Hotels tax tab on the back right pocket</p> <p>Fabric: 54% Polyester, 44% Wool, 2% Lycra, 270gsm, machine washable</p>	<p>UK4 – UK24</p> <p>Inside leg lengths available: Short 27" Regular 29" Long 31" X Long 33" & 36" unfinished</p>	£44



DESCRIPTION	SIZING RANGE	PRICE
<p>Women's Black Straight Leg Trouser – Single button front fastening with a comfortable waistband, great style if you want comfort around your tummy. Key card pocket and fit is true to size.</p> <p>Branding: Harbour Hotels tax tab on the back waistband</p> <p>Fabric: 54% Polyester, 44% Wool, 2% Lycra, 270gsm, machine washable</p>	<p>UK6 – UK24</p> <p>Inside leg lengths available; Short 27" Regular 29" Long 31" X Long 33" & 36" unfinished</p>	£44

[Back to Index Page](#)



DESCRIPTION	SIZING RANGE	PRICE
<p>Women's Black Straight Skirt – Straight style with centre vent, shaped back panels and full stretch lining. Sits on the natural waist, simple yet classic style and fit is true to size.</p> <p>Branding: Harbour Hotels tax tab on the back right waistband</p> <p>Fabric: 54% Polyester, 44% Wool, 2% Lycra, 270gsm, machine washable</p>	<p>UK4 – UK24 Regular 22"</p> <p>UK8 – UK24 Long 25"</p> <p>UK8 – UK24 X Long 27"</p>	£36



DESCRIPTION	SIZING RANGE	PRICE
<p>Women's Black A-Line Skirt – Flared skirt with front seam and kick pleat detail. Narrow waistband that sits high on the waist, fob pocket and full stretch lining. Super comfortable to wear and fits true to size.</p> <p>Branding: Harbour Hotels tax tab on the back right waistband</p> <p>Fabric: 54% Polyester, 44% Wool, 2% Lycra, 270gsm, machine washable</p>	<p>UK6 – UK24</p> <p>Available in regular length only 22"</p>	£39

[Back to Index Page](#)



DESCRIPTION	SIZING RANGE	PRICE
<p>NEW 2022 Upper Deck Navy Apron – This is the Jetty apron but in Navy. Wide waist apron, extra hard wearing with anti-tangle ties that won't tangle when washed. Centre pocket which is customised to make 2 front pockets for ease. Can be washed on an industrial wash of 65c.</p> <p>Branding: Embroidered Upper Deck logo in Orange thread to the left bottom side of pocket when worn & Harbour Hotels tax tab</p> <p>Fabric: 65% Polyester, 35% Cotton, 245gsm</p>	One Size 91cm wide x 61cm long	£17

DESCRIPTION	SIZING RANGE	PRICE

[Back to Index Page](#)



DESCRIPTION	SIZING RANGE	PRICE
<p>Men's Blue Contrast Shirt – High quality combed cotton, easy care shirt with contrasting buttons, contrast fabric under collar, placket and bottom sleeve. In a modern contemporary fit with cutting seams at the back. This garment fits true to size.</p> <p>Branding: Garment is supplied plain</p> <p>Fabric: 100% Cotton</p>	<p>S – 36" M – 38" L – 40" XL – 42" 2XL – 44" 3XL – 46" chest</p>	£38.75



DESCRIPTION	SIZING RANGE	PRICE
<p>Men's Black Super Slim Trousers – Flat front, slim fit trouser which is the slimmest in the range and as close to a high street skinnier style. Great for a contemporary yet smart look.</p> <p>Branding: Harbour Hotels tax tab on back right pocket</p> <p>Fabric: 64% Polyester, 34% Viscose, 2% Elastane</p>	<p>28" – 40" waist</p> <p>Inside leg lengths Available; Short 29.5" Regular 31.5" Long 33" & 36" unfinished</p>	£35

[Back to Index Page](#)



DESCRIPTION	SIZING RANGE	PRICE
<p>Men's Black Slim Leg Trousers – Slim fit with flat front style, 2 side pockets and 1 rear pocket. Trousers taper toward the ankle and are great for a contemporary look on a slim build.</p> <p>Branding: Harbour Hotels tax tab on the back right pocket</p> <p>Fabric: 54% Polyester, 44% Wool, 2% Lycra, 270gsm, machine washable</p>	<p>28" – 40" Waist</p> <p>Inside leg lengths Available; Short 29.5" Regular 31.5" Long 33" & 36" unfinished</p>	£44



DESCRIPTION	SIZING RANGE	PRICE
<p>Men's Black Tailored Fit Trousers – Flat front trouser with 2 side pockets and 1 rear pocket. In a modern cut, not the slimmest in the range but still offers a contemporary look with more fabric around the thigh area for comfort.</p> <p>Branding: Harbour Hotels tax tab on the back right pocket</p> <p>Fabric: 54% Polyester, 44% Wool, 2% Lycra, 270gsm, machine washable</p>	<p>28" – 46" Waist</p> <p>Inside Leg lengths Available; Short 29.5" Regular 31.5" Long 33" & 36" unfinished</p>	£44

[Back to Index Page](#)



DESCRIPTION	SIZING RANGE	PRICE
<p>NEW 2022 Upper Deck Navy Apron – This is the Jetty apron but in Navy. Wide waist apron, extra hard wearing with anti-tangle ties that won't tangle when washed. Centre pocket which is customised to make 2 front pockets for ease. Can be washed on an industrial wash of 65c.</p> <p>Branding: Embroidered Upper Deck logo in Orange thread to the left bottom side of pocket when worn</p> <p>Fabric: 65% Polyester, 35% Cotton, 245gsm</p>	One Size 91cm wide x 61cm long	£17

DESCRIPTION	SIZING RANGE	PRICE

[Back to Index Page](#)



DESCRIPTION	SIZING RANGE	PRICE
<p>Women's White Contrast Shirt – High quality combed cotton, easy care shirt with contrasting blue fabric under collar, placket and bottom sleeve. In a modern fit with cutting seams at the back and sewn down over the bust to prevent gaping. This garment fits true to size.</p> <p>Branding: Garment is supplied plain</p> <p>Fabric: 100% Cotton</p>	XS – UK6 S – UK8 M – UK10/12 L – UK14 XL – UK16 2XL - UK18	£41



DESCRIPTION	SIZING RANGE	PRICE
<p>Women's Navy Waistcoat – 4 button front with 2 welt pockets and cloth backing. In a longer line length for a clean silhouette and to eliminate any gap between the waistband of the trousers and the waistcoat.</p> <p>Branding: Embroidered 'H' logo in tone-on-tone thread on left chest when worn</p> <p>Fabric: 54% Polyester, 44% Wool, 2% Lycra</p>	UK6 – UK24 Long Length Only	£43

[Back to Index Page](#)



DESCRIPTION	SIZING RANGE	PRICE
<p>Women's Navy Slim Jacket – Short, slim fit 2 button jacket with a slim notch lapel and cutaway front. Front breast darts and jetted pockets with a plain back and tailored back panels. 1 inside pocket - similar to a high street blazer style jacket.</p> <p>Branding: Embroidered 'H' logo in tone-on-tone thread on left lapel when worn</p> <p>Fabric: 54% Polyester, 44% Wool, 2% Lycra</p>	UK6 – UK16 Petite UK4 – UK18 Regular UK6 – UK16 Long	£90



DESCRIPTION	SIZING RANGE	PRICE
<p>Women's Navy Longline Jacket – Semi fitted, tailored 2 button jacket with lapel and pocket contrast detail. Centre vent with tailored back panels and 1 inside pocket. The most traditional style jacket in the range.</p> <p>Branding: Embroidered 'H' logo in tone-on-tone thread on left lapel when worn</p> <p>Fabric: 54% Polyester, 44% Wool, 2% Lycra</p>	UK6 – UK16 Petite UK6 – UK24 Regular UK8 – UK18 Long	£90

[Back to Index Page](#)



DESCRIPTION	SIZING RANGE	PRICE
<p>Women's Navy Box Jacket – 3 button tailored, contemporary fit jacket with peaked lapels and tailored back panels. Centre vent and 1 inside pocket.</p> <p>Branding: Embroidered 'H' logo in tone-on-tone thread on left lapel when worn</p> <p>Fabric: 65% Polyester, 35% Wool</p>	UK6 – UK16 Petite UK6 – UK24 Regular UK8 – UK18 Long	£82



DESCRIPTION	SIZING RANGE	PRICE
<p>Women's Navy Shift Dress – Round neck shift dress with princess seam and short sleeves. Stretch lining with centre vent for a smart look.</p> <p>Branding: Embroidered 'H' logo in tone-on-tone thread on left chest when worn</p> <p>Fabric: 54% Polyester, 44% Wool, 2% Lycra</p>	UK6 – UK24 Regular UK8 – UK20 Long	£73

[Back to Index Page](#)



DESCRIPTION	SIZING RANGE	PRICE
<p>Women's Navy V-Neck Dress – Tailored V-neck dress with short sleeves and vent detail. Full stretch lining with bust darts and centre vent. Slimmer fitting than the 'shift' dress.</p> <p>Branding: Embroidered 'H' logo in tone-on-tone thread on left chest when worn</p> <p>Fabric: 65% Polyester, 35% Wool</p>	<p>UK6 – UK24 Regular UK8 – UK20 Long</p>	£73



DESCRIPTION	SIZING RANGE	PRICE
<p>Women's Navy Slim Leg Trouser – Slimmest style in the range with 2 side pockets, mock hip pockets and belt loops.</p> <p>Branding: Harbour Hotels tax tab on the back waistband</p> <p>Fabric: 54% Polyester, 44% Wool, 2% Lycra, 270gsm, machine washable</p>	<p>UK4 – UK24</p> <p>Inside leg lengths available; Short 27" Regular 29" Long 31" X Long 33" & 36" unfinished</p>	£44

[Back to Index Page](#)



DESCRIPTION	SIZING RANGE	PRICE
<p>Women's Navy Tapered Leg Trousers – Contemporary cut for a slimmer look that tapers to the ankle. 2 side pockets, mock rear pockets, front hook fastening and half lined. True to size and great worn as 7/8 length.</p> <p>Branding: Harbour Hotels tax tab on the back right pocket</p> <p>Fabric: 54% Polyester, 44% Wool, 2% Lycra, 270gsm, machine washable</p>	<p>UK4 – UK24</p> <p>Inside leg lengths available: Short 27" Regular 29" Long 31" X Long 33" & 36" unfinished</p>	£44



DESCRIPTION	SIZING RANGE	PRICE
<p>Women's Navy Straight Leg Trousers – Single button front fastening with a key card pocket and comfortable waistband, great style if you want comfort around your tummy. Fit is true to size.</p> <p>Branding: Harbour Hotels tax tab on the back waistband</p> <p>Fabric: 54% Polyester, 44% Wool, 2% Lycra, 270gsm, machine washable</p>	<p>UK2 – UK24</p> <p>Inside leg lengths available; Short 27" Regular 29" Long 31" X Long 33" & 36" unfinished</p>	£44

[Back to Index Page](#)



DESCRIPTION	SIZING RANGE	PRICE
<p>Women's Navy Straight Skirt – Straight style with centre vent, shaped back panels and full stretch lining. Simple yet classic style and fits true to size.</p> <p>Branding: Harbour Hotels tax tab on the back right waistband</p> <p>Fabric: 54% Polyester, 44% Wool, 2% Lycra, 270gsm, machine washable</p>	<p>UK2 – UK24 Regular 22"</p> <p>UK8 – UK24 Long 25"</p> <p>UK8 – UK24 X Long 27"</p>	£36



DESCRIPTION	SIZING RANGE	PRICE
<p>Women's Navy A-Line Skirt – Flared skirt with front seam and kick pleat detail. Narrow waistband that sits high on the waist, fob pocket and full stretch lining. Super comfortable to wear and fits true to size.</p> <p>Branding: Harbour Hotels tax tab on the back right waistband</p> <p>Fabric: 54% Polyester, 44% Wool, 2% Lycra, 270gsm, machine washable</p>	<p>UK6 – UK24</p> <p>Available in regular length only 22"</p>	£39

[Back to Index Page](#)



DESCRIPTION	SIZING RANGE	PRICE
<p>Men's White Contrast Shirt – High quality combed cotton, easy care shirt with contrasting blue fabric under collar, placket and bottom sleeve. In a modern contemporary fit with cutting seams at the back. This garment fits true to size.</p> <p>Branding: Garment is supplied plain</p> <p>Fabric: 100% Cotton</p>	<p>S – 36" M – 38" L – 40" XL – 42" 2XL – 44" 3XL – 46" chest</p>	£38.75



DESCRIPTION	SIZING RANGE	PRICE
<p>Men's Navy Waistcoat – 5 button front waistcoat with 2 welt pockets. Cloth backed and available in regular length only.</p> <p>Branding: Embroidered 'H' logo in tone-on-tone thread on left chest when worn</p> <p>Fabric: 54% Polyester, 44% Wool, 2% Lycra, 270gsm, machine washable</p>	<p>34" – 56" chest</p>	£43

[Back to Index Page](#)



DESCRIPTION	SIZING RANGE	PRICE
<p>Men's Navy Slim Fit Jacket – Single breasted, 2 button slim fit jacket. Slim lapels with saddle stitching, ticket pocket and slim pocket jets. This jacket is most similar to a high street contemporary jacket. Available in 3 lengths.</p> <p>Branding: Embroidered 'H' logo in tone-on-tone thread on left lapel when worn</p> <p>Fabric: 54% Polyester, 44% Wool, 2% Lycra, 270gsm, machine washable</p>	34" – 44" Short 34" – 46" Regular 34" – 44" Long	£99



DESCRIPTION	SIZING RANGE	PRICE
<p>Men's Navy Tailored Fit Jacket – Single breasted, 2 button tailored jacket. 3 inside pockets, mobile phone pocket and side vents. A little longer in length for a flattering look. Available in 3 lengths.</p> <p>Branding: Embroidered 'H' logo in tone-on-tone thread on left lapel when worn</p> <p>Fabric: 54% Polyester, 44% Wool, 2% Lycra, 270gsm, machine washable</p>	36" – 48" Short 34" – 56" Regular 34" – 48" Long	£99

[Back to Index Page](#)



DESCRIPTION	SIZING RANGE	PRICE
<p>Men's Navy Super Slim Trousers – Slimmest style in the range, most similar to a high street slimmer style. Flat front design.</p> <p>Branding: Harbour Hotels tax tab on back right pocket</p> <p>Fabric: 64% Polyester, 34% Wool, 2% Elastane, machine washable</p>	<p>28" – 40" waist</p> <p>Inside Leg lengths available; Short 29.5" Regular 31.5" Long 33" & 36" unfinished</p>	£35



DESCRIPTION	SIZING RANGE	PRICE
<p>Men's Navy Slim Leg Trousers – Slim fit with flat front style, 2 side pockets and 1 rear pocket. Trousers taper toward the ankle and are great for a contemporary look on a slim build.</p> <p>Branding: Harbour Hotels tax tab on the back right pocket</p> <p>Fabric: 54% Polyester, 44% Wool, 2% Lycra, 270gsm, machine washable</p>	<p>28" – 40" waist</p> <p>Inside leg lengths available; Short 29.5" Regular 31.5" Long 33" & 36" unfinished</p>	£44

[Back to Index Page](#)



DESCRIPTION	SIZING RANGE	PRICE
<p>Men's Navy Tailored Fit Trousers – Flat front trouser with 2 side pockets and 1 rear pocket. In a modern cut, not the slimmest in the range but still offers a contemporary look with more fabric around the thigh area for comfort.</p> <p>Branding: Harbour Hotels tax tab on the back right pocket</p> <p>Fabric: 54% Polyester, 44% Wool, 2% Lycra, 270gsm, machine washable</p>	<p>24" – 46" waist</p> <p>Inside Leg lengths Available; Short 29.5" Regular 31.5" Long 33" & 36" unfinished</p>	<p>£44</p>

DESCRIPTION	SIZING RANGE	PRICE

[Back to Index Page](#)



The Jetty

Floor Team Pages 23 - 29
Managers Pages 30 - 36





DESCRIPTION	SIZING RANGE	PRICE
<p>Women's White Contrast Herringbone Shirt – Light blue contrast inner on the collar and cuff. Princess line panels, dropped shoulders and a neat, feminine collar. Sewn down over the bust to prevent gaping.</p> <p>Branding: Garment is supplied plain</p> <p>Fabric: 75% Cotton, 35% Polyester</p>	UK6 – UK30	£20



DESCRIPTION	SIZING RANGE	PRICE
<p>Women's Black Slim Leg Trouser – Slim leg trouser with flat front design, side pockets and mock hip pockets. The slimmest style in the range for a contemporary look.</p> <p>Branding: Harbour Hotels tax tab on back right waistband</p> <p>Fabric: 64% Polyester, 34% Viscose, 2% Elastane</p>	UK4 – UK24 Inside leg lengths available: Short 27" Regular 29" Long 31" XL 33" & 36" unfinished	£35

[Back to Index Page](#)



DESCRIPTION	SIZING RANGE	PRICE
<p>Women's Black Tapered Leg Trousers – Contemporary cut for a slimmer look that tapers to the ankle. 2 side pockets, mock rear pockets, front hook fastening and half lined. True to size and great worn as 7/8 length.</p> <p>Branding: Harbour Hotels Tax Tab on the back right pocket</p> <p>Fabric: 54% Polyester, 44% Wool, 2% Lycra, 270gsm, machine washable</p>	<p>UK4 – UK24</p> <p>Inside leg lengths available: Short 27" Regular 29" Long 31" X Long 33" & 36" unfinished</p>	£44



DESCRIPTION	SIZING RANGE	PRICE
<p>Women's Black Straight Leg Trousers – Single button front fastening with a key card pocket and comfortable waistband, great style if you want comfort around your tummy. Fit is true to size.</p> <p>Branding: Harbour Hotels Tax Tab on back right waistband</p> <p>Fabric: 54% Polyester, 44% Wool, 2% Lycra, 270gsm, machine washable</p>	<p>UK6 – UK24</p> <p>Inside leg lengths available; Short 27" Regular 29" Long 31" X Long 33" & 36" unfinished</p>	£44

[Back to Index Page](#)



DESCRIPTION	SIZING RANGE	PRICE
<p>Women's Black Straight Skirt – Straight style with centre vent, shaped back panels and full stretch lining. Sits on the natural waist, simple yet classic style and fits true to size.</p> <p>Branding: Harbour Hotels Tax Tab on the back right waistband</p> <p>Fabric: 54% Polyester, 44% Wool, 2% Lycra, 270gsm, machine washable</p>	<p>UK4 – UK24 Regular 22"</p> <p>UK8 – UK24 Long 25"</p> <p>UK8 – UK24 X Long 27"</p>	£36



DESCRIPTION	SIZING RANGE	PRICE
<p>Women's Black A-Line Skirt – Flared skirt with front seam and kick pleat detail. Narrow waistband that sits high on the waist, fob pocket and full stretch lining. Super comfortable to wear and true to size.</p> <p>Branding: Harbour Hotels Tax Tab on the back right pocket</p> <p>Fabric: 54% Polyester, 44% Wool, 2% Lycra, 270gsm, machine washable</p>	<p>UK6 – UK24</p> <p>Available in regular length only 22"</p>	£39

[Back to Index Page](#)



DESCRIPTION	SIZING RANGE	PRICE
<p>The Jetty Blue Waist Apron – Wide waist apron, extra hard wearing with anti-tangle ties that won't tangle when washed. Centre pocket which is customised to make 2 front pockets for ease. Can be washed on an industrial wash at 65c.</p> <p>Branding: Embroidered Jetty logo on front side of apron and Harbour Hotels tax tab on the reverse waistband</p> <p>Fabric: 65% Polyester, 35% Cotton, 245gsm</p>	One Size – 91cm wide x 61cm long	£17

DESCRIPTION	SIZING RANGE	PRICE

[Back to Index Page](#)



DESCRIPTION	SIZING RANGE	PRICE
<p>Men's White Contrast Herringbone Shirt – Contrast colour on the inner collar and cuff. Luxurious herringbone fabric in a tailored fit with a single cuff.</p> <p>Branding: Garment is supplied plain</p> <p>Fabric: 75% Cotton, 25% Polyester</p>	14.5" – 21" collar	£17.75



DESCRIPTION	SIZING RANGE	PRICE
<p>Men's Black Super Slim Trousers – Flat front, slim fit trouser which is the slimmest in the range and as close to a high street skinnier style. Great for a contemporary yet smart look.</p> <p>Branding: Harbour Hotels tax tab on the back right pocket</p> <p>Fabric: 64% Polyester, 34% Viscose, 2% Elastane</p>	28" – 40" waist Inside leg lengths Available; Short 29.5" Regular 31.5" Long 33" & 36" unfinished	£35

[Back to Index Page](#)



DESCRIPTION	SIZING RANGE	PRICE
<p>Men's Black Slim Leg Trousers – Slim fit with flat front style, 2 side pockets and 1 rear pocket. Trousers taper toward the ankle and are great for a contemporary look on a slim build.</p> <p>Branding: Harbour Hotels Tax Tab on the back right pocket</p> <p>Fabric: 54% Polyester, 44% Wool, 2% Lycra, 270gsm, machine washable</p>	<p>28" – 40" Waist</p> <p>Inside leg lengths available; Short 29.5" Regular 31.5" Long 33" & 36" unfinished</p>	£44



DESCRIPTION	SIZING RANGE	PRICE
<p>Men's Black Tailored Fit Trousers – Flat front trouser with 2 side pockets and 1 rear pocket. In a modern cut, not the slimmest in the range but still offers a contemporary look with more fabric around the thigh area for comfort.</p> <p>Branding: Harbour Hotels Tax Tab on the back right pocket</p> <p>Fabric: 54% Polyester, 44% Wool, 2% Lycra, 270gsm, machine washable</p>	<p>28" – 46" Waist</p> <p>Inside leg lengths available; Short 29.5" Regular 31.5" Long 33" & 36" unfinished</p>	£44

[Back to Index Page](#)



DESCRIPTION	SIZING RANGE	PRICE
<p>The Jetty Blue Waist Apron – Wide waist apron, extra hard wearing with anti-tangle ties that won't tangle when washed. Centre pocket which is customised to make 2 front pockets for ease. Can be washed on an industrial wash at 65c.</p> <p>Branding: Embroidered Jetty logo on front side of apron and Harbour Hotels tax tab on the reverse waistband</p> <p>Fabric: 65% Polyester, 35% Cotton, 245gsm</p>	One Size – 91cm wide x 61cm long	£17

DESCRIPTION	SIZING RANGE	PRICE

[Back to Index Page](#)



DESCRIPTION	SIZING RANGE	PRICE
<p>Women's White Contrast Shirt – High quality combed cotton, easy care shirt with contrasting blue fabric under collar, placket and bottom sleeve. In a modern fit with cutting seams at the back and sewn down over the bust to prevent gaping. This garment fits true to size.</p> <p>Branding: Garment is supplied plain</p> <p>Fabric: 100% Cotton</p>	XS – UK6 S – UK8 M – UK10/12 L – UK14 XL – UK16 2XL – UK18	£41



DESCRIPTION	SIZING RANGE	PRICE
<p>Women's Mid Blue Waistcoat – 4 button front with 2 welt pockets and cloth backing. In a longer line length for a clean silhouette and to eliminate any gap between the waistband of the trousers and the waistcoat.</p> <p>Branding: Embroidered 'H' logo in tone-on-tone thread on left chest when worn</p> <p>Fabric: 54% Polyester, 44% Wool, 2% Lycra</p>	UK6 – UK24 Long Length Only	£43

[Back to Index Page](#)



DESCRIPTION	SIZING RANGE	PRICE
<p>Women's Mid Blue Slim Jacket – Short, slim fit 2 button jacket with a slim notch lapel and cutaway front. Front breast darts and jetted pockets with a plain back and tailored back panels. 1 inside pocket. Similar to a high street blazer style jacket.</p> <p>Branding: Embroidered 'H' logo in tone-on-tone thread on left lapel when worn</p> <p>Fabric: 54% Polyester, 44% Wool, 2% Lycra</p>	UK6 – UK16 Petite UK4 – UK18 Regular UK6 – UK16 Long	£90



DESCRIPTION	SIZING RANGE	PRICE
<p>Women's Mid Blue Longline Jacket – Semi fitted, 2 button jacket with lapel and pocket contrast detail. Centre vent with tailored back panels and 1 inside pocket. The most traditional style jacket in the range.</p> <p>Branding: Embroidered 'H' logo in tone-on-tone thread on left lapel when worn</p> <p>Fabric: 54% Polyester, 44% Wool, 2% Lycra</p>	UK6 – UK16 Petite UK6 – UK24 Regular UK8 – UK18 Long	£90

[Back to Index Page](#)



DESCRIPTION	SIZING RANGE	PRICE
<p>Women's Mid Blue Shift Dress – Round neck shift dress with princess seam and short sleeves. Stretch lining with centre vent for a smart look.</p> <p>Branding: Embroidered 'H' logo in tone-on-tone thread on left chest when worn</p> <p>Fabric: 54% Polyester, 44% Wool, 2% Lycra</p>	UK6 – UK24 Regular UK8 – UK20 Long	£72



DESCRIPTION	SIZING RANGE	PRICE
<p>Women's Navy Slim Leg Trouser – Slimmest style in the range with 2 side pockets, mock hip pockets and belt loops.</p> <p>Branding: Harbour Hotels tax tab on the back right waistband</p> <p>Fabric: 54% Polyester, 44% Wool, 2% Lycra, 270gsm, machine washable</p>	UK4 – UK24 Inside leg lengths available; Short 27" Regular 29" Long 31" X Long 33" & 36" unfinished	£44

[Back to Index Page](#)



DESCRIPTION	SIZING RANGE	PRICE
<p>Women's Mid Blue Tapered Leg Trousers – Contemporary cut for a slimmer look that tapers to the ankle. 2 side pockets, mock rear pockets, front hook fastening and half lined. True to size and great worn as 7/8 length.</p> <p>Branding: Harbour Hotels tax tab on back right pocket</p> <p>Fabric: 54% Polyester, 44% Wool, 2% Lycra, 270gsm, machine washable</p>	<p>UK4 – UK24</p> <p>Inside leg lengths available: Short 27" Regular 29" Long 31" X Long 33" & 36" unfinished</p>	£44



DESCRIPTION	SIZING RANGE	PRICE
<p>Women's Mid Blue Straight Skirt – Straight style with centre vent, shaped back panels and full stretch lining. Sits on the natural waist, simple yet classic style and fits true to size.</p> <p>Branding: Harbour Hotels Tax Tab on the back right waistband</p> <p>Fabric: 54% Polyester, 44% Wool, 2% Lycra, 270gsm, machine washable</p>	<p>UK4 – UK24 Regular 22"</p> <p>UK8 – UK24 Long 25"</p> <p>UK8 – UK24 X Long 27"</p>	£36

[Back to Index Page](#)



DESCRIPTION	SIZING RANGE	PRICE
<p>Men's White Contrast Shirt – High quality combed cotton, easy care shirt with contrasting blue fabric under collar, placket and bottom sleeve. In a modern contemporary fit with cutting seams at the back. This garment fits true to size.</p> <p>Branding: Garment is supplied plain</p> <p>Fabric: 100% Cotton</p>	<p>S – 36" M – 38" L – 40" XL – 42" 2XL – 44" 3XL – 46" chest</p>	£38.75



DESCRIPTION	SIZING RANGE	PRICE
<p>Men's Mid Blue Waistcoat – 5 button front waistcoat with 2 welt pockets. Cloth backed in mid blue and available in regular length only.</p> <p>Branding: Embroidered 'H' logo in tone-on-tone thread on left chest when worn</p> <p>Fabric: 54% Polyester, 44% Wool, 2% Lycra, 270gsm, machine washable</p>	<p>34" – 50" chest Regular</p>	£43

[Back to Index Page](#)



DESCRIPTION	SIZING RANGE	PRICE
<p>Men's Mid Blue Slim Fit Jacket – Single breasted, 2 button slim fit jacket. Slim lapels with saddle stitching, ticket pocket and slim pocket jets. This jacket is most similar to a high street contemporary jacket. Available in 3 lengths.</p> <p>Branding: Embroidered 'H' logo in tone-on-tone thread on left lapel when worn</p> <p>Fabric: 54% Polyester, 44% Wool, 2% Lycra, 270gsm, machine washable</p>	34" – 44" Short 34" – 46" Regular 34" – 44" Long	£99



DESCRIPTION	SIZING RANGE	PRICE
<p>Men's Mid Blue Tailored Fit Jacket – Single breasted, 2 button tailored jacket. 3 inside pockets, mobile phone pocket and side vents. A little longer in length for a flattering look. Available in 3 lengths.</p> <p>Branding: Embroidered 'H' logo in tone-on-tone thread on left lapel when worn</p> <p>Fabric: 54% Polyester, 44% Wool, 2% Lycra, 270gsm, machine washable</p>	36" – 48" Short 34" – 56" Regular 38" – 48" Long	£99

[Back to Index Page](#)



DESCRIPTION	SIZING RANGE	PRICE
<p>Men's Mid Blue Slim Leg Trousers – Slim fit with flat front style, 2 side pockets and 1 rear pocket. Trousers taper toward the ankle and are great for a contemporary look on a slim build.</p> <p>Branding: Harbour Hotels Tax Tab on the back right pocket</p> <p>Fabric: 54% Polyester, 44% Wool, 2% Lycra, 270gsm, machine washable</p>	<p>28" – 40" Waist</p> <p>Inside leg lengths available: Short 29.5" Regular 31.5" Long 33" & 36" unfinished</p>	£44



DESCRIPTION	SIZING RANGE	PRICE
<p>Men's Mid Blue Tailored Fit Trousers – Flat front trouser with 2 side pockets and 1 rear pocket. In a modern cut, not the slimmest in the range but still offers a contemporary look with more fabric around the thigh area for comfort.</p> <p>Branding: Harbour Hotels Tax Tab on the back right pocket</p> <p>Fabric: 54% Polyester, 44% Wool, 2% Lycra, 270gsm, machine washable</p>	<p>28" – 46" Waist</p> <p>Inside Leg lengths available: Short 29.5" Regular 31.5" Long 33" & 36" unfinished</p>	£44

[Back to Index Page](#)

Bar Teams

Floor Team Pg 38 – 45
Managers Pg 46 - 52



HARBOUR
HOTELS



DESCRIPTION	SIZING RANGE	PRICE
<p>Women's Silver Contrast Oxford Shirt – UPDATED 2022 Style – tailored fit shirt with cutaway collar and contrast white fabric on inside collar and cuffs. Shirt is sewn down over the bust to prevent gaping.</p> <p>Branding: Garment is supplied plain</p> <p>Fabric: 85% Cotton, 15% Polyester, 125gsm</p>	UK6 - UK24	£25.50



DESCRIPTION	SIZING RANGE	PRICE
<p>Women's Black Slim Leg Trousers – Slim leg trouser with flat front design, side pockets and mock hip pockets. The slimmest style in the range for a contemporary look.</p> <p>Branding: Harbour Hotels tax tab on back right waistband</p> <p>Fabric: 64% Polyester, 34% Viscose, 2% Elastane</p>	UK4 – UK24 Leg lengths available: Short 27" Regular 29" Long 31" XL 33" & 36" unfinished	£35

[Back to Index Page](#)



DESCRIPTION	SIZING RANGE	PRICE
<p>Women's Black Tapered Leg Trouser – Contemporary cut for a slimmer look that tapers to the ankle. 2 side pockets, mock rear pockets, front hook fastening and half lined. True to size and great worn as 7/8 length.</p> <p>Branding: Harbour Hotels Tax Tab on the back right pocket</p> <p>Fabric: 54% Polyester, 44% Wool, 2% Lycra, 270gsm, machine washable</p>	<p>UK4 – UK24</p> <p>Inside leg lengths available: Short 27" Regular 29" Long 31" X Long 33" & 36" unfinished</p>	£44



DESCRIPTION	SIZING RANGE	PRICE
<p>Women's Black Straight Leg Trouser – Single button front fastening with a key card pocket and comfortable waistband, great style if you want comfort around your tummy. Fit is true to size.</p> <p>Branding: Harbour Hotels Tax Tab on back waistband</p> <p>Fabric: 54% Polyester, 44% Wool, 2% Lycra, 270gsm, machine washable</p>	<p>UK6 – UK24</p> <p>Inside leg lengths available; Short 27" Regular 29" Long 31" X Long 33" & 36" unfinished</p>	£44

[Back to Index Page](#)



DESCRIPTION	SIZING RANGE	PRICE
<p>Wax Look Brown Half Bistro Apron – Made with 100% cotton denim and a waxed finish for a unique 'wet' look effect. A tapered shape with double front pockets and plenty of storage space for notepads & change. Complementing brown fabric ties.</p> <p>Branding: Harbour Hotels Tax Tab on top left of pocket</p> <p>Fabric: 100% Cotton Denim, 10.8oz</p>	One Size – 44cm wide x 78cm long	£26.25



DESCRIPTION	SIZING RANGE	PRICE
<p>Unisex Brown Braces – Dark brown Y Style trouser braces with comfortable 35mm straps. Fully adjustable end clips and with leather crossover for a contemporary look.</p> <p>Branding: Garment is supplied plain</p>	One Size – Normally fits to 4XL	£20

[Back to Index Page](#)



DESCRIPTION	SIZING RANGE	PRICE
<p>Chrome Arm Cuffs – Set of 2 ribbed arm cuffs in a stretch style to slip over the grey shirt for a smart finish and to keep your shirt sleeves from getting stained whilst working. To be worn at the top part of the arm in the same position you'd wear armbands, 'spare' fabric can be rolled over the top to shorten the sleeves.</p> <p>Branding: Garment is supplied plain</p>	One Size – Diameter: 24cm	£12

DESCRIPTION	SIZING RANGE	PRICE
-------------	--------------	-------

[Back to Index Page](#)



DESCRIPTION	SIZING RANGE	PRICE
<p>Men's Silver Contrast Oxford Shirt – Fused, stand up collar with contrast charcoal coloured inner collar and cuff. Tailored fit for a contemporary look, back yoke and rounded hem.</p> <p>Branding: Garment is supplied plain</p> <p>Fabric: 85% Cotton, 15% Polyester, 125gsm</p>	<p>S – 36/38" M – 40" L – 42" XL – 44" 2XL – 46/48" chest</p>	£23.25



DESCRIPTION	SIZING RANGE	PRICE
<p>Men's Black Super Slim Trousers – Flat front, slim fit trouser which is the slimmest in the range and as close to a high street skinnier style. Great for a contemporary yet smart look.</p> <p>Branding: Harbour Hotels tax tab on back right pocket</p> <p>Fabric: 64% Polyester, 34% Viscose, 2% Elastane</p>	<p>28" – 40" waist</p> <p>Inside leg lengths Available; Short 29.5" Regular 31.5" Long 33" & 36" unfinished</p>	£35

[Back to Index Page](#)



DESCRIPTION	SIZING RANGE	PRICE
<p>Men's Black Slim Leg Trousers – Slim fit with flat front style, 2 side pockets and 1 rear pocket. Trousers taper toward the ankle and are great for a contemporary look on a slim build.</p> <p>Branding: Harbour Hotels Tax Tab on the back right pocket</p> <p>Fabric: 54% Polyester, 44% Wool, 2% Lycra, 270gsm, machine washable</p>	<p>28" – 40" Waist</p> <p>Inside leg lengths Available; Short 29.5" Regular 31.5" Long 33" & 36" unfinished</p>	£44



DESCRIPTION	SIZING RANGE	PRICE
<p>Men's Black Tailored Fit Trousers – Flat front trouser with 2 side pockets and 1 rear pocket. In a modern cut, not the slimmest in the range but still offers a contemporary look with more fabric around the thigh area for comfort.</p> <p>Branding: Harbour Hotels Tax Tab on the back right pocket</p> <p>Fabric: 54% Polyester, 44% Wool, 2% Lycra, 270gsm, machine washable</p>	<p>28" – 46" Waist</p> <p>Inside Leg lengths Available; Short 29.5" Regular 31.5" Long 33" & 36" unfinished</p>	£44

[Back to Index Page](#)



DESCRIPTION	SIZING RANGE	PRICE
<p>Wax Look Brown Half Bistro Apron – Made with 100% cotton denim and a waxed finish for a unique 'wet' look effect. A tapered shape with double front pockets and plenty of storage space for notepads & change. Complementary brown fabric ties.</p> <p>Branding: Harbour Hotels Tax Tab on top left of pocket</p> <p>Fabric: 100% Cotton Denim, 10.8oz</p>	One Size – 44cm wide x 78cm long	£26.25



DESCRIPTION	SIZING RANGE	PRICE
<p>Unisex Brown Braces – Dark brown Y Style trouser braces with comfortable 35mm straps and fully adjustable end clips and with leather crossover for a contemporary look.</p> <p>Branding: Garment is supplied plain</p>	One Size – Normally fits to 4XL	£20

[Back to Index Page](#)



DESCRIPTION	SIZING RANGE	PRICE
<p>Chrome Arm Cuffs – Set of 2 ribbed style arm cuffs in a stretch style to slip over the grey shirt for a smart finish and to keep your shirt sleeves from getting stained whilst working. To be worn at the top part of the arm in the same position you'd wear armbands, 'spare' fabric can be rolled over the top to shorten the sleeves.</p> <p>Branding: Garment is supplied plain</p>	One Size – Diameter: 24cm	£12

DESCRIPTION	SIZING RANGE	PRICE

[Back to Index Page](#)



DESCRIPTION	SIZING RANGE	PRICE
<p>Women's White Contrast Roll Sleeve Shirt – Roll up sleeve shirt featuring tab fasteners, inner cuffs and inner collar stand in contrasting grey. This garment is sewn down over the bust to prevent gaping.</p> <p>Branding: Garment supplied plain</p> <p>Fabric: 65% Polyester, 35% Cotton, 100gsm</p>	<p>XS – UK6 S – UK8/10 M – UK12/14 L – UK16/18 XL – UK20/22 2XL – UK24/28 3XL – UK28/30</p>	£31



DESCRIPTION	SIZING RANGE	PRICE
<p>Women's Light Grey Waistcoat – 4 button front with 2 welt pockets and cloth backing. In a longer line length for a clean silhouette and to eliminate any gap between the waistband of the trousers and the waistcoat.</p> <p>Branding: Embroidered 'H' logo in tone-on-tone thread on left chest when worn</p> <p>Fabric: 54% Polyester, 44% Wool, 2% Lycra</p>	<p>UK6 – UK24 Long only</p>	£43

[Back to Index Page](#)



DESCRIPTION	SIZING RANGE	PRICE
<p>Women's Light Grey Slim Jacket – Short, slim fit 2 button jacket with a slim notch lapel and cutaway front. Front breast darts and jetted pockets with a plain back and tailored back panels. 1 inside pocket. Similar to a high street blazer style jacket.</p> <p>Branding: Embroidered 'H' logo in tone-on-tone thread on left lapel when worn</p> <p>Fabric: 54% Polyester, 44% Wool, 2% Lycra</p>	UK6 – UK16 Petite UK4 – UK18 Regular UK6 – UK16 Long	£90



DESCRIPTION	SIZING RANGE	PRICE
<p>Women's Light Grey Longline Jacket – Semi fitted, 2 button jacket with lapel and pocket contrast detail. Centre vent with tailored back panels and 1 inside pocket. The most traditional style suit jacket in the range.</p> <p>Branding: Embroidered 'H' logo in tone-on-tone thread on left lapel when worn</p> <p>Fabric: 54% Polyester, 44% Wool, 2% Lycra</p>	UK6 – UK16 Petite UK6 – UK24 Regular UK8– UK18 Long	£90

[Back to Index Page](#)



DESCRIPTION	SIZING RANGE	PRICE
<p>Women's Light Grey 3 Button Jacket – Rounded lapel jacket with 3 button detail and 1 inside pocket and no vent. Branding: Harbour Hotels tax tab Fabric: 54% Polyester, 44% Wool, 2% Lycra</p>	UK6 – UK16 Petite UK6 – UK24 Reg UK8 – UK18 Long	£82



DESCRIPTION	SIZING RANGE	PRICE
<p>Women's Light Grey Shift Dress – Round neck shift dress with princess seam and short sleeves. Stretch lining with centre vent for a smart look. Branding: Harbour Hotels Tax Tab Fabric: 54% Polyester, 44% Wool, 2% Lycra</p>	UK6 – UK24 Regular UK8 – UK20 Long	£72

[Back to Index Page](#)



DESCRIPTION	SIZING RANGE	PRICE
<p>Women's Light Grey Tapered Leg Trousers – Contemporary cut for a slimmer look that tapers to the ankle. 2 side pockets, mock rear pockets, front hook fastening and half lined. True to size and great worn as 7/8 length.</p> <p>Branding: Harbour Hotels tax tab on back right pocket</p> <p>Fabric: 54% Polyester, 44% Wool, 2% Lycra, 270gsm, machine washable</p>	<p>UK4 – UK24</p> <p>Inside leg lengths available: Short 27" Regular 29" Long 31" X Long 33" & 36" unfinished</p>	£44



DESCRIPTION	SIZING RANGE	PRICE
<p>Women's Light Grey Straight Skirt – Straight style with centre vent, shaped back panels and full stretch lining. Sits on the natural waist, simple yet classic style and fits true to size.</p> <p>Branding: Harbour Hotels Tax Tab</p> <p>Fabric: 54% Polyester, 44% Wool, 2% Lycra, 270gsm, machine washable</p>	<p>UK4 – UK24 Regular 22"</p> <p>UK8 – UK24 Long 25"</p> <p>UK8 – UK24 X Long 27"</p>	£36

[Back to Index Page](#)



DESCRIPTION	SIZING RANGE	PRICE
<p>Men's White Contrast Oxford Shirt – Fused, stand up button down collar with contrast inner placket, collar and cuff in charcoal. Contrast binding down centre placket, back yoke and rounded hem. Supplied with 2 spare buttons.</p> <p>Branding: Garment is supplied plain</p> <p>Fabric: 85% Cotton, 15% Polyester, 125gsm</p>	<p>S – 36/38" M – 40" L – 42" XL – 44" 2XL – 46/48" chest</p>	£23.50



DESCRIPTION	SIZING RANGE	PRICE
<p>Men's Light Grey Waistcoat – 5 button front waistcoat with 2 welt pockets. Cloth backed in light grey and available in regular length only.</p> <p>Branding: Embroidered 'H' logo in tone-on-tone thread on left chest when worn</p> <p>Fabric: 54% Polyester, 44% Wool, 2% Lycra, 270gsm, machine washable</p>	<p>34" – 50" chest Regular</p>	£43

[Back to Index Page](#)



DESCRIPTION	SIZING RANGE	PRICE
<p>Men's Light Grey Slim Fit Jacket – Single breasted, 2 button slim fit jacket. Slim lapels with saddle stitching, ticket pocket and slim pocket jets. Similar to a high street contemporary style jacket. Available in 3 lengths.</p> <p>Branding: Embroidered 'H' logo in tone-on-tone thread on left lapel when worn</p> <p>Fabric: 54% Polyester, 44% Wool, 2% Lycra, 270gsm, machine washable</p>	34" – 44" Short 34" – 46" Regular 34" – 44" Long	£99



DESCRIPTION	SIZING RANGE	PRICE
<p>Men's Light Grey Tailored Fit Jacket – Single breasted, 2 button tailored jacket. 3 inside pockets, mobile phone pocket and side vents. A little longer in length for a flattering look. Available in 3 lengths.</p> <p>Branding: Embroidered 'H' logo in tone-on-tone thread on left lapel when worn</p> <p>Fabric: 54% Polyester, 44% Wool, 2% Lycra, 270gsm, machine washable</p>	36" – 48" Short 34" – 56" Regular 38" – 48" Long	£99

[Back to Index Page](#)



DESCRIPTION	SIZING RANGE	PRICE
<p>Men's Light Grey Slim Leg Trouser – Slim fit with flat front style, 2 side pockets and 1 rear pocket. Trousers taper toward the ankle and are great for a contemporary look on a slimmer build.</p> <p>Branding: Harbour Hotels tax tab on the back right pocket</p> <p>Fabric: 54% Polyester, 44% Wool, 2% Lycra, 270gsm, machine washable</p>	<p>28" – 40" Waist</p> <p>Inside leg lengths Available; Short 29.5" Regular 31.5" Long 33" & 36" unfinished</p>	£44



DESCRIPTION	SIZING RANGE	PRICE
<p>Men's Light Grey Tailored Fit Trouser – Flat front trouser with 2 side pockets and 1 rear pocket. In a modern cut, not the slimmest in the range but still offers a contemporary look with more fabric around the thigh area for comfort.</p> <p>Branding: Harbour Hotels tax tab on the back right pocket</p> <p>Fabric: 54% Polyester, 44% Wool, 2% Lycra, 270gsm, machine washable</p>	<p>28" – 46" Waist</p> <p>Inside Leg lengths Available; Short 29.5" Regular 31.5" Long 33" & 36" unfinished</p>	£44

[Back to Index Page](#)

Housekeeping
Room Attendants/Porter Pages 54 - 58
Manager Pages 59 - 68



HARBOUR

HOTELS



DESCRIPTION	SIZING RANGE	PRICE
<p>*New 2021 Look* Women's Heather Black Linen Tunic – Soft linen fabric with V-neck detail and front and back princess seams. Side vents for ease of movement. Two contrast yarns give it an overall heather effect, looks more like a textured charcoal. Concealed zip back and handy open side pockets.</p> <p>Branding: Embroidered Housekeeping logo on front breast</p> <p>Fabric: 100% Polyester, 160gsm</p>	XS UK8 S – UK10 M – UK12 L – UK14 XL – UK16 2XL – UK18 3XL – UK20 4XL – UK22 5XL – UK24	£29



DESCRIPTION	SIZING RANGE	PRICE
<p>*New 2021 Look* Women's Heather Black Linen Trouser – Deep waistband trouser for extra comfort with front fastening zip. Cross over waistband with 2 button fastening. Straight leg style for a flowy and comfortable look.</p> <p>Branding: Embroidered Housekeeping logo on reverse waistband</p> <p>Fabric: 100% Polyester Plain weave, 185gsm</p>	XS – UK8 S – UK10 M – UK12 L – UK14 XL – UK16 2XL – UK18 3XL – UK20 4XL – UK22 5XL – UK24 Reg 31" leg	£26



DESCRIPTION	SIZING RANGE	PRICE
<p>*New 2021 Look* Women's Black Cool Fabric Leggings – Cool fit fabric for comfort whilst on the move! Elasticated smooth waistband, hidden inner front key pocket and elastane content for extra stretch and comfort.</p> <p>Branding: Embroidered Housekeeping logo onto reverse waistband</p> <p>Fabric: 87% Polyester, 13% Elastane, 280gsm</p>	XS – UK8 S – UK10 M – UK12 L – UK14 XL – UK16 2XL – UK18 3XL – UK20	£21

DESCRIPTION	SIZING RANGE	PRICE



DESCRIPTION	SIZING RANGE	PRICE
<p>*Previous Look* Women's Contrast Cobalt Tunic – Semi fitted black tunic featuring a contrast cobalt lapel with a glitter button detail. Princess panel styling for a flattering look with a centre back zip and capped sleeves. Side pockets, double action back and side splits.</p> <p>Branding: Housekeeping embroidery in cobalt on front left breast as shown</p> <p>Fabric: 100% Polyester</p>	UK6 – UK26	£32

DESCRIPTION	SIZING RANGE	PRICE
<p>*Previous Look* Women's Black Slim Leg Trousers – Flat front cigarette trouser with a flattering drop waist which works great teamed with the tunic. Front zip fastening with side pockets. Two way stretch.</p> <p>Branding: Garment supplied plain</p> <p>Fabric: 100% Polyester</p>	UK6 – UK26	£23.50

[Back to Index Page](#)



DESCRIPTION	SIZING RANGE	PRICE
<p>Men's Cobalt Cool Polo – Fitted polo with panelling detail and stylish knit collar and 3 button placket. Wicking fabric to help draw moisture away from the body in hot conditions, quick drying to keep the wearer cool. Excellent colour retention.</p> <p>Branding: Housekeeping embroidery in black on front left chest</p> <p>Fabric: 100% Polyester Pique, 155gsm</p>	<p>S – 35" M – 37" L – 39" XL – 41" 2XL – 44" 3XL – 46" 4XL – 48" chest</p>	£13.75



DESCRIPTION	SIZING RANGE	PRICE
<p>Men's Black Super Slim Trousers – Flat front, slim fit trouser which is the slimmest in the range and as close to a high street skinnier style. Great for a contemporary yet smart look.</p> <p>Branding: Harbour Hotels tax tab on back right pocket</p> <p>Fabric: 64% Polyester, 34% Viscose, 2% Elastane</p>	<p>28" – 40" waist</p> <p>Inside leg lengths Available; Short 29.5" Regular 31.5" Long 33" & 36" unfinished</p>	£35

[Back to Index Page](#)



DESCRIPTION	SIZING RANGE	PRICE
<p>Men's Black Slim Leg Trousers – Slim fit with flat front style, 2 side pockets and 1 rear pocket. Trousers taper toward the ankle and are great for a contemporary look on a slim build.</p> <p>Branding: Harbour Hotels Tax Tab on the back right pocket</p> <p>Fabric: 54% Polyester, 44% Wool, 2% Lycra, 270gsm, machine washable</p>	<p>28" – 40" Waist</p> <p>Inside leg lengths available; Short 29.5" Regular 31.5" Long 33" & 36" unfinished</p>	£44



DESCRIPTION	SIZING RANGE	PRICE
<p>Men's Black Tailored Fit Trousers – Flat front trouser with 2 side pockets and 1 rear pocket. In a modern cut, not the slimmest in the range but still offers a contemporary look with more fabric around the thigh area for comfort.</p> <p>Branding: Harbour Hotels Tax Tab on the back right pocket</p> <p>Fabric: 54% Polyester, 44% Wool, 2% Lycra, 270gsm, machine washable</p>	<p>28" – 46" Waist</p> <p>Inside Leg lengths available; Short 29.5" Regular 31.5" Long 33" & 36" unfinished</p>	£44

[Back to Index Page](#)



DESCRIPTION	SIZING RANGE	PRICE
<p>Women's Cream Long Sleeve Blouse – Crepe de chine, round neck blouse with front pleat detail, bust darts and single gold button cuff. Rear gold zip detail. Lightweight and cool fabric which drapes over the body shape for a flattering look. Supplied with a nude camisole.</p> <p>Branding: Garment supplied plain</p> <p>Fabric: 94% Polyester, 6% Elastane</p>	UK6 – UK30	£29.50



DESCRIPTION	SIZING RANGE	PRICE
<p>Women's Cream Short Sleeve Blouse – Crepe de chine, round neck short sleeve blouse with front pleat detail, bust darts and rear gold zip detail. Lightweight and cool fabric which drapes over the body shape for a flattering look. Supplied with a nude camisole.</p> <p>Branding: Garment supplied plain</p> <p>Fabric: 94% Polyester, 6% Elastane</p>	UK6 – UK30	£29.50

[Back to Index Page](#)



DESCRIPTION	SIZING RANGE	PRICE
<p>Women's Black Slim Jacket – Short, slim fit 2 button jacket with a slim notch lapel and cutaway front. Front breast darts and jetted pockets with a plain back and tailored back panels. 1 inside pocket. Similar to a high street blazer style jacket.</p> <p>Branding: Embroidered 'H' logo in tone-on-tone thread on left lapel when worn</p> <p>Fabric: 54% Polyester, 44% Wool, 2% Lycra</p>	UK6 – UK16 Petite UK4 – UK18 Regular UK6 – UK16 Long	£90



DESCRIPTION	SIZING RANGE	PRICE
<p>Women's Black Longline Jacket – Semi fitted, 2 button jacket with lapel and pocket contrast detail. Centre vent with tailored back panels and 1 inside pocket. The most traditional style jacket in the range.</p> <p>Branding: Embroidered 'H' logo in tone-on-tone thread on left lapel when worn</p> <p>Fabric: 54% Polyester, 44% Wool, 2% Lycra</p>	UK6 – UK16 Petite UK6 – UK24 Regular UK8– UK18 Long	£90

[Back to Index Page](#)



DESCRIPTION	SIZING RANGE	PRICE
<p>Women's Black Box Style Jacket – 3 button tailored, contemporary fit jacket with peaked lapels and tailored back panels. Centre vent and 1 inside pocket.</p> <p>Branding: Embroidered 'H' logo in tone-on-tone thread on left lapel when worn</p> <p>Fabric: 65% Polyester, 35% Wool</p>	<p>UK6 – UK16 Petite UK6 – UK24 Regular UK8 – UK18 Long</p>	£82



DESCRIPTION	SIZING RANGE	PRICE
<p>Women's Black Slim Leg Trouser – Slim leg trouser with flat front design, side pockets and mock hip pockets. The slimmest style in the range for a contemporary look.</p> <p>Branding: Harbour Hotels tax tab on back right waistband</p> <p>Fabric: 64% Polyester, 34% Viscose, 2% Elastane</p>	<p>UK4 – UK24</p> <p>Leg lengths available: Short 27" Regular 29" Long 31" XL 33" & 36" unfinished</p>	£35

[Back to Index Page](#)



DESCRIPTION	SIZING RANGE	PRICE
<p>Women's Black Tapered Leg Trousers – Contemporary cut for a slimmer look that tapers to the ankle. 2 side pockets, mock rear pockets, front hook fastening and half lined. True to size and great worn as 7/8 length.</p> <p>Branding: Harbour Hotels tax tab on the back right pocket</p> <p>Fabric: 54% Polyester, 44% Wool, 2% Lycra, 270gsm, machine washable</p>	<p>UK4 – UK24</p> <p>Inside leg lengths available: Short 27" Regular 29" Long 31" X Long 33" & 36" unfinished</p>	£44



DESCRIPTION	SIZING RANGE	PRICE
<p>Women's Black Straight Leg Trousers – Single button front fastening with a comfort waistband, great style if you want comfort around your tummy. Key card pocket and fit is true to size.</p> <p>Branding: Harbour Hotels tax tab on back waistband</p> <p>Fabric: 54% Polyester, 44% Wool, 2% Lycra, 270gsm, machine washable</p>	<p>UK6 – UK24</p> <p>Inside leg lengths available; Short 27" Regular 29" Long 31" X Long 33" & 36" unfinished</p>	£44

[Back to Index Page](#)



DESCRIPTION	SIZING RANGE	PRICE
<p>Women's Black Straight Skirt – Straight style with centre vent, shaped back panels and full stretch lining. Simple yet classic style and fits true to size.</p> <p>Branding: Harbour Hotels tax tab on the back right waistband</p> <p>Fabric: 54% Polyester, 44% Wool, 2% Lycra, 270gsm, machine washable</p>	<p>UK6 – UK24 Regular (22)</p> <p>UK8 – UK24 Long (25")</p> <p>UK8 - UK24 X Long (27")</p>	£36



DESCRIPTION	SIZING RANGE	PRICE
<p>Women's Black A-Line Skirt – Flared skirt with front seam and kick pleat detail. Narrow waistband that sits high on the waist, fob pocket and full stretch lining. Super comfortable to wear and true to size.</p> <p>Branding: Harbour Hotels tax tab on the back right pocket</p> <p>Fabric: 54% Polyester, 44% Wool, 2% Lycra, 270gsm, machine washable</p>	<p>UK6 – UK24</p> <p>Available in regular length only 22"</p>	£39

[Back to Index Page](#)



DESCRIPTION	SIZING RANGE	PRICE
<p>Women's Black Shift Dress – Round neck shift dress with princess seam and short sleeves. Stretch lining with centre vent for a smart look.</p> <p>Branding: Embroidered 'H' logo in tone-on-tone thread on left chest when worn</p> <p>Fabric: 54% Polyester, 44% Wool, 2% Lycra</p>	UK6 – UK24 Regular UK8 – UK20 Long	£72



DESCRIPTION	SIZING RANGE	PRICE
<p>Women's Black V-Neck Dress – Tailored V-neck dress with short sleeves and vent detail. Full stretch lining with bust darts and centre vent. Slimmer fitting than the 'shift' dress.</p> <p>Branding: Embroidered 'H' logo in tone-on-tone thread on left chest when worn</p> <p>Fabric: 65% Polyester, 35% Wool</p>	UK6 – UK24 Regular UK8 – UK20 Long	£72

[Back to Index Page](#)



DESCRIPTION	SIZING RANGE	PRICE
<p>Men's White Stretch Shirt – 2 button cut-away collar and cross stitched mother of pearl effect buttons. 2 button adjustable angular cuffs. Short modern back yoke and darts at back panel, in a comfortable stretch poplin fabric.</p> <p>Branding: Garment supplied plain</p> <p>Fabric: 97% Combed Cotton, 3% Elastane, 135gsm</p>	<p>S – 14.5/15" M – 15.5" L – 16/16.5" XL – 17/17.5" 2XL – 18" 3XL – 18.5/19" 4XL – 19.5" Collar</p>	£18



DESCRIPTION	SIZING RANGE	PRICE
<p>Men's Black Waistcoat – 5 button front waistcoat with 2 welt pockets. Cloth backed and available in regular length only.</p> <p>Branding: Embroidered 'H' logo in tone-on-tone thread on left chest when worn</p> <p>Fabric: 54% Polyester, 44% Wool, 2% Lycra, 270gsm, machine washable</p>	34" – 56" Chest	£43

[Back to Index Page](#)



DESCRIPTION	SIZING RANGE	PRICE
<p>Men's Black Slim Fit Jacket – Single breasted, 2 button slim fit jacket. Slim lapels with saddle stitching, ticket pocket and slim pocket jets. Similar to a high street contemporary style jacket. Available in 3 lengths.</p> <p>Branding: Embroidered 'H' logo in tone-on-tone thread on left lapel when worn</p> <p>Fabric: 54% Polyester, 44% Wool, 2% Lycra, 270gsm, machine washable</p>	34" – 44" Short 34" – 46" Regular 34" – 44" Long	£99



DESCRIPTION	SIZING RANGE	PRICE
<p>Men's Black Tailored Fit Jacket – Single breasted, 2 button tailored jacket. 3 inside pockets, mobile phone pocket and side vents. A little longer in length for a flattering look. Available in 3 lengths.</p> <p>Branding: Embroidered 'H' logo in tone-on-tone thread on left lapel when worn</p> <p>Fabric: 54% Polyester, 44% Wool, 2% Lycra, 270gsm, machine washable</p>	36" – 48" Short 34" – 56" Regular 38" – 48" Long	£99

[Back to Index Page](#)



DESCRIPTION	SIZING RANGE	PRICE
<p>Men's Black Super Slim Trousers – Flat front, slim fit trouser which is the slimmest in the range and as close to a high street skinnier style. Great for a contemporary yet smart look.</p> <p>Branding: Harbour Hotels tax tab on the back right pocket</p> <p>Fabric: 64% Polyester, 34% Viscose, 2% Elastane</p>	<p>28" – 40" waist</p> <p>Inside leg lengths Available; Short 29.5" Regular 31.5" Long 33" & 36" unfinished</p>	£35



DESCRIPTION	SIZING RANGE	PRICE
<p>Men's Black Slim Leg Trousers – Slim fit with flat front style, 2 side pockets and 1 rear pocket. Trousers taper toward the ankle and are great for a contemporary look on a slim build.</p> <p>Branding: Harbour Hotels tax tab on back right pocket</p> <p>Fabric: 54% Polyester, 44% Wool, 2% Lycra, 270gsm, machine washable</p>	<p>28" – 40" Waist</p> <p>Inside leg lengths available; Short 29.5" Regular 31.5" Long 33" & 36" unfinished</p>	£44

[Back to Index Page](#)



DESCRIPTION	SIZING RANGE	PRICE
<p>Men's Black Tailored Fit Trousers – Flat front trouser with 2 side pockets and 1 rear pocket. In a modern cut, not the slimmest in the range but still offers a contemporary look with more fabric around the thigh area for comfort.</p> <p>Branding: Harbour Hotels tax tab on the back right pocket</p> <p>Fabric: 54% Polyester, 44% Wool, 2% Lycra, 270gsm, machine washable</p>	<p>28" – 46" Waist</p> <p>Inside Leg lengths available; Short 29.5" Regular 31.5" Long 33" & 36" unfinished</p>	<p>£44</p>

DESCRIPTION	SIZING RANGE	PRICE

[Back to Index Page](#)

Maintenance Team

HARBOUR

HOTELS



DESCRIPTION	SIZING RANGE	PRICE
<p>Men's Recycled Navy/Cobalt Polo – 3 button placket polo with contrast details on sleeves, inside placket and end of collar. A green choice, made from 10 plastic bottles using Oeko-tex 100 certified cotton.</p> <p>Branding: Harbour Hotels embroidery on front breast and 'Maintenance' vinyl print on shoulder blades</p> <p>Fabric: 50% Organic Cotton, 50% Recycled Polyester, 200gsm</p>	S – 36" M – 38" L – 40" XL – 42" 2XL – 44" 3XL – 46/48" 4XL – 50/52" 5XL – 54/56" chest	£22.50/ £17.50 <i>*Manager's polos are without vinyl print on the reverse*</i>



DESCRIPTION	SIZING RANGE	PRICE
<p>Men's Recycled Navy/Cobalt Sweatshirt Jacket – full zip sweatshirt with contrast zipper & colour on shoulders and inner arm panels. Smooth finish for a smart appearance. A green choice made using 25 plastic bottles using Oeko-tex 100 certified cotton.</p> <p>Branding: Harbour Hotels embroidery on front left breast</p> <p>Fabric: 50% Organic Cotton, 50% Recycled Polyester, 280gsm</p>	S – 36" M – 38" L – 40" XL – 42" 2XL – 44" 3XL – 46/48" chest	£33.50

[Back to Index Page](#)



DESCRIPTION	SIZING RANGE	PRICE
<p>Men's Recycled Navy/Cobalt Polosweater – designed like a long sleeve polo but with fleece inner making it much thicker and warmer, great for layering! Contrast details on arms and inner/end placket. A green choice made from 25 plastic bottles using Oeko-tex 100 certified cotton.</p> <p>Branding: Harbour Hotels embroidery on front breast</p> <p>Fabric: 50% Organic Cotton, 50% Recycled Polyester, 280gsm</p>	<p>S – 36" M – 38" L – 40" XL – 42" 2XL – 44" 3XL – 46/48" chest</p>	<p>£30.50</p>



DESCRIPTION	SIZING RANGE	PRICE
<p>Men's Recycled Navy/Cobalt Softshell – contrast softshell jacket with contrast zippers and contrast colour on shoulder seams and inner arm panels. Detachable hood and adjustable sleeves with Velcro straps. A green choice made using 55 plastic bottles.</p> <p>Branding: Harbour Hotels embroidery on front breast</p> <p>Fabric: 100% Recycled Polyester, with bonded fleece, 280gsm</p>	<p>S – 38" M – 40" L – 42" XL – 44" 2XL – 46/48" 3XL – 50/52" 4XL – 54/56" 5XL – 62/64" chest</p>	<p>£46.50</p>

[Back to Index Page](#)



DESCRIPTION	SIZING RANGE	PRICE
<p>Men's Navy Windbreaker Jacket – Super lightweight fold-away jacket which folds back into itself. Full zip opening with concealed hood. Ideal for outside work in rain showers.</p> <p>Branding: Harbour Hotels embroidery on front breast</p> <p>Fabric: 100% Polyester, 70gsm</p>	<p>S – 34/36” M – 38” L – 40” XL – 42” 2XL – 44” 3XL – 44/46” chest</p>	£14



DESCRIPTION	SIZING RANGE	PRICE
<p>Men's Black Hardwearing Workwear Trousers – Updated style for 2021. Side and back pockets with flap and Velcro closure. Folding rule pocket and pocket for tools with knife button. 2 hammer loops. Reflective piping on the outside legs. Internal pockets for knee protectors.</p> <p>Branding: Garment is supplied plain</p> <p>Fabric: 65% Polyester, 35% Cotton Canvas, 245gsm</p>	<p>30" - 46" waist</p> <p>Available in Short Reg Long (exact measurements for each are dictated by waist size, increasing)</p>	£29

[Back to Index Page](#)



DESCRIPTION	SIZING RANGE	PRICE
<p>Men's Black Heavy Duty Trousers – stain resistant coated trousers which can be washed at 60c & tumble dried. Internal pockets for knee pads, cargo pockets on legs with multi compartments, 2 back pockets and tripled stitched pocket opening and in seams for additional strength.</p> <p>Branding: Garment is supplied plain</p> <p>Fabric: 65% Polyester, 35% Cotton, 260gsm</p>	28" – 48" waist Short: 30" Reg: 32" Long: 34" leg	£38



DESCRIPTION	SIZING RANGE	PRICE
<p>Men's Navy Heavyweight Beanie Hat – Woolly ski hat with special Thinsulate insulation. Scotch guard rainproof coated yarns and double thickness for warmth.</p> <p>Branding: Harbour Hotels embroidery on front rib</p> <p>Fabric: 100% Soft Feel Acrylic, 340gsm</p>	One size	£8

[Back to Index Page](#)



DESCRIPTION	SIZING RANGE	PRICE
<p>Navy Unisex Stud Front Coveralls – concealed stud front design with two chest pockets with flap closure and left sleeve pocket – handy for small items! Side elasticated waistband for ease of movement and two side opening pockets. Rear patch pocket and left leg ruler pocket & knee pad pockets. These are to be worn for 'messy' jobs to help protect the uniform underneath ☺</p> <p>Branding: Harbour Hotels embroidery on front breast Fabric: 65% Polyester, 35% Cotton, 245gsm</p>	<p>36" – 50" chest</p> <p>Reg – 31" Long – 33"</p>	£45.50



DESCRIPTION	SIZING RANGE	PRICE
<p>Knee Pads – EVA foam knee pads which slot easily into the workwear trousers for extra comfort whilst undertaking jobs. They measure 15mm in thickness, please remove knee pads from trousers for washing.</p> <p>Branding: Garment is supplied plain</p> <p>Fabric: 100% EVA, Ethylen Vinyl Acetat</p>	One size	£5.95

[Back to Index Page](#)

HarSpa

Therapists/Managers 76 - 81
Spa Attendants Pages 82 - 83
Juice Bar Team Pages 85 - 88
Gym PT Pages 89 - 95



HARBOUR
HOTELS



DESCRIPTION	SIZING RANGE	PRICE
<p>*New 2021 Look* Women's Navy Side Tie Tunic – Flattering design with V-neck faux wrap over detail with faux side tie. Pleat detail on sleeve and back zip fastening. Can be washed up to 60c.</p> <p>Branding: Embroidered HarSpa logo on front right breast when worn</p> <p>Fabric: 100% Soft Twill Polyester</p>	UK6 – UK32	£34.95



DESCRIPTION	SIZING RANGE	PRICE
<p>*New 2021 Look* Women's Navy Asymmetric Tunic – Eye catching asymmetric neckline detail with side vents and back zip fastening. Pleat detail on sleeves. Can be washed up to 60c.</p> <p>Branding: Embroidered HarSpa logo on front right breast when worn</p> <p>Fabric: 100% Soft Twill Polyester</p>	UK6 – UK32	£32.50

[Back to Index Page](#)



DESCRIPTION	SIZING RANGE	PRICE
<p>*New 2021 Look* Women's Navy Slim Spa Trousers – Super comfy with high waist and zip at front waistband. Slim leg style that finish at an ankle length for a more contemporary look. Can be washed up to 60c.</p> <p>Branding: Garment supplied plain</p> <p>Fabric: 100% Soft Twill Polyester</p>	<p>UK6 – UK24</p> <p>Available in Short 28" Reg 30"</p> <p>UK26 – UK32 available in unhemmed only</p>	£19.85



DESCRIPTION	SIZING RANGE	PRICE
<p>*New 2021 Look* Women's Navy Straight Leg Trousers – For a more 'flowy' traditional look these straight leg trousers have a high waist for comfort and side zip fastening. Can be washed up to 60c.</p> <p>Branding: Garment supplied plain</p> <p>Fabric: 100% Soft Twill Polyester</p>	<p>UK6 – UK24</p> <p>Available in Short 29" Reg 31"</p> <p>UK26 – UK32 available in unhemmed only</p>	£19.85

[Back to Index Page](#)



DESCRIPTION	SIZING RANGE	PRICE
<p>*New 2021 Look* Women's Navy Cropped Trousers – Slim leg design in a cropped finish, perfect for the warmer months and warm environments! High waist with front zip fastening and notch ankle detail. Can be washed up to 60c.</p> <p>Branding: Garment supplied plain</p> <p>Fabric: 100% Soft Twill Polyester</p>	UK6 – UK32	£19.85



DESCRIPTION	SIZING RANGE	PRICE
<p>*New 2021 Look* Women's Navy Peplum Dress – Super flattering design with angled neckline and peplum waist detail. Back zip fastening and comfortable sleeve length to help with ease of movement. Can be washed up to 60c.</p> <p>Branding: Embroidered HarSpa logo on front right breast when worn</p> <p>Fabric: 100% Soft Twill Polyester</p>	UK6 – UK32	£40

[Back to Index Page](#)



DESCRIPTION	SIZING RANGE	PRICE
<p>*New 2021 Look* Women's Navy Side Tie Dress – Complementing the side tie tunic, this gorgeous V-neck dress has a faux wrap detail which is visible along and round one side with faux side tie. Back zip fastening. Can be washed up to 60c.</p> <p>Branding: Embroidered HarSpa logo on front right breast when worn</p> <p>Fabric: 100% Soft Twill Polyester</p>	UK6 – UK32	£41



DESCRIPTION	SIZING RANGE	PRICE
<p>*New 2021 Look* Managers Navy Polka Dot Jacket – Collarless, contemporary jacket in a tailored fit with curved splits and curved front/back seams. 2 internal jet pockets. The fine polka dot texture matches with the new collection fabric.</p> <p>Branding: Embroidered HarSpa logo on front right breast when worn</p> <p>Fabric: 63% Polyester, 34% Viscose, 3% Elastane</p>	UK6 – UK16 Petite UK4 – UK24 Regular UK6 – UK16 Long	£71

[Back to Index Page](#)



DESCRIPTION	SIZING RANGE	PRICE
<p>Women's Black Round Neck Tee – Stretch t-shirt with enzyme wash for a super soft feel. Elastane content for improved fit and comfort. Modern, longline fit with soft, stretchy neckline.</p> <p>Branding: Embroidered Harbour Hotels 'H' logo on the right sleeve when worn</p> <p>Fabric: 95% Cotton, 5% Elastane, 170gsm</p>	<p>XS – UK8 S – UK10 M – UK12 L – UK14 XL – UK16 2XL – UK18</p>	<p>£10.25</p>



DESCRIPTION	SIZING RANGE	PRICE
<p>Bespoke HarSpa Face Mask – Made from 100% cotton fabric with elastic ties and in 'HarSpa' grey and aqua fabrics, making it fully reversible.</p> <p>Branding: HarSpa embroidered 'tiny' logo onto right side when worn</p> <p>Fabric: 100% Cotton</p>	<p>Medium or Large elastic ties</p>	<p>£12.50</p> <p>*contact us if you'd like to purchase 11+ as discounts are available</p>

[Back to Index Page](#)



DESCRIPTION	SIZING RANGE	PRICE
<p>*New 2021 Look* Men's Navy Tunic – Fitted style with turn up $\frac{3}{4}$ sleeve detail and grandad style collar. Full front button fastening. Pocket on left chest when worn. Easy care fabric can be washed up to 60c.</p> <p>Branding: Embroidered HarSpa logo on front right breast when worn</p> <p>Fabric: 100% Soft Twill Polyester</p>	<p>S – 41" M – 45" L – 49" XL – 52" chest</p>	£33.50



DESCRIPTION	SIZING RANGE	PRICE
<p>*New 2021 Look* Men's Navy Straight Trousers – Straight leg design with elasticated waistband and front button fastening. Easy care fabric can be washed up to 60c.</p> <p>Branding: Garment supplied plain</p> <p>Fabric: 100% Soft Twill Polyester</p>	<p>S – 28/30" M – 32/34" L – 36/38" XL – 40/42" 2XL – 44/46" waist</p>	£26.50



DESCRIPTION	SIZING RANGE	PRICE
<p>Women's Black Soft Touch Tunic – Easycare wrap tunic with a stylish mandarin collar and asymmetrical button fastening. Two concealed hip pockets and notched cuffs on sleeves and side vents. Side vents for ease of movement. Wash up to 40c.</p> <p>Branding: HarSpa logo embroidered on front right breast</p> <p>Fabric: 100% Soft Touch Polyester, 200gsm</p>	UK6 – UK28	£21.75

DESCRIPTION	SIZING RANGE	PRICE
<p>Women's Black Slim Leg Trouser – Slim leg design with a flattering fit. Flat front style with zip fly and button fastening. Wash up to 60c.</p> <p>Branding: Garment supplied plain</p> <p>Fabric: 100% Polyester, 200gsm</p>	UK6 – UK28 Inside leg lengths available: Short 29" Reg 31" Long 33" X Long 36"	£22.99

[Back to Index Page](#)



DESCRIPTION	SIZING RANGE	PRICE
<p>Men's Grey Cool Polo – Fitted polo with panelling detail and stylish knit collar and 3 button placket. Wicking fabric to help draw moisture away from the body in hot conditions, quick drying to keep the wearer cool. Excellent colour retention.</p> <p>Branding: HarSpa logo embroidered on front right breast</p> <p>Fabric: 100% Polyester Pique, 155gsm</p>	<p>S – 35" M – 37" L – 39" XL – 41" 2XL – 44" 3XL – 46" 4XL – 48" chest</p>	£14



DESCRIPTION	SIZING RANGE	PRICE
<p>Men's Black Super Slim Trousers – Flat front, slim fit trouser which is the slimmest in the range and as close to a high street skinnier style. Great for a contemporary yet smart look.</p> <p>Branding: Harbour Hotels tax tab on the back right pocket</p> <p>Fabric: 64% Polyester, 34% Viscose, 2% Elastane</p>	<p>28" – 40" waist</p> <p>Inside leg lengths Available; Short 29.5" Regular 31.5" Long 33" & 36" unfinished</p>	£35

[Back to Index Page](#)



DESCRIPTION	SIZING RANGE	PRICE
<p>Men's Black Slim Leg Trousers – Slim fit with flat front style, 2 side pockets and 1 rear pocket. Trousers taper toward the ankle and are great for a contemporary look on a slim build.</p> <p>Branding: Harbour Hotels Tax Tab on the back right pocket</p> <p>Fabric: 54% Polyester, 44% Wool, 2% Lycra, 270gsm, machine washable</p>	<p>28" – 40" Waist</p> <p>Inside leg lengths available; Short 29.5" Regular 31.5" Long 33" & 36" unfinished</p>	£44



DESCRIPTION	SIZING RANGE	PRICE
<p>Men's Black Tailored Fit Trousers – Flat front trouser with 2 side pockets and 1 rear pocket. In a modern cut, not the slimmest in the range but still offers a contemporary look with more fabric around the thigh area for comfort.</p> <p>Branding: Harbour Hotels Tax Tab on the back right pocket</p> <p>Fabric: 54% Polyester, 44% Wool, 2% Lycra, 270gsm, machine washable</p>	<p>28" – 46" Waist</p> <p>Inside Leg lengths available; Short 29.5" Regular 31.5" Long 33" & 36" unfinished</p>	£44

[Back to Index Page](#)



DESCRIPTION	SIZING RANGE	PRICE
<p>Women's Modern Short Sleeve Oxford Shirt – Lightweight, fitted modern shirt with button down collar and in a cotton rich, wrinkle free finish. Short point collar and pearlised buttons. Customised so the cuffs are sewn back and shirt is sewn down at the bust to prevent gaping.</p> <p>Branding: Garment is supplied plain</p> <p>Fabric: 80% Cotton, 20% Polyester, 150gsm</p>	<p>XS – UK8 S – UK10 M – UK12 L – UK14 XL – UK16 2XL – UK18 3XL – UK20 4XL – UK22</p>	<p>£22.50</p>



DESCRIPTION	SIZING RANGE	PRICE
<p>Women's Slate Grey Chinos – Classic fit chinos in a soft finish fabric with zip fly button fastening at waist, belt loops and two swing pockets to the side. Two non-functional back jetted pockets for style. Customised so the trousers are rolled up and sewn for a contemporary 'cropped' look.</p> <p>Branding: Harbour Hotels tax tab on the back right pocket</p> <p>Fabric: 98% Cotton, 2% Elastane, 275gsm</p>	<p>UK6 – UK18</p>	<p>£29.50</p>

[Back to Index Page](#)



DESCRIPTION	SIZING RANGE	PRICE
Slate Braid Belt – Stretch rubber belt with braided finish and a chrome buckle and tan faux leather piece. Branding: Garment is supplied plain Fabric: Rubber and Faux Leather, 120gsm	One Size – 95 – 125cm	£9

DESCRIPTION	SIZING RANGE	PRICE
-------------	--------------	-------

[Back to Index Page](#)



DESCRIPTION	SIZING RANGE	PRICE
<p>Men's Modern Short Sleeve Oxford Shirt – Lightweight slim fitted modern shirt with button down collar and in a cotton rich, wrinkle free finish. Short point collar and pearlised buttons. Customised so the cuffs are sewn turn back.</p> <p>Branding: Garment is supplied plain</p> <p>Fabric: 80% Cotton, 20% Polyester, 150gsm</p>	XS – 36" S – 38" M – 40" L – 42/44" XL – 46/48" 2XL – 50" 3XL – 52" 4XL – 54" chest	£20.25



DESCRIPTION	SIZING RANGE	PRICE
<p>Men's Slate Grey Chinos – Slim fit chinos in a soft finish fabric with zip fly button fastening at waist, belt loops and two swing pockets to the side. Two back jet pockets with button fastening. Customised so the trousers are rolled up and sewn for a contemporary 'cropped' look (see insert of women's example).</p> <p>Branding: Harbour Hotels tax tab on the back right pocket</p> <p>Fabric: 98% Cotton, 2% Elastane, 275gsm</p>	30" – 44" waist Reg Leg: 80cm Long Leg: 86cm available *42"/44" waist available in reg or unfinished only	£29.50

[Back to Index Page](#)



DESCRIPTION	SIZING RANGE	PRICE
Slate Braid Belt – Stretch rubber belt with braided finish and a chrome buckle and tan faux leather piece. Branding: Garment is supplied plain Fabric: Rubber and Faux Leather, 120gsm	One Size – 95 – 125cm	£9

DESCRIPTION	SIZING RANGE	PRICE
-------------	--------------	-------

[Back to Index Page](#)



DESCRIPTION	SIZING RANGE	PRICE
<p>Women's Charcoal Seamless Performance Tee – Short sleeve tee in a wicking fabric with ribbed hem and cuffs and round neck collar. Stretch fabric in a tight fit for extra support and freedom of movement, with contrast lining.</p> <p>Branding: Contemporary 'H' logo in white vinyl print on front left breast</p> <p>Fabric: 70% Polyester, 30% Polyamide, 70gsm</p>	S – UK10 M – UK12 L – UK14 XL – UK16	£16



DESCRIPTION	SIZING RANGE	PRICE
<p>Women's Charcoal Long Sleeve Tee – 'Sister' to the short sleeve style. Long sleeve performance tee in a wicking fabric with ribbed hem and cuffs and round neck collar. Stretch fabric in a tight fit for extra comfort and freedom of movement.</p> <p>Branding: Contemporary 'H' logo in white vinyl print on front breast</p> <p>Fabric: 70% Polyester, 30% Polyamide, 70gsm</p>	S – UK10 M – UK12 L – UK14 XL – UK16	£19.50

[Back to Index Page](#)



DESCRIPTION	SIZING RANGE	PRICE
<p>Women's Grey Marl Zip Hoodie – Lightweight running hoodie with reflective tape on sleeves, raglan sleeves and thumb holes in self fabric cuffs. Funnel hood with toggles, 2 x zip up side pockets.</p> <p>Branding: Embroidered Harbour Hotels logo on front breast in white</p> <p>Fabric: 100% Polyester French Terry, 180gsm</p>	<p>XS – 30/32" S – 32/34" M – 34/36" L – 36" XL – 38" 2XL – 38/40" chest</p>	<p>£27.25</p>



DESCRIPTION	SIZING RANGE	PRICE
<p>Women's Grey Melange Cowl Neck Hoodie – CoolFit blended fabric with elastane for stretch and comfort in a sporty fit. Raglan sleeve design with reflective elements on hood. Cowl neck style design with toggles. Thumb hole opening at cuffs.</p> <p>Branding: Embroidered Harbour Hotels logo on front breast in white</p> <p>Fabric: 92% Polyester, 8% Elastane, 210gsm</p>	<p>XS – UK8 S – UK10 M – UK12 L – UK14 XL – UK16</p>	<p>£24.50</p>

[Back to Index Page](#)



DESCRIPTION	SIZING RANGE	PRICE
<p>Women's Grey Contrast Zoodie – Feminine fit zip hoodie with adjustable drawcords hood, raglan sleeves with thumbholes and full front zip. Contrast melange fabric on sleeves and body.</p> <p>Branding: Embroidered Harbour Hotels logo on front breast in white</p> <p>Fabric: 89% Polyester, 11% Elastane, 240gsm</p>	<p>XS – UK8 S – UK10 M – UK12 L – UK14 XL – UK16</p>	£27



DESCRIPTION	SIZING RANGE	PRICE
<p>Women's Black 'Gym Shark' Style Leggings – Full length leggings with mesh panels on thigh and calf, in a silk material for incredible cooling. Elasticated waistband with Lycra and breathable blend polyester to feel snug yet comfy. Coin pocket on inside.</p> <p>Branding: Garment supplied plain</p> <p>Fabric: 90% Polyester, 10% Elastane, 250gsm</p>	<p>XS – UK8 S – UK10 M – UK12 L – UK14 XL – UK16</p>	£20

[Back to Index Page](#)



DESCRIPTION	SIZING RANGE	PRICE
<p>Men's Charcoal Seamless Performance Tee – Short sleeve tee in a wicking fabric with ribbed hems and cuffs and a round neck collar. Stretch fabric in a tight fit for comfort and freedom of movement.</p> <p>Branding: Contemporary 'H' logo in white vinyl print on front breast</p> <p>Fabric: 70% Polyester, 30% Polyamide, 70gsm</p>	S – 34" M – 38" L – 42" XL – 46" 2XL – 50" chest	£16



DESCRIPTION	SIZING RANGE	PRICE
<p>Men's Charcoal Long Sleeve Tee – 'Sister' to the short sleeve style. Long sleeve performance tee in a wicking fabric with ribbed hem and cuffs and round neck collar. Stretch fabric in a tight fit for extra comfort and freedom of movement.</p> <p>Branding: Contemporary 'H' logo in white on front breast in white</p> <p>Fabric: 70% Polyester, 30% Polyamide, 70gsm</p>	S – 34" M – 38" L – 42" XL – 46" 2XL – 50" chest	£19.50

[Back to Index Page](#)



DESCRIPTION	SIZING RANGE	PRICE
<p>Men's Grey Marl Zip Hoodie – Lightweight running hoodie with reflective tape on sleeves, raglan sleeves and thumb holes in self fabric cuffs. Funnel hood with toggles, 2 x zip up side pockets.</p> <p>Branding: Embroidered Harbour Hotels logo on front breast in white</p> <p>Fabric: 100% Polyester French Terry, 180gsm</p>	<p>XS – 34/36" S – 35/36" M – 37/39" L – 40/42" XL – 43/45" 2XL – 46/48" chest</p>	<p>£27.75</p>



DESCRIPTION	SIZING RANGE	PRICE
<p>Men's Grey Melange Cowl Neck Hoodie – CoolFit blended fabric with elastane for stretch and comfort in a sporty fit. Raglan sleeve design with reflective elements on hood. Cowl neck style design with toggles. Thumb hole opening at cuffs.</p> <p>Branding: Embroidered Harbour Hotels logo on front breast in white</p> <p>Fabric: 92% Polyester, 8% Elastane, 210gsm</p>	<p>S – 36" M – 40" L – 42" XL – 45" 2XL – 48" chest</p>	<p>£24.50</p>

[Back to Index Page](#)



DESCRIPTION	SIZING RANGE	PRICE
<p>Men's Grey Contrast Zoodie – Sports hoodie with full zip and adjustable drawcords hood, raglan sleeves with thumb holes and full front zip. Contrast fabric on sleeves and body.</p> <p>Branding: Embroidered Harbour Hotels logo on front breast in white</p> <p>Fabric: 80% Polyester, 11% Elastane, 240sm</p>	<p>S – 37/39" M – 39/41" L – 41/43" XL – 43/45" 2XL – 45/48" chest</p>	<p>£27</p>



DESCRIPTION	SIZING RANGE	PRICE
<p>Men's Grey 1/4 Zip Performance Sweat – Soft, lightweight fabric which is perfect during outdoor workouts or great for layering. Enhanced wicking fabric helps to keep you dry and comfortable. Fits close to the body without compression.</p> <p>Branding: Contemporary 'H' logo in white vinyl print on front breast</p> <p>Fabric: 100% Polyester, 155gsm</p>	<p>S – 34" M – 38" L – 42" XL – 46" 2XL – 50" 3XL – 54" chest</p>	<p>£17</p>

[Back to Index Page](#)



DESCRIPTION	SIZING RANGE	PRICE
<p>Men's Black Slim Training Pant – A lighter weight style than the jogger, slim tapered leg with twin stitched cuff with zip. 2 x side entry pockets, fully elasticated waistband with inner drawcord.</p> <p>Branding: Garment supplied plain</p> <p>Fabric: 100% Polyester Pique, 200gsm</p>	XS – 28/30" S – 30/32" M – 32/34" L – 34/36" XL – 38/40" 2XL – 40/42" waist	£20.50



DESCRIPTION	SIZING RANGE	PRICE
<p>Men's Black Slim Joggers – CoolFit blended fabric with elastane for stretch and comfort and a great fit. Tapered leg with zip fastening at ankles and two side and back pockets. Elasticated waistband with self coloured drawcords. UPF 30+ protection.</p> <p>Branding: Garment supplied plain</p> <p>Fabric: 60% Cotton, 35% Polyester, 5% Elastane</p>	S – 30" M – 32" L – 34" XL - 36" 2XL – 38" waist	£22

[Back to Index Page](#)

Reception Team



HARBOUR

HOTELS



DESCRIPTION	SIZING RANGE	PRICE
<p>Women's Navy Shift Dress – Round neck shift dress with princess seam and short sleeves. Stretch lining with centre vent for a smart look.</p> <p>Branding: Embroidered 'H' logo in tone-on-tone thread on left chest when worn</p> <p>Fabric: 54% Polyester, 44% Wool, 2% Lycra</p>	<p>UK6 – UK24 Regular UK8 – UK20 Long</p>	<p>£72</p>



DESCRIPTION	SIZING RANGE	PRICE
<p>Women's Navy V-Neck Dress – Tailored V-neck dress with short sleeves and vent detail. Full stretch lining with bust darts and centre vent. Slimmer fitting than the 'shift' dress.</p> <p>Branding: Embroidered 'H' logo in tone-on-tone thread on left chest when worn</p> <p>Fabric: 65% Polyester, 35% Wool</p>	<p>UK6 – UK24 Regular UK8 – UK20 Long</p>	<p>£72</p>

[Back to Index Page](#)



DESCRIPTION	SIZING RANGE	PRICE
Women's White Long Sleeve Blouse – Crepe de Chine, round neck blouse with front pleat detail, bust darts and single gold button cuff. Rear gold zip detail, lightweight and cool fabric which drapes over the body for a flattering look. Supplied with a nude camisole. Branding: Garment supplied plain Fabric: 94% Polyester, 6% Elastane	UK6 – UK30	£28.25



DESCRIPTION	SIZING RANGE	PRICE
Women's White Short Sleeve Blouse – Crepe de Chine round neck short sleeve blouse with front pleat detail, bust darts and rear gold zip detail. Lightweight and cool fabric which drapes over the body for a flattering look. Supplied with a nude camisole. Branding: Garment supplied plain Fabric: 94% Polyester, 6% Elastane	UK6 – UK30	£28.25

[Back to Index Page](#)



DESCRIPTION	SIZING RANGE	PRICE
<p>Women's White High Quality Oxford Shirt – High quality oxford shirt in a modern fit with tone-in-tone buttons and neck tape in a contrast light blue colour. This garment fits true to size and is sewn down over bust to prevent gaping.</p> <p>Branding: Garment is supplied plain</p> <p>Fabric: 100% Cotton</p>	XS – UK6 S – UK8 M – UK10/12 L – UK14 XL – UK16 2XL – UK18	£40



DESCRIPTION	SIZING RANGE	PRICE
<p>Women's Navy Slim Jacket – Short, slim fit 2 button jacket with a slim notch lapel and cutaway front. Front breast darts and jetted pockets with a plain back and tailored back panels. 1 inside pocket. Similar to a high street blazer style jacket.</p> <p>Branding: Embroidered 'H' logo in tone-on-tone thread on left lapel when worn</p> <p>Fabric: 54% Polyester, 44% Wool, 2% Lycra</p>	UK6 – UK16 Petite UK4 – UK18 Regular UK6 – UK16 Long	£90

[Back to Index Page](#)



DESCRIPTION	SIZING RANGE	PRICE
<p>Women's Navy Longline Jacket – Semi fitted, 2 button jacket with lapel and pocket contrast detail. Centre vent with tailored back panels and 1 inside pocket. The most traditional style jacket in the range.</p> <p>Branding: Embroidered 'H' logo in tone-on-tone thread on left lapel when worn</p> <p>Fabric: 54% Polyester, 44% Wool, 2% Lycra</p>	UK6 – UK16 Petite UK6 – UK24 Regular UK8– UK18 Long	£90



DESCRIPTION	SIZING RANGE	PRICE
<p>Women's Navy Box Style Jacket – 3 button tailored, contemporary fit jacket with peaked lapels and tailored back panels. Centre vent and 1 inside pocket.</p> <p>Branding: Embroidered 'H' logo in tone-on-tone thread on left lapel when worn</p> <p>Fabric: 65% Polyester, 35% Wool</p>	UK6 – UK16 Petite UK6 – UK24 Regular UK8 – UK18 Long	£82

[Back to Index Page](#)



DESCRIPTION	SIZING RANGE	PRICE
<p>Women's Navy Straight Skirt – Straight style skirt with centre vent, shaped back panels and full stretch lining. Sits on the natural waist, a simple yet classic style and fits true to size.</p> <p>Branding: Harbour Hotels tax tab on the back right waistband</p> <p>Fabric: 54% Polyester, 44% Wool, 2% Lycra, 270gsm, machine washable</p>	<p>UK2 – UK24 Regular 22"</p> <p>UK8 – UK24 Long 25"</p> <p>UK8 – UK24 X Long 27"</p>	£36



DESCRIPTION	SIZING RANGE	PRICE
<p>Women's Navy A-Line Skirt – Flared skirt with front seam and kick pleat detail. Narrow waistband that sits high on the waist, fob pocket and full stretch lining. Super comfortable to wear and true to size.</p> <p>Branding: Harbour Hotels tax tab on the back right waistband</p> <p>Fabric: 54% Polyester, 44% Wool, 2% Lycra, 270gsm, machine washable</p>	<p>UK6 – UK24</p> <p>Available in regular length only 22"</p>	£39

[Back to Index Page](#)



DESCRIPTION	SIZING RANGE	PRICE
<p>Women's Navy Slim Leg Trousers – Slimmest style in the range with 2 side pockets, mock hip pockets and belt loops.</p> <p>Branding: Harbour Hotels tax tab on the back right waistband</p> <p>Fabric: 54% Polyester, 44% Wool, 2% Lycra, 270gsm, machine washable</p>	<p>UK4 – UK24</p> <p>Inside leg lengths available; Short 27" Regular 29" Long 31" X Long 33" & 36" unfinished</p>	£44



DESCRIPTION	SIZING RANGE	PRICE
<p>Women's Navy Tapered Leg Trousers – Contemporary cut for a slimmer look that tapers to the ankle. 2 side pockets, mock rear pockets, front hook fastening and half lined. True to size and great worn as 7/8 length.</p> <p>Branding: Harbour hotels tax tab on back right pocket</p> <p>Fabric: 54% Polyester, 44% Wool, 2% Lycra, 270gsm, machine washable</p>	<p>UK4 – UK24</p> <p>Inside leg lengths available: Short 27" Regular 29" Long 31" X Long 33" & 36" unfinished</p>	£44

[Back to Index Page](#)



DESCRIPTION	SIZING RANGE	PRICE
<p>Women's Navy Straight Leg Trousers – Single button front fastening with a comfortable waistband, great style if you want comfort around your tummy. Key card pocket and fit is true to size.</p> <p>Branding: Harbour Hotels tax tab on the back right waistband</p> <p>Fabric: 54% Polyester, 44% Wool, 2% Lycra, 270gsm, machine washable</p>	<p>UK6 – UK24</p> <p>Inside leg lengths available; Short 27" Regular 29" Long 31" X Long 33" & 36" unfinished</p>	£44

DESCRIPTION	SIZING RANGE	PRICE

[Back to Index Page](#)



DESCRIPTION	SIZING RANGE	PRICE
<p>Men's White High Quality Oxford Shirt – High quality Oxford shirt in a modern fit with tone-in-tone buttons and neck tape in contrast light blue colour. This garment fits true to size.</p> <p>Branding: Garment is supplied plain</p> <p>Fabric: 100% Cotton</p>	<p>S – 36" M – 38" L – 40" XL – 42" 2XL – 44" 3XL – 46/48" chest</p>	£37.75



DESCRIPTION	SIZING RANGE	PRICE
<p>*Porters Only* Men's Navy Waistcoat – 5 button front waistcoat with 2 welt pockets. Cloth backed in and available in regular length only.</p> <p>Branding: Embroidered 'H' logo in tone-on-tone thread on left chest when worn</p> <p>Fabric: 54% Polyester, 44% Wool, 2% Lycra, 270gsm, machine washable</p>	<p>34" – 56" Regular Only</p>	£43

[Back to Index Page](#)



DESCRIPTION	SIZING RANGE	PRICE
<p>Men's Navy Slim Fit Jacket – Single breasted, 2 button slim fit jacket. Slim lapels with saddle stitching, ticket pocket and slim pocket jets. Similar to a high street contemporary style jacket. Available in 3 lengths.</p> <p>Branding: Embroidered 'H' logo in tone-on-tone thread on left lapel when worn</p> <p>Fabric: 54% Polyester, 44% Wool, 2% Lycra, 270gsm, machine washable</p>	34" – 44" Short 34" – 46" Regular 34" – 44" Long	£99



DESCRIPTION	SIZING RANGE	PRICE
<p>Men's Navy Tailored Fit Jacket – Single breasted, 2 button tailored jacket. 3 inside pockets, mobile phone pocket and side vents. A little longer in length for a flattering look. Available in 3 lengths.</p> <p>Branding: Embroidered 'H' logo in tone-on-tone thread on left lapel when worn</p> <p>Fabric: 54% Polyester, 44% Wool, 2% Lycra, 270gsm, machine washable</p>	36" – 48" Short 34" – 56" Regular 38" – 48" Long	£99

[Back to Index Page](#)



DESCRIPTION	SIZING RANGE	PRICE
<p>Men's Navy Super Slim Trousers – Slimmest style in the range, most similar to a high street slimmer style. Flat front design.</p> <p>Branding: Harbour Hotels tax tab on back right pocket</p> <p>Fabric: 64% Polyester, 34% Wool, 2% Elastane, machine washable</p>	<p>28" – 40" Waist</p> <p>Inside Leg lengths available; Short 29.5" Regular 31.5" Long 33" & 36" unfinished</p>	£35



DESCRIPTION	SIZING RANGE	PRICE
<p>Men's Navy Slim Leg Trousers – Slim fit with flat front style, 2 side pockets and 1 rear pocket. Trousers taper toward the ankle and are great for a contemporary look on a slimmer build.</p> <p>Branding: Harbour Hotels tax tab on back right pocket</p> <p>Fabric: 54% Polyester, 44% Wool, 2% Lycra, 270gsm, machine washable</p>	<p>28" – 40" Waist</p> <p>Inside leg lengths available; Short 29.5" Regular 31.5" Long 33" & 36" unfinished</p>	£44

[Back to Index Page](#)



DESCRIPTION	SIZING RANGE	PRICE
<p>Men's Navy Tailored Fit Trousers – Flat front trouser with 2 side pockets and 1 rear pocket. In a modern cut, not the slimmest in the range but still offers a contemporary look with more fabric around the thigh area for comfort.</p> <p>Branding: Harbour Hotels tax tab on back right pocket</p> <p>Fabric: 54% Polyester, 44% Wool, 2% Lycra, 270gsm, machine washable</p>	<p>28" – 46" Waist</p> <p>Inside Leg lengths available; Short 29.5" Regular 31.5" Long 33" & 36" unfinished</p>	<p>£44</p>

DESCRIPTION	SIZING RANGE	PRICE

[Back to Index Page](#)



Sales/Events Team

HARBOUR

HOTELS



DESCRIPTION	SIZING RANGE	PRICE
<p>Women's Cream Long Sleeve Blouse – Crepe de Chine, round neck blouse with front pleat detail, bust darts and single gold button cuff. Rear gold zip detail, lightweight and cool fabric which drapes over the body shape for a flattering look. Supplied with a nude camisole.</p> <p>Branding: Garment supplied plain</p> <p>Fabric: 94% Polyester, 6% Elastane</p>	UK6 – UK30	£28.25



DESCRIPTION	SIZING RANGE	PRICE
<p>Women's Cream Short Sleeve Blouse – Crepe de Chine, round neck short sleeve blouse with front pleat detail, bust darts and rear gold zip detail. Lightweight and cool fabric which drapes over the body for a flattering look. Supplied with a nude camisole.</p> <p>Branding: Garment supplied plain</p> <p>Fabric: 94% Polyester, 6% Elastane</p>	UK6 – UK30	£28.25

[Back to Index Page](#)



DESCRIPTION	SIZING RANGE	PRICE
<p>Women's Plum Contemporary Jacket – Modern suit jacket with notch neck detail and one button fastening for a contemporary look. Teflon coated for durability. Fully lined with internal breast pocket and functional jetted pockets.</p> <p>Branding: Embroidered 'H' logo in tone-on-tone thread on left chest when worn</p> <p>Fabric: 66% Polyester, 33% Viscose, 1% Lycra</p>	UK6 – UK26	£63.50



DESCRIPTION	SIZING RANGE	PRICE
<p>Women's Plum Contemporary Trousers – Flattering drop waist cigarette style trousers with a narrow leg line cut to finish on the ankle for a contemporary look. Permanent crease to keep the trousers looking chic wash after wash. Half lined, side pockets and belt loops.</p> <p>Branding: Harbour Hotels tax tab on waistband</p> <p>Fabric: 66% Polyester, 33% Viscose, 1% Lycra</p>	UK6 – UK26 Reg or Unfinished (if alternative leg length needed)	£33

[Back to Index Page](#)



DESCRIPTION	SIZING RANGE	PRICE
Women's Plum Pleat Back Skirt – Pencil skirt with drop waist styling, centre back zip and vent. Fully lined with pleat detail at the back for a flattering finish. Branding: Garment Supplied Plain Fabric: 66% Polyester, 33% Viscose, 1% Lycra	UK6 – UK26 Reg	£27.50

DESCRIPTION	SIZING RANGE	PRICE
-------------	--------------	-------

[Back to Index Page](#)



DESCRIPTION	SIZING RANGE	PRICE
<p>Men's White Skinny Shirt – Slim fit skinny shirt for a contemporary, smart finish. Easy to iron fabric with semi cutaway collar. Twin rear darts for a defined silhouette.</p> <p>Branding: Garment Supplied Plain</p> <p>Fabric: 55% Cotton, 45% Polyester</p>	14" – 18" collar	£18



DESCRIPTION	SIZING RANGE	PRICE
<p>Men's Contemporary Plum Jacket – Modern jacket with narrow lapels and single action back. Teflon coated for durability. Tapered sleeves for a contemporary look and functional jetted pockets with flaps. Internal breast pockets.</p> <p>Branding: Embroidered 'H' logo in tone-on-tone thread on left lapel when worn</p> <p>Fabric: 66% Polyester, 33% Viscose, 1% Lycra</p>	34" – 52" chest	£79.50

[Back to Index Page](#)



DESCRIPTION	SIZING RANGE	PRICE
<p>Men's Contemporary Plum Trousers – Modern, flat front slim style trousers with tapered leg and sitting slightly lower on the hip. Front zip fastening, side pockets and back pockets. Half lined with loops. Permanent crease detail to keep the trousers looking smart wash after wash.</p> <p>Branding: Harbour Hotels tax tab on reverse waistband</p> <p>Fabric: 66% Polyester, 33% Viscose, 1% Lycra</p>	<p>28" – 50" waist</p> <p>Inside leg lengths available: Reg 31" Long 33"</p>	£35

DESCRIPTION	SIZING RANGE	PRICE

[Back to Index Page](#)

The Kings Arms

2020 F&B Team Wardrobe Page 115
Sales & Reception Team Page 116 - 118



DESCRIPTION	SIZING RANGE	PRICE
<p>Olive Textured Bib Apron – Interesting, textured detail fabric with contrast faux leather features and a handy tablet friendly pocket on the front. Self fabric waistband which fastens with double d-ring. 85c industrial wash or 60c domestic wash.</p> <p>Branding: Embroidered Kings logo in teal on bottom left hand of pocket when worn (logo goes through pocket)</p> <p>Fabric: 100% Cotton yarn dyed oxford</p>	One size, 86cm long and 72cm wide	£19.75 each



DESCRIPTION	SIZING RANGE	PRICE
<p>Green Knitted Tie – High st option, stock dependant. Knitted, textured tie to complete the new 2020 The Kings wardrobe look!</p> <p>Branding: Garment supplied plain</p> <p>Fabric: 100% Polyester</p>	5.5cm width One Size	£12

[Back to Index Page](#)



DESCRIPTION	SIZING RANGE	PRICE
<p>Women's Grey Check Slim Jacket – Short, slim fit 2 button jacket with a cutaway front and slim notch lapel. Front breast darts, jetted pockets and plain back.</p> <p>Branding: Embroidered Kings 'K' in tone-on-tone thread on left lapel when worn</p> <p>Fabric: 54% Polyester, 44% Wool, 2% Lycra</p>	UK6 – UK16 Petite UK6 – UK24 Regular UK6 – UK18 Long	£103.25



DESCRIPTION	SIZING RANGE	PRICE
<p>Women's Grey Check Longline Jacket – Semi fitted, 2 button jacket in a longer line style with 1 inside pocket and centre vent with tailored back panels. More traditional in cut.</p> <p>Branding: Embroidered Kings 'K' in tone-on-tone thread on left lapel when worn</p> <p>Fabric: 54% Polyester, 44% Wool, 2% Lycra</p>	UK6 – UK16 Petite UK6 – UK24 Regular UK8 – UK18 Long	£105.50

[Back to Index Page](#)



DESCRIPTION	SIZING RANGE	PRICE
<p>Women's Grey Check Dress – Slim fit, short sleeve dress with waistline dart detail and centre back vent.</p> <p>Branding: Embroidered Kings 'K' in tone-on-tone thread on front left breast when worn</p> <p>Fabric: 54% Polyester, 44% Wool, 2% Lycra</p>	UK6 – UK24 Regular UK8 – UK18 Long	£92



DESCRIPTION	SIZING RANGE	PRICE
<p>Women's Grey Check Straight Skirt – Pencil skirt with centre vent, shaped back panels and a full stretch lining.</p> <p>Branding: Embroidered Kings 'K' in tone-on-tone thread on back waist</p> <p>Fabric: 54% Polyester, 44% Wool, 2% Lycra</p>	UK6 – UK24 Regular (22") UK8 – UK18 Long (25")	£44.75

[Back to Index Page](#)



DESCRIPTION	SIZING RANGE	PRICE
<p>Women's Grey Check Slim Fit Trouser – Slim leg trouser with 2 side pockets, mock hip pockets and belt loops.</p> <p>Branding: Embroidered Kings 'K' in tone-on-tone thread on back waist</p> <p>Fabric: 54% Polyester, 44% Wool, 2% Lycra</p>	<p>UK6 – UK24 waist</p> <p>Available in lengths; Short (27") Reg (29") Long (31") XL (33")</p>	£55



DESCRIPTION	SIZING RANGE	PRICE
<p>Women's Grey Check Tapered Leg Trouser – Tailored leg tapering to the bottom with front hook fastening, 2 side pocket sand mock rear pockets with belt loops.</p> <p>Branding: Embroidered Kings 'K' in tone-on-tone thread on back waist</p> <p>Fabric: 54% Polyester, 44% Wool, 2% Lycra</p>	<p>UK6 – UK24 waist</p> <p>Available in lengths; Short (27") Reg (29") Long (31") XL (33")</p>	£55

[Back to Index Page](#)

Froyle Park & Northbrook Park





DESCRIPTION	SIZING RANGE	PRICE
<p>Women's Cream Long Sleeve Blouse – Crepe de Chine, round neck blouse with front pleat detail, bust darts and single gold button cuff. Rear gold zip detail, lightweight and cool fabric which drapes over the body shape for a flattering look.</p> <p>Branding: Garment supplied plain</p> <p>Fabric: 94% Polyester, 6% Elastane</p>	UK6 – UK30	£28.25



DESCRIPTION	SIZING RANGE	PRICE
<p>Women's Cream Short Sleeve Blouse – Crepe de Chine, round neck short sleeve blouse with front pleat detail, bust darts and rear gold zip detail. Lightweight and cool fabric which drapes over the body for a flattering look.</p> <p>Branding: Garment supplied plain</p> <p>Fabric: 94% Polyester, 6% Elastane</p>	UK6 – UK30	£28.25

[Back to Index Page](#)



DESCRIPTION	SIZING RANGE	PRICE
<p>Women's Houndstooth Tailored Jacket – Single breasted tailored fit jacket with 2 button detail and breast pocket with side flap pockets. 2 inside pockets and back vent. Eye catching 'houndstooth' pattern and feminine fit.</p> <p>Branding: Garment supplied plain</p> <p>Fabric: 62% Polyester, 26% Viscose, 10% Wool, 2% Lycra</p>	<p>UK6 – UK18 Petite UK6 – UK24 Regular UK8 – UK18 Long</p>	£60



DESCRIPTION	SIZING RANGE	PRICE
<p>Women's Black Slim Leg Trouser – Slim leg trouser with flat front design, side pockets and mock hip pockets. The slimmest style in the range for a contemporary look.</p> <p>Branding: Harbour Hotels tax tab on back waistband</p> <p>Fabric: 64% Polyester, 34% Viscose, 2% Elastane</p>	<p>UK4 – UK24</p> <p>Leg lengths available: Short 27" Regular 29" Long 31" XL 33" & 36" unfinished</p>	£35

[Back to Index Page](#)



DESCRIPTION	SIZING RANGE	PRICE
<p>Women's Black Tapered Leg Trouser – Contemporary cut for a slimmer look that tapers to the ankle. 2 side pockets, mock rear pockets, front hook fastening and half lined. True to size and great worn as 7/8 length.</p> <p>Branding: Harbour Hotels tax tab on back waistband</p> <p>Fabric: 54% Polyester, 44% Wool, 2% Lycra, 270gsm, machine washable</p>	<p>UK4 – UK24</p> <p>Inside leg lengths available: Short 27" Regular 29" Long 31" X Long 33" & 36" unfinished</p>	£44



DESCRIPTION	SIZING RANGE	PRICE
<p>Women's Black Straight Leg Trouser – Single button front fastening with a comfort waistband, great style if you want comfort around your tummy. Key card pocket and fit is true to size.</p> <p>Branding: Harbour Hotels tax tab on back waistband</p> <p>Fabric: 54% Polyester, 44% Wool, 2% Lycra, 270gsm, machine washable</p>	<p>UK6 – UK24</p> <p>Inside leg lengths available; Short 27" Regular 29" Long 31" X Long 33" & 36" unfinished</p>	£44

[Back to Index Page](#)



DESCRIPTION	SIZING RANGE	PRICE
<p>Women's Black Straight Skirt – Straight style with centre vent, shaped back panels and full stretch lining. Simple yet classic style and fits true to size.</p> <p>Branding: Harbour Hotels tax tab on back waistband</p> <p>Fabric: 54% Polyester, 44% Wool, 2% Lycra, 270gsm, machine washable</p>	<p>UK6 – UK24 Regular (22")</p> <p>UK8 – UK24 Long (25")</p> <p>UK8 - UK24 X Long (27")</p>	£36



DESCRIPTION	SIZING RANGE	PRICE
<p>Women's Black A-Line Skirt – Flared skirt with front seam and kick pleat detail. Narrow waistband that sits high on the waist, fob pocket and full stretch lining. Super comfortable to wear and true to size.</p> <p>Branding: Harbour Hotels tax tab on back waistband</p> <p>Fabric: 54% Polyester, 44% Wool, 2% Lycra, 270gsm, machine washable</p>	<p>UK6 – UK24</p> <p>Available in regular length only 22"</p>	£39

[Back to Index Page](#)



DESCRIPTION	SIZING RANGE	PRICE
<p>Women's Houndstooth Shift Dress – Classic shift dress with feminine capped sleeve and belt detail in the 'houndstooth' pattern. Dart detailing at the side waist and Lycra mix makes for a comfortable wear.</p> <p>Branding: Garment supplied plain</p> <p>Fabric: 62% Polyester, 26% Viscose, 10% Wool, 2% Lycra</p>	UK6 – UK24	£65



DESCRIPTION	SIZING RANGE	PRICE
<p>Women's Black 'Barbour' Style Jacket – Quilted jacket in the style of a Barbour jacket. Three front pockets and two inside pockets with soft fabric inside the two big front pockets to keep hands warm. Super stylish whilst warm and practical.</p> <p>Branding: Northbrook or Froyle Park embroidery on front left chest</p> <p>Fabric: 100% Polyester</p>	XS – UK6 S – UK8 M – UK10/12 L – UK14 XL – UK16 2XL – UK18	£115

[Back to Index Page](#)



Southampton Harbour Hotel



HARBOUR
HOTELS



Southampton HarBar

Floor Team Pages 126 - 132
Managers Pages 133 - 134

HARBOUR

HOTELS



DESCRIPTION	SIZING RANGE	PRICE
<p>Women's Contemporary Light Blue Oxford Shirt – Soft feminine collar with mother of pearl white buttons. Narrow cuffs, darts at bustline and back panel for a feminine shape. Sewn down over the bust to prevent gaping.</p> <p>Branding: Garment supplied plain</p> <p>Fabric: 70% Combed Cotton, 30% Polyester, 135gsm</p>	XS – UK8 S – UK10 M – UK12 L – UK14 XL – UK16 2XL – UK18 3XL – UK20 4XL – UK22 5XL – UK24 6XL – UK26	£22.75



DESCRIPTION	SIZING RANGE	PRICE
<p>Women's Khaki Stone Chino – Classic fit chino in a soft finish fabric. Zip fly with button fastening at waist. Belt loops and two swing pockets to the side and two non-functional back jetted pockets. Customised so the trousers are rolled up and sewn for a cropped look.</p> <p>Branding: Harbour Hotels tax tab on back pocket</p> <p>Fabric: 98% Cotton, 2% Elastane, 275gsm</p>	XXS – UK6 XS – UK8 S – UK10 M – UK12 L – UK14 XL – UK16 2XL – UK18 Reg Length: 30"	£29.50

[Back to Index Page](#)



DESCRIPTION	SIZING RANGE	PRICE
<p>Women's Floor Team Denim Wax Look Bib Apron – Full length apron with a waxed effect giving water repellent properties. 100cm faux leather ties and neckband with metal buckle adjuster. Contrast jeans stitching with functional patch pocket and cloth holder.</p> <p>Branding: Harbour Hotels tax tab on back side waistband area</p> <p>Fabric: 100% Cotton Denim with Acrylic coating, 350gsm</p>	One size	£21



DESCRIPTION	SIZING RANGE	PRICE
<p>Women's Runner Team Denim Wax Look Waist Apron – Waist apron with a waxed effect giving water repellent properties. Contrast jeans stitching with functional features including patch pocket and cloth holder. Wash at 40c.</p> <p>Branding: Harbour Hotels tax tab on back waistband</p> <p>Fabric: 100% Cotton Denim with Acrylic coating, 350gsm</p>	One Size	£18.50

[Back to Index Page](#)



DESCRIPTION	SIZING RANGE	PRICE
<p>Women's Black HarBar 'Barbour' Jacket – (shown in Men's) Quilted jacket in the style of a Barbour jacket. Three front pockets and two inside pockets with soft fabric inside the two big front pockets to keep hands warm. Super stylish whilst warm and practical.</p> <p>Branding: HarBar on the 6th embroidery on front left chest, under the pocket flap</p> <p>Fabric: 100% Polyester</p>	XS – UK6 S – UK8 M – UK10/12 L – UK14 XL – UK16 2XL – UK18	£115

DESCRIPTION	SIZING RANGE	PRICE

[Back to Index Page](#)



DESCRIPTION	SIZING RANGE	PRICE
<p>Men's Contemporary Light Blue Oxford Shirt – Soft button down collar with cross stitched mother of pearl white buttons. Narrow cuffs and left chest pocket. Back yoke with 2 overstitched side pleats. Curved bottom hem.</p> <p>Branding: Garment supplied plain</p> <p>Fabric: 70% Combed Cotton, 30% Polyester, 135gsm</p>	<p>S – 14.5/15" M – 15.5" L – 16.5" XL – 17.5" 2XL – 18" 3XL – 19" 4XL – 19.5" 5XL – 20" 6XL – 21" collar</p>	£21



DESCRIPTION	SIZING RANGE	PRICE
<p>Men's Khaki Stone Chinos – Slim fit cotton chino made with elastane for a comfortable, stretchy fit. Two back jet pockets with button fastening. Two front pockets. Zip fly and button fastening at waist and belt loops. Customised so the trousers are rolled up and sewn for a cropped look.</p> <p>Branding: Harbour Hotels tax tab on back right pocket</p> <p>Fabric: 98% Cotton, 2% Elastane, 275gsm</p>	<p>XS – 30" S – 32" M – 34" L – 36" XL – 38" 2XL - 40" 3XL – 42"* 4XL – 44"*</p> <p>Reg: 80cm Long: 86cm</p>	£29.50

*3XL/4XL available in Reg/unf only

[Back to Index Page](#)



DESCRIPTION	SIZING RANGE	PRICE
<p>Men's Floor Team Denim Wax Look Bib Apron – Full length apron with a waxed effect giving water repellent properties. 100cm faux leather ties and neckband with metal buckle adjuster. Contrast jeans stitching with functional patch pocket and cloth holder.</p> <p>Branding: Harbour Hotels tax tab on back</p> <p>Fabric: 100% Cotton Denim with Acrylic coating, 350gsm</p>	One size	£21



DESCRIPTION	SIZING RANGE	PRICE
<p>Men's Runner Team Denim Wax Look Waist Apron – Waist apron with a waxed effect giving water repellent properties. Contrast jeans stitching with functional features including patch pocket and cloth holder. Wash at 40c.</p> <p>Branding: Harbour Hotels tax tab on back</p> <p>Fabric: 100% Cotton Denim with Acrylic coating, 350gsm</p>	One Size	£18.50

[Back to Index Page](#)



DESCRIPTION	SIZING RANGE	PRICE
<p>Men's Black HarBar 'Barbour' Jacket – Quilted jacket in the style of a Barbour jacket. 5 front pockets and two inside pockets. Soft fabric inside the front pockets to keep hands warm. Super stylish whilst warm and practical.</p> <p>Branding: HarBar on the 6th embroidery on front left chest, under the pocket flap</p> <p>Fabric: 100% Polyester</p>	<p>S – 38" M – 40" L – 42" XL – 44" 2XL – 46/48" 3XL – 50/52" chest</p>	<p>£115</p>

DESCRIPTION	SIZING RANGE	PRICE

[Back to Index Page](#)



DESCRIPTION	SIZING RANGE	PRICE
<p>Women's Premium Navy Patterned Shirt – high quality poplin fabric with an easy care finish and rounded hem. In a feminine cut with all over 'dots' pattern and contrast inner collar and cuffs. Customised so the bust is sewn down to prevent gaping.</p> <p>Branding: Garment supplied plain</p> <p>Fabric: 100% Cotton, 100gsm</p>	<p>S – UK10 M – UK12/14 L – UK16/18 XL – UK20 2XL – UK22/24</p>	£40



DESCRIPTION	SIZING RANGE	PRICE
<p>Women's Navy Skinny Chinos – Sleek, modern skinny fit but not too slim. Stretch twill fabric for maximum comfort and ease of movement. Peached finish for a soft touch feel. Customised so the chinos are rolled up and sewn for a cropped look.</p> <p>Branding: Harbour Hotels tax tab on back right pocket</p> <p>Fabric: 98% Cotton, 2% Elastane, 290gsm</p>	<p>UK6 – UK17</p> <p>Reg: 30" Long: 32"</p>	£28

[Back to Index Page](#)



DESCRIPTION	SIZING RANGE	PRICE
<p>Men's Premium Navy Patterned Shirt – high quality poplin fabric with an easy care finish and rounded hem. Classic fit with a pleat on rear yoke. All over 'dot's print with contrast inner collar/cuffs.</p> <p>Branding: Garment supplied plain</p> <p>Fabric: 100% Cotton</p>	<p>S – 38/40" M – 42" L – 44" XL – 46" 2XL – 48/50" chest</p>	£37.75



DESCRIPTION	SIZING RANGE	PRICE
<p>Men's Navy Skinny Chinos – Sleek, modern skinny fit but not too slim. Stretch twill fabric for maximum comfort and ease of movement. Peached finish for a soft touch feel. Customised so the chinos are rolled up and sewn up for a cropped look.</p> <p>Branding: Harbour Hotels tax tab on back right pocket</p> <p>Fabric: 98% Cotton, 2% Elastane, 290gsm</p>	<p>28" – 40" waist</p> <p>Reg: 31" Long: 33"</p>	£28

[Back to Index Page](#)

Southampton
Receptionists Pages
136 - 138
Porters Pages 139 - 144
Managers Pages 145 - 149



HARBOUR

HOTELS



DESCRIPTION	SIZING RANGE	PRICE
<p>Women's Wrap Style Navy Tunic – ¾ sleeve soft touch tunic with asymmetrical front with concealed button and tie fastening. Notched deep cuff on the sleeves and mock obi belt waist design for a flattering silhouette.</p> <p>Supplied with a black camisole.</p> <p>Branding: Harbour Hotels tax tab</p> <p>Fabric: 100% Stretch Soft Touch Polyester, 200gsm</p>	UK6 – UK26	£27.50

SPEAK TO 4COUTURE – NEW LOOK IN PLAY AS OF 2021

DESCRIPTION	SIZING RANGE	PRICE
<p>Women's Navy Slim Leg Trouser – Slim leg design with a flattering fit. Flat front style with zip fly and button fastening. Wash up to 60c.</p> <p>Branding: Garment supplied plain</p> <p>Fabric: 100% Polyester, 200gsm</p>	UK6 – UK28 Inside leg lengths available: Short 29" Reg 31" Long 33" X Long 36"	£19.99

[Back to Index Page](#)



DESCRIPTION	SIZING RANGE	PRICE
<p>Men's Light Blue Contrast Oxford Shirt – Fused, stand up collar with contrast navy coloured inner collar and cuff. Tailored fit for a contemporary look, back yoke and rounded hem.</p> <p>Branding: Garment is supplied plain</p> <p>Fabric: 85% Cotton, 15% Polyester, 125gsm</p>	<p>S – 36/38" M – 40" L – 42" XL – 44" 2XL – 46/48" chest</p>	£23



DESCRIPTION	SIZING RANGE	PRICE
<p>Men's Super Slim Navy Polka Dot Jacket – Slim fit jacket, our most fitting in shape with peaked lapel and 1 button fastening. Twin rear vents. Customised with the 'Harbour' teal colour fabric on upper pocket.</p> <p>Branding: Embroidered 'H' logo on left lapel when worn in tone-on-tone thread</p> <p>Fabric: 64% Polyester, 34% Viscose, 2% Elastane</p>	<p>34" – 44" Short 34" – 46" Reg 34" – 44" Long</p>	£79

[Back to Index Page](#)



DESCRIPTION	SIZING RANGE	PRICE
<p>Men's Navy Polka Dot Super Slim Trousers – Flat front, slim fit trouser which is the slimmest in the range and as close to a high street skinnier style.</p> <p>Branding: Harbour Hotels tax tab</p> <p>Fabric: 64% Polyester, 34% Viscose, 2% Elastane</p>	<p>28" – 40" waist</p> <p>Inside leg lengths Available; Short 29.5" Regular 31.5" Long 33" & 36" unfinished</p>	<p>£35</p>



DESCRIPTION	SIZING RANGE	PRICE
<p>Men's Blue Stripe Socks – Made in the UK. Bold blue stripe cotton socks in the 'Harbour' colour palette which add the 'pop' to the HarBar look when worn with the cropped trouser and brogue footwear! *Subject to inventory stock*</p> <p>Branding: Garment Supplied Plain</p> <p>Fabric: 86% Cotton, 13% Nylon, 1% Elastane</p>	<p>One Size – UK8 – UK11</p>	<p>£4</p> <p>*Full time allowance is 5 pairs pp</p>

[Back to Index Page](#)



DESCRIPTION	SIZING RANGE	PRICE
<p>Women's Blue Houndstooth Long Sleeve Shirt – Cotton rich, semi-fitted shirt in a blue houndstooth pattern with button up collar and fly front. Shirt is sewn down over the bust to prevent any gaping.</p> <p>Branding: Garment is supplied plain</p> <p>Fabric: 60% Cotton, 40% Polyester</p>	UK6 – UK24	£22



DESCRIPTION	SIZING RANGE	PRICE
<p>Women's Blue Contemporary Waistcoat – Modern, sleek waistcoat with a Teflon coating for durability. Grey ribbed satin back with adjustable slider and functional jetted pockets customised with bespoke 'Harbour' teal colour fabric.</p> <p>Branding: Garment Supplied Plain – see above custom</p> <p>Fabric: 66% Polyester, 33% Viscose, 1% Lycra</p>	UK6 – UK26	£48

[Back to Index Page](#)



DESCRIPTION	SIZING RANGE	PRICE
<p>Women's Blue Contemporary Jacket – Modern suit jacket with notch neck detail and one button fastening for a contemporary look. Teflon coated for durability. Fully lined with internal breast pocket and functional jetted pockets. Customised with bespoke 'Harbour' teal colour fabric on the pockets.</p> <p>Branding: Garment Supplied Plain – see above custom</p> <p>Fabric: 66% Polyester, 33% Viscose, 1% Lycra</p>	UK6 – UK26	£78



DESCRIPTION	SIZING RANGE	PRICE
<p>Women's Black Slim Leg Trousers – Slim leg trouser with flat front design, side pockets and mock hip pockets. The slimmest style in the range for a contemporary look. Customised to be worn at a 'cropped' length.</p> <p>Branding: Harbour Hotels tax tab on back right waistband</p> <p>Fabric: 64% Polyester, 34% Viscose, 2% Elastane</p>	UK4 – UK24	£35

[Back to Index Page](#)



DESCRIPTION	SIZING RANGE	PRICE
<p>Women's Teal Glitter Socks – Short, light weight patterned socks in a glittery teal finish to add that finishing touch when worn with the cropped trousers & brogue footwear.</p> <p>Branding: Garment supplied plain</p> <p>Fabric: 57% Polyamide, 38% Polyester, 5% Elastane.</p>	One Size	<p>£4</p> <p>*Full time allowance is 5 pairs pp</p>

DESCRIPTION	SIZING RANGE	PRICE

[Back to Index Page](#)



DESCRIPTION	SIZING RANGE	PRICE
<p>Men's Blue Houndstooth Long Sleeve Shirt – Cotton rich, slim fit shirt in a blue houndstooth pattern with twin rear darts. Semi cutaway collar for a defined silhouette.</p> <p>Branding: Garment is supplied plain</p> <p>Fabric: 60% Cotton, 40% Polyester</p>	14" – 18" collar	£19.75



DESCRIPTION	SIZING RANGE	PRICE
<p>Men's Blue Contemporary Waistcoat – Modern, contemporary fit waistcoat with Teflon coating for durability and a sleek finish. Adjustable grey ribbed satin back and fully lined inner. Functional jetted pockets customised with bespoke 'Harbour' teal colour fabric.</p> <p>Branding: Garment supplied plain – see above custom</p> <p>Fabric: 66% Polyester, 33% Viscose, 1% Lycra</p>	34" – 52" chest	£48

[Back to Index Page](#)



DESCRIPTION	SIZING RANGE	PRICE
<p>Men's Blue Contemporary Jacket – Modern jacket with narrow lapels. Teflon coated for durability. Tapered sleeves for a contemporary look and functional jetted pockets with flaps. Internal breast pockets. Customised with bespoke 'Harbour' teal colour fabric on the upper pocket.</p> <p>Branding: Garment supplied plain – see above custom</p> <p>Fabric: 66% Polyester, 33% Viscose, 1% Lycra</p>	34" – 52" chest	£85



DESCRIPTION	SIZING RANGE	PRICE
<p>Men's Black Super Slim Trousers – Flat front, slim fit trouser which is the slimmest in the range and as close to a high street skinnier style. Customised to be worn at a 'cropped' length.</p> <p>Branding: Harbour Hotels tax tab on back right pocket</p> <p>Fabric: 64% Polyester, 34% Viscose, 2% Elastane</p>	28" – 40" waist	£35

[Back to Index Page](#)



DESCRIPTION	SIZING RANGE	PRICE
<p>Men's Blue Stripe Socks – Made in the UK. Bold blue stripe cotton socks in the 'Harbour' colour palette which add the 'pop' to the HarBar look when worn with the cropped trouser and brogue footwear! *Subject to inventory stock*</p> <p>Branding: Garment Supplied Plain</p> <p>Fabric: 86% Cotton, 13% Nylon, 1% Elastane</p>	One Size – UK8 – UK11	<p>£4</p> <p>*Full time allowance is 5 pairs pp</p>

DESCRIPTION	SIZING RANGE	PRICE

[Back to Index Page](#)



DESCRIPTION	SIZING RANGE	PRICE
<p>Women's Blue Houndstooth Long Sleeve Shirt – Cotton rich, semi-fitted shirt in a blue houndstooth pattern with button up collar and fly front. Shirt is sewn down over the bust to prevent any gaping.</p> <p>Branding: Garment is supplied plain</p> <p>Fabric: 60% Cotton, 40% Polyester</p>	UK6 – UK24	£22



DESCRIPTION	SIZING RANGE	PRICE
<p>Women's Navy Checked Shirt – High quality shirt in combed, easy care cotton with enhanced lining seams, collar and sleeve ends. Body in check pattern with contrast fabric under collar, placket, sleeves and neck tape. Modern fit. Shirt is sewn down over the bust to prevent any gaping.</p> <p>Branding: Garment is supplied plain</p> <p>Fabric: 100% Combed Cotton</p>	XS – 2XL (UK6 – UK18)	£43

[Back to Index Page](#)



DESCRIPTION	SIZING RANGE	PRICE
<p>Women's Blue Contemporary Jacket – Modern suit jacket with notch neck detail and one button fastening for a contemporary look. Teflon coated for durability. Fully lined with internal breast pocket and functional jetted pockets. Customised with bespoke 'Harbour' teal colour fabric on the pockets. Branding: Garment Supplied Plain – see above custom Fabric: 66% Polyester, 33% Viscose, 1% Lycra</p>	UK6 – UK26	£78



DESCRIPTION	SIZING RANGE	PRICE
<p>Women's Blue Contemporary Trousers – Flattering drop waist cigarette style trousers with a narrow leg line cut to finish on the ankle for a contemporary look. Permanent crease to keep the trousers looking chic wash after wash. Half lined, side pockets and belt loops. Branding: Harbour Hotels tax tab on reverse waistband Fabric: 66% Polyester, 33% Viscose, 1% Lycra</p>	UK6 – UK26 Reg or Unfinished (if alternative leg length needed)	£34.50

[Back to Index Page](#)



DESCRIPTION	SIZING RANGE	PRICE
<p>Men's Blue Houndstooth Long Sleeve Shirt – Cotton rich, slim fit shirt in a blue houndstooth pattern with twin rear darts. Semi cutaway collar for a defined silhouette.</p> <p>Branding: Garment is supplied plain</p> <p>Fabric: 60% Cotton, 40% Polyester</p>	14" – 18" collar	£19.75



DESCRIPTION	SIZING RANGE	PRICE
<p>Men's Navy Checked Shirt – High quality shirt in combed, easy care cotton with enhanced lining seams, collar and sleeve ends. Body in check pattern with contrast fabric under collar, placket, sleeves and neck tape. Modern fit.</p> <p>Branding: Garment is supplied plain</p> <p>Fabric: 100% Combed Cotton</p>	S – 3XL (36" – 46/48" chest)	£40.75

[Back to Index Page](#)



DESCRIPTION	SIZING RANGE	PRICE
<p>Men's Blue Contemporary Jacket – Modern jacket with narrow lapels. Teflon coated for durability. Tapered sleeves for a contemporary look and functional jetted pockets with flaps. Internal breast pockets. Customised with bespoke 'Harbour' teal colour fabric on the upper pocket.</p> <p>Branding: Garment supplied plain – see above custom</p> <p>Fabric: 66% Polyester, 33% Viscose, 1% Lycra</p>	34" – 52" chest	£85



DESCRIPTION	SIZING RANGE	PRICE
<p>Men's Blue Contemporary Trousers – Modern, flat front slim style trousers with tapered leg and sitting slightly lower on the hip. Front zip fastening, side pockets and back pockets. Half lined with loops. Permanent crease detail to keep the trousers looking smart wash after wash.</p> <p>Branding: Harbour Hotels tax tab on reverse waistband</p> <p>Fabric: 66% Polyester, 33% Viscose, 1% Lycra</p>	28" – 50" waist Inside leg lengths available: Reg 31" Long 33"	£35

[Back to Index Page](#)



DESCRIPTION	SIZING RANGE	PRICE
<p>Men's Blue Stripe Socks – Made in the UK. Bold blue stripe cotton socks in the 'Harbour' colour palette which add the 'pop' to the HarBar look when worn with the cropped trouser and brogue footwear! *Subject to inventory stock*</p> <p>Branding: Garment Supplied Plain</p> <p>Fabric: 86% Cotton, 13% Nylon, 1% Elastane</p>	One Size – UK8 – UK11	<p>£4</p> <p>*Full time allowance is 5 pairs pp</p>

DESCRIPTION	SIZING RANGE	PRICE

[Back to Index Page](#)

Richmond Harbour Hotel

Reception Team

Pages 151 - 156

The Gate Floor Team Pages

158 - 160



HARBOUR

HOTELS



DESCRIPTION	SIZING RANGE	PRICE
<p>Women's Premium White Contrast Shirt – High quality poplin fabric with easy care finish and easy iron. Contrast navy buttons and navy patterned fabric on inside of collar/cuffs. Rounded hem, waisted design for a feminine cut. Pleat on rear yoke. Sewn down over the bust to prevent gaping.</p> <p>Branding: Garment supplied plain</p> <p>Fabric: 100% Cotton, 100gsm</p>	XS – UK8 S – UK10 M – UK12/14 L – UK16/18 XL – UK20 2XL – UK22/24	£38



DESCRIPTION	SIZING RANGE	PRICE
<p>Women's Cranberry Melange Jumper – Crew neck jumper in a classic fit with contemporary styling. Elastane on ribbed cuffs and waistband trim to retain shape and a smart look. Quick to dry and easy care.</p> <p>Branding: Embroidered 'H' logo in tone-on-tone thread on left chest when worn</p> <p>Fabric: 50% Cotton, 50% Cotton Acrylic blend, 275gsm</p>	XXS – UK6 XS – UK8 S – UK10 M – UK12 L – UK14 XL – UK16 2XL – UK18 3XL – UK20 4XL – UK22	£31

[Back to Index Page](#)



IMAGE COMING SOON

DESCRIPTION	SIZING RANGE	PRICE
<p>Women's Denim Blue Melange Jumper – Crew neck jumper in a classic fit with contemporary styling. Elastane on ribbed cuffs and waistband trim to retain shape and a smart look. Quick to dry and easy care.</p> <p>Branding: Embroidered 'H' logo in tone-on-tone thread on left chest when worn</p> <p>Fabric: 50% Cotton, 50% Cotton Acrylic blend, 275gsm</p>	XXS – UK6 XS – UK8 S – UK10 M – UK12 L – UK14 XL – UK16 2XL – UK18 3XL – UK20 4XL – UK22	£31



DESCRIPTION	SIZING RANGE	PRICE
<p>Women's Stone Chino Trousers – Flat front chino trouser in a stretch fabric for ease of movement. Slanted front pockets, 2 back welt pockets and belt loops. Can be worn full length or rolled up.</p> <p>Branding: Harbour Hotels tax tab on back right pocket</p> <p>Fabric: 97% Cotton, 3% Elastane, 220gsm</p>	XS – UK8 S – UK10 M – UK12 L – UK14 XL – UK16 2XL – UK18	£28

[Back to Index Page](#)



DESCRIPTION	SIZING RANGE	PRICE
<p>Women's Navy Herringbone Jacket – Slim fit jacket in herringbone fabric with 1 button front, centre vent and 2 jet pockets. Welt chest pocket.</p> <p>Branding: Embroidered 'H' logo in tone-on-tone thread on left lapel when worn</p> <p>Fabric: 40% Wool, 40% Polyester, 20% Mix fabrics, Teflon finished</p>	UK8 – UK14 Petite UK6 – UK24 Regular UK8 – UK14 Long	£103



DESCRIPTION	SIZING RANGE	PRICE
<p>Women's Navy Herringbone Waistcoat – Notch lapel, 5 button front waistcoat with 2 welt pockets and a cloth back with vent detail and adjuster.</p> <p>Branding: Embroidered 'H' logo in tone-on-tone thread on left lapel when worn</p> <p>Fabric: 40% Wool, 40% Polyester, 20% Mix fabrics, Teflon finished</p>	XS – UK4/6 S – UK8/10 M – UK12/14 L – UK16/18 XL – UK20/22 2XL – UK24/26	£47.50

[Back to Index Page](#)



DESCRIPTION	SIZING RANGE	PRICE
<p>Men's Premium White Contrast Shirt – High quality poplin fabric with easy care finish and easy iron. Contrast navy buttons and navy patterned fabric on inside of collar/cuffs. Rounded hem.</p> <p>Branding: Garment supplied plain</p> <p>Fabric: 100% Cotton, 100gsm</p>	<p>S – 38/40" M – 42" L – 44" XL – 46" 2XL – 48/50" chest</p>	£36



DESCRIPTION	SIZING RANGE	PRICE
<p>Men's Cranberry Melange Jumper - Crew neck jumper in a classic fit with contemporary styling. Elastane on ribbed cuffs and waistband trim to retain shape and a smart look. Quick to dry and easy care.</p> <p>Branding: Embroidered 'H' logo in tone-on-tone thread on left chest when worn</p> <p>Fabric: 50% Cotton, 50% Cotton Acrylic blend, 275gsm</p>	<p>XXS – 32/34" XS – 34/36" S – 36/38" M – 38/40" L – 40/42" XL – 42/44" 2XL – 44/46" 3XL – 46/48" 4XL – 48/50" chest</p>	£31

[Back to Index Page](#)



DESCRIPTION	SIZING RANGE	PRICE
<p>Men's Denim Melange Jumper - Crew neck jumper in a classic fit with contemporary styling. Elastane on ribbed cuffs and waistband trim to retain shape and a smart look. Quick to dry and easy care.</p> <p>Branding: Embroidered 'H' logo in tone-on-tone thread on leftchest when worn</p> <p>Fabric: 50% Cotton, 50% Cotton Acrylic blend, 275gsm</p>	XXS – 32/34" XS – 34/36" S – 36/38" M – 38/40" L – 40/42" XL – 42/44" 2XL – 44/46" 3XL – 46/48" 4XL – 48/50" chest	£31



DESCRIPTION	SIZING RANGE	PRICE
<p>Men's Stone Chino Trousers - Flat front chino trouser in a stretch fabric for ease of movement. Slanted front pockets, 2 back welt pockets and belt loops. Can be worn full length or rolled up.</p> <p>Branding: Harbour Hotels tax tab on back right pocket</p> <p>Fabric: 97% Cotton, 3% Elastane, 220gsm</p>	28" – 40" waist Reg or Long	£28

[Back to Index Page](#)



DESCRIPTION	SIZING RANGE	PRICE
<p>Men's Navy Herringbone Jacket – Slim fit jacket in herringbone fabric with 2 button front, centre vent and 2 flap pockets. Welt chest pocket, 2 internal pockets and notch lapel.</p> <p>Branding: Embroidered 'H' logo in tone-on-tone thread on left lapel when worn</p> <p>Fabric: 40% Wool, 40% Polyester, 20% Mixed fabrics, Teflon finished</p>	36 – 44" Short 36 – 50" Regular 38 – 44" Long	£103



DESCRIPTION	SIZING RANGE	PRICE
<p>Men's Navy Herringbone Waistcoat – Notch lapel, 5 button front waistcoat with 2 welt pockets and cloth back. Back vent detail with adjuster.</p> <p>Branding: Embroidered 'H' logo in tone-on-tone thread on left lapel when worn</p> <p>Fabric: 40% Wool, 40% Polyester, 20% Mixed fabrics, Teflon finished</p>	S – 34/36" M – 38/40" L – 42/44" XL – 46/48" 2XL – 50/52" chest	£47.50

[Back to Index Page](#)

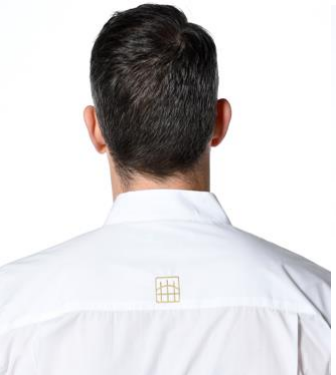


DESCRIPTION	SIZING RANGE	PRICE
<p>Women's White Mandarin Collar Shirt – Easy iron shirt with soft fused mandarin style collar. Concealed placket, rounded hem and two darts at the front for a feminine fit. Garment is sewn down over the bust to prevent gaping.</p> <p>Branding: The Gate embroidered logo on nape of neck, 30mm size in gold thread</p> <p>Fabric: 65% Polyester, 35% Cotton Poplin, 115gsm</p>	UK8 – UK18	£23.50



DESCRIPTION	SIZING RANGE	PRICE
<p>Contemporary Grey Canvas Bib Apron – Heavy quality, 160z canvas apron with PU contrast details. Adjustable straps at neck and on the sides. Large front pocket.</p> <p>Branding: The Gate embroidered logo on top left of pocket when worn, 40mm size in gold thread</p> <p>Fabric: Canvas</p>	One size	£27.50

[Back to Index Page](#)



DESCRIPTION	SIZING RANGE	PRICE
<p>Men's White Mandarin Collar Shirt – Easy iron shirt with soft fused mandarin style collar. Concealed front placket, rounded hem and two pleats at the back. 1 button adjustable cuff.</p> <p>Branding: The Gate embroidered logo on nape of neck, 30mm size in gold thread</p> <p>Fabric: 65% Polyester, 35% Cotton Poplin, 115gsm</p>	<p>S – 36/38" M – 40" L – 42" XL – 44" 2XL – 46/48" chest</p>	<p>£21.25</p>



DESCRIPTION	SIZING RANGE	PRICE
<p>Contemporary Grey Canvas Bib Apron – Heavy quality, 160z canvas apron with PU contrast details. Adjustable straps at neck and on the sides. Large front pocket.</p> <p>Branding: The Gate embroidered logo on top left of pocket when worn, 40mm size in gold thread</p> <p>Fabric: Canvas</p>	<p>One size</p>	<p>£27.50</p>

[Back to Index Page](#)

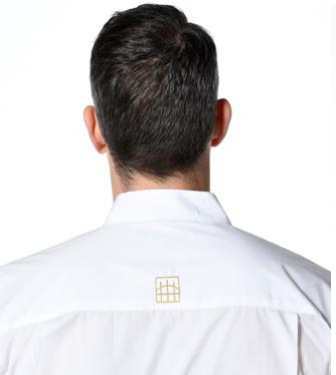


DESCRIPTION	SIZING RANGE	PRICE
<p>Women's White Mandarin Collar Shirt – Easy iron shirt with soft fused mandarin style collar. Concealed placket, rounded hem and two darts at the front for a feminine fit. Garment is sewn down over the bust to prevent gaping.</p> <p>Branding: The Gate embroidered logo on nape of neck, 30mm size in gold thread</p> <p>Fabric: 65% Polyester, 35% Cotton Poplin, 115gsm</p>	UK8 – UK18	£23.50



DESCRIPTION	SIZING RANGE	PRICE
<p>Contemporary Blue Canvas Bib Apron – Heavy quality, 160z canvas apron with PU contrast details. Adjustable straps at neck and on the sides. Large front pocket.</p> <p>Branding: The Gate embroidered logo on top left of pocket when worn, 40mm size in gold thread</p> <p>Fabric: Canvas</p>	One size	£27.50

[Back to Index Page](#)



DESCRIPTION	SIZING RANGE	PRICE
<p>Men's White Mandarin Collar Shirt – Easy iron shirt with soft fused mandarin style collar. Concealed front placket, rounded hem and two pleats at the back. 1 button adjustable cuff.</p> <p>Branding: The Gate embroidered logo on nape of neck, 30mm size in gold thread</p> <p>Fabric: 65% Polyester, 35% Cotton Poplin, 115gsm</p>	<p>S – 36/38" M – 40" L – 42" XL – 44" 2XL – 46/48" chest</p>	<p>£21.25</p>



DESCRIPTION	SIZING RANGE	PRICE
<p>Contemporary Blue Canvas Bib Apron – Heavy quality, 160z canvas apron with PU contrast details. Adjustable straps at neck and on the sides. Large front pocket.</p> <p>Branding: The Gate embroidered logo on top left of pocket when worn, 40mm size in gold thread</p> <p>Fabric: Canvas</p>	<p>One size</p>	<p>£27.50</p>

[Back to Index Page](#)

Fowey Harbour Hotel

Reception Team Pages 162- 169
F&B Team Pages 170 - 179



HARBOUR

HOTELS



DESCRIPTION	SIZING RANGE	PRICE
<p>Women's Premium White Contrast Shirt – High quality poplin fabric with easy care finish and easy iron. Contrast navy buttons and navy patterned fabric on inside of collar/cuffs. Sewn down over the bust to prevent gaping. <i>Supplied with a nude camisole to prevent show-through.</i></p> <p>Branding: Garment supplied plain</p> <p>Fabric: 100% Cotton, 100gsm</p>	XS – UK8 S – UK10 M – UK12/14 L – UK16/18 XL – UK20 2XL – UK22/24	£43



DESCRIPTION	SIZING RANGE	PRICE
<p>Women's V-Neck Cranberry Melange Jumper – V-Neck neck jumper in a classic fit with contemporary styling. Elastane on ribbed cuffs and waistband trim to retain shape and a smart look. Quick to dry and easy care.</p> <p>Branding: Embroidered 'H' logo in tone-on-tone thread on left chest when worn</p> <p>Fabric: 50% Cotton, 50% Cotton Acrylic blend, 275gsm</p>	XXS – UK6 XS – UK8 S – UK10 M – UK12 L – UK14 XL – UK16 2XL – UK18 3XL – UK20 4XL – UK22	£31

[Back to Index Page](#)



DESCRIPTION	SIZING RANGE	PRICE
<p>Women's Denim V-Neck Melange Jumper – V-neck jumper in a classic fit with contemporary styling. Elastane on ribbed cuffs and waistband trim to retain shape and a smart look. Quick to dry and easy care.</p> <p>Branding: Embroidered 'H' logo in tone-on-tone thread on left chest when worn</p> <p>Fabric: 50% Cotton, 50% Cotton Acrylic blend, 275gsm</p>	XXS – UK6 XS – UK8 S – UK10 M – UK12 L – UK14 XL – UK16 2XL – UK18 3XL – UK20 4XL – UK22	£31



DESCRIPTION	SIZING RANGE	PRICE
<p>Women's Navy Skinny Chino Trousers – Skinny fit but not too skinny, made with stretch fabric with a peached finish for comfort and ease of movement. Featuring zip fly with button fastening at waist, belt loops and slant pockets.</p> <p>Branding: Harbour Hotels tax tab on back right pocket</p> <p>Fabric: 98% Cotton, 2% Elastane, 290gsm</p>	UK6 – UK18 Reg: 30" Long: 32" leg	£28

[Back to Index Page](#)



DESCRIPTION	SIZING RANGE	PRICE
<p>Women's Navy Classic Chino Trousers – Slim, classic style chino with side pockets, twin hip jet pockets and a stretch waistband. More traditional in cut.</p> <p>Branding: Harbour Hotels tax tab on back right pocket</p> <p>Fabric: 97% Cotton, 3% Elastane</p>	<p>UK6 – UK24 Short: 27" Reg – 29" Long – 31" XL – 33" leg</p>	£32



DESCRIPTION	SIZING RANGE	PRICE
<p>Women's Tan Leather Belt – High st belt, most commonly from Next. 100% leather belt with brushed buckle detail.</p> <p>Branding: Garment supplied plain</p> <p>Fabric: 100% Leather</p>	<p>XS – XL (or we can convert your UK size for trouser)</p>	£15

[Back to Index Page](#)



DESCRIPTION	SIZING RANGE	PRICE
<p>Women's Navy Herringbone Jacket – Slim fit jacket in herringbone fabric with 1 button front, centre vent and 2 jet pockets. Welt chest pocket.</p> <p>Branding: Embroidered 'H' logo in tone-on-tone thread on left lapel when worn</p> <p>Fabric: 40% Wool, 40% Polyester, 20% Mix fabrics, Teflon finished</p>	UK8 – UK14 Petite UK6 – UK24 Regular UK8 – UK14 Long	£103



DESCRIPTION	SIZING RANGE	PRICE
<p>Women's Fudge Tweed Herringbone Jacket – Slim fit jacket in herringbone fabric with 1 button front, centre vent and 2 jet pockets. Welt chest pocket.</p> <p>Branding: Embroidered 'H' logo in navy thread on left lapel when worn</p> <p>Fabric: 40% Wool, 40% Polyester, 20% Mix fabrics, Teflon finished</p>	UK8 – UK14 Petite UK6 – UK24 Regular UK8 – UK14 Long	£103

[Back to Index Page](#)



DESCRIPTION	SIZING RANGE	PRICE
<p>Men's Premium White Contrast Shirt – High quality poplin fabric with easy care finish and easy iron. Contrast navy buttons and navy patterned fabric on inside of collar/cuffs. Rounded hem.</p> <p>Branding: Garment supplied plain</p> <p>Fabric: 100% Cotton, 100gsm</p>	<p>S – 38/40" M – 42" L – 44" XL – 46" 2XL – 48/50" chest</p>	£36



DESCRIPTION	SIZING RANGE	PRICE
<p>Men's Cranberry V-Neck Melange Jumper - neck jumper in a classic fit with contemporary styling. Elastane on ribbed cuffs and waistband trim to retain shape and a smart look. Quick to dry and easy care.</p> <p>Branding: Embroidered 'H' logo in tone-on-tone thread on left chest when worn</p> <p>Fabric: 50% Cotton, 50% Cotton Acrylic blend, 275gsm</p>	<p>XXS – 32/34" XS – 34/36" S – 36/38" M – 38/40" L – 40/42" XL – 42/44" 2XL – 44/46" 3XL – 46/48" 4XL – 48/50" chest</p>	£31

[Back to Index Page](#)



DESCRIPTION	SIZING RANGE	PRICE
<p>Men's Denim V- Neck Melange Jumper – V-neck jumper in a classic fit with contemporary styling. Elastane on ribbed cuffs and waistband trim to retain shape and a smart look. Quick to dry and easy care.</p> <p>Branding: Embroidered 'H' logo in tone-on-tone thread on left chest when worn</p> <p>Fabric: 50% Cotton, 50% Cotton Acrylic blend, 275gsm</p>	<p>XXS – 32/34" XS – 34/36" S – 36/38" M – 38/40" L – 40/42" XL – 42/44" 2XL – 44/46" 3XL – 46/48" 4XL – 48/50" chest</p>	£31



DESCRIPTION	SIZING RANGE	PRICE
<p>Men's Navy Skinny Chino Trousers – Slim fit chino made from stretch fabric for ease of movement. Featuring zip fly with button fastening at waist, belt loops and front slant pockets.</p> <p>Branding: Harbour Hotels tax tab on back right pocket</p> <p>Fabric: 98% Cotton, 2% Elastane, 290gsm</p>	<p>28" – 40" waist Reg: 31" Long: 33" leg</p>	£28

[Back to Index Page](#)



DESCRIPTION	SIZING RANGE	PRICE
<p>Men's Navy Classic Chino Trousers – Slim fit, flat front chino with side pockets, twin hip jet pockets with button and stretch waistband. More traditional in cut.</p> <p>Branding: Harbour Hotels tax tab on back right pocket</p> <p>Fabric: 97% Cotton, 3% Elastane</p>	<p>28 – 42" waist Short: 29.5" Reg: 31.5" Long: 33" leg</p>	<p>£32</p>



DESCRIPTION	SIZING RANGE	PRICE
<p>Men's Tan Leather Belt – High st belt, most commonly from Next. 100% leather belt with a width of approx. 2.8cm.</p> <p>Branding: Garment supplied plain</p> <p>Fabric: 100% Leather</p>	<p>XS – 3XL (or we can convert your UK size for trouser)</p>	<p>£15</p>

[Back to Index Page](#)



DESCRIPTION	SIZING RANGE	PRICE
<p>Men's Navy Herringbone Jacket – Slim fit jacket in herringbone fabric with 2 button front, centre vent and 2 flap pockets. Welt chest pocket, 2 internal pockets and notch lapel.</p> <p>Branding: Embroidered 'H' logo in tone-on-tone thread on left lapel when worn</p> <p>Fabric: 40% Wool, 40% Polyester, 20% Mixed fabrics, Teflon finished</p>	36 – 44" Short 36 – 50" Regular 38 – 44" Long	£103



DESCRIPTION	SIZING RANGE	PRICE
<p>Men's Fudge Tweed Herringbone Jacket – Slim fit jacket in herringbone fabric with 2 button front, centre vent and 2 flap pockets. Welt chest pocket, 2 internal pockets and notch lapel.</p> <p>Branding: Embroidered 'H' logo in navy thread on left lapel when worn</p> <p>Fabric: 40% Wool, 40% Polyester, 20% Mixed fabrics, Teflon finished</p>	36 – 44" Short 36 – 50" Regular 38 – 44" Long	£103

[Back to Index Page](#)



DESCRIPTION	SIZING RANGE	PRICE
<p>Women's White Contrast Herringbone Shirt – Light blue contrast inner on the collar and cuff. Princess line panels, dropped shoulders and a neat, feminine collar. Sewn down over the bust to prevent gaping.</p> <p>Branding: Garment is supplied plain</p> <p>Fabric: 75% Cotton, 35% Polyester</p>	UK6 – UK30	£18.50



DESCRIPTION	SIZING RANGE	PRICE
<p>Women's Navy Skinny Chino Trousers – Skinny fit but not too skinny, made with stretch fabric with a peached finish for comfort and ease of movement. Featuring zip fly with button fastening at waist, belt loops and slant pockets.</p> <p>Branding: Harbour Hotels tax tab on back right pocket</p> <p>Fabric: 98% Cotton, 2% Elastane, 290gsm</p>	UK6 – UK18 Reg: 30" Long: 32" leg	£28

[Back to Index Page](#)



DESCRIPTION	SIZING RANGE	PRICE
<p>Women's Navy Classic Chino Trousers – Slim, classic style chino with side pockets, twin hip jet pockets and a stretch waistband. More traditional in cut.</p> <p>Branding: Harbour Hotels tax tab on back right pocket</p> <p>Fabric: 97% Cotton, 3% Elastane</p>	<p>UK6 – UK24 Short: 27" Reg – 29" Long – 31" XL – 33" leg</p>	£32



DESCRIPTION	SIZING RANGE	PRICE
<p>Women's Tan Leather Belt – High st belt, most commonly from Next. 100% leather belt with brushed buckle detail.</p> <p>Branding: Garment supplied plain</p> <p>Fabric: 100% Leather</p>	<p>XS – XL (or we can convert your UK size for trouser)</p>	£15

[Back to Index Page](#)



DESCRIPTION	SIZING RANGE	PRICE
<p>Women's Premium Navy Patterned Shirt – high quality poplin fabric with an easy care finish and rounded hem. In a feminine cut with all over 'dots' pattern and contrast inner collar and cuffs. Customised so the bust is sewn down to prevent gaping.</p> <p>Branding: Garment supplied plain</p> <p>Fabric: 100% Cotton, 100gsm</p>	<p>XS – UK8 S – UK10 M – UK12/14 L – UK16/18 XL – UK20 2XL – UK22/24</p>	£40



DESCRIPTION	SIZING RANGE	PRICE
<p>Women's Navy Skinny Chinos – Skinny fit but not too skinny, made with stretch fabric with a peached finish for comfort and ease of movement. Featuring zip fly with button fastening at waist, belt loops and slant pockets.</p> <p>Branding: Harbour Hotels tax tab on back right pocket</p> <p>Fabric: 98% Cotton, 2% Elastane, 290gsm</p>	<p>UK6 – UK17</p> <p>Reg: 30" Long: 32"</p>	£28

[Back to Index Page](#)



DESCRIPTION	SIZING RANGE	PRICE
<p>Women's Navy Classic Chino Trousers – Slim, classic style chino with side pockets, twin hip jet pockets and a stretch waistband. More traditional in cut.</p> <p>Branding: Harbour Hotels tax tab on back right pocket</p> <p>Fabric: 97% Cotton, 3% Elastane</p>	<p>UK6 – UK24 Short: 27" Reg – 29" Long – 31" XL – 33" leg</p>	£32



DESCRIPTION	SIZING RANGE	PRICE
<p>Women's Tan Leather Belt – High st belt, most commonly from Next. 100% leather belt with brushed buckle detail.</p> <p>Branding: Garment supplied plain</p> <p>Fabric: 100% Leather</p>	<p>XS – XL (or we can convert your UK size for trouser)</p>	£15

[Back to Index Page](#)



DESCRIPTION	SIZING RANGE	PRICE
<p>*Supervisors* Women's Navy Chino Waistcoat – Chino waistcoat with 5 button front and notch lapel. 2 welt pockets, cloth back and vent detail with adjuster. Branding: Embroidered 'H' logo in tone-on-tone thread on left lapel when worn Fabric: 97% Cotton, 3% Elastane</p>	XS – UK4/6 S – UK8/10 M – UK12/14 L – UK16/18 XL – UK20/22 2XL – UK24/26	£45



DESCRIPTION	SIZING RANGE	PRICE
<p>*Managers* Women's Navy Chino Jacket – Tailored fit jacket in chino fabric identical to the chino waistcoat fabric. 2 button front with peaked lapel and centre vent. Branding: Embroidered 'H' logo in tone-on-tone thread on left lapel when worn Fabric: 97% Cotton, 3% Elastane</p>	UK8 – UK14 Petite UK6 – UK24 Regular UK8 – UK14 Long	£92

[Back to Index Page](#)



DESCRIPTION	SIZING RANGE	PRICE
<p>Men's White Contrast Herringbone Shirt – Contrast colour on the inner collar and cuff. Luxurious herringbone fabric in a tailored fit with a single cuff.</p> <p>Branding: Garment is supplied plain</p> <p>Fabric: 75% Cotton, 25% Polyester</p>	14.5" – 21" collar	£19.75



DESCRIPTION	SIZING RANGE	PRICE
<p>Men's Navy Skinny Chino Trousers – Slim fit chino made from stretch fabric for ease of movement. Featuring zip fly with button fastening at waist, belt loops and front slant pockets.</p> <p>Branding: Harbour Hotels tax tab on back right pocket</p> <p>Fabric: 98% Cotton, 2% Elastane, 290gsm</p>	28" – 40" waist Reg: 31" Long: 33" leg	£28

[Back to Index Page](#)



DESCRIPTION	SIZING RANGE	PRICE
<p>Men's Navy Classic Chino Trousers – Slim fit, flat front chino with side pockets, twin hip jet pockets with button and stretch waistband. More traditional in cut.</p> <p>Branding: Harbour Hotels tax tab on back right pocket</p> <p>Fabric: 97% Cotton, 3% Elastane</p>	<p>28 – 42" waist Short: 29.5" Reg: 31.5" Long: 33" leg</p>	<p>£32</p>



DESCRIPTION	SIZING RANGE	PRICE
<p>Men's Tan Leather Belt – High st belt, most commonly from Next. 100% leather belt with a width of approx. 2.8cm.</p> <p>Branding: Garment supplied plain</p> <p>Fabric: 100% Leather</p>	<p>XS – 3XL (or we can convert your UK size for trouser)</p>	<p>£15</p>

[Back to Index Page](#)



DESCRIPTION	SIZING RANGE	PRICE
<p>Men's Premium Navy Patterned Shirt – high quality poplin fabric with an easy care finish and rounded hem. Classic fit with a pleat on rear yoke. All over 'dot's print with contrast inner collar/cuffs.</p> <p>Branding: Garment supplied plain</p> <p>Fabric: 100% Cotton</p>	<p>S – 38/40" M – 42" L – 44" XL – 46" 2XL – 48/50" chest</p>	£37.75



DESCRIPTION	SIZING RANGE	PRICE
<p>Men's Navy Skinny Chinos – Slim fit chino made from stretch fabric for ease of movement. Featuring zip fly with button fastening at waist, belt loops and front slant pockets.</p> <p>Branding: Harbour Hotels tax tab on back right pocket</p> <p>Fabric: 98% Cotton, 2% Elastane, 290gsm</p>	<p>28" – 40" waist</p> <p>Reg: 31" Long: 33"</p>	£28

[Back to Index Page](#)



DESCRIPTION	SIZING RANGE	PRICE
<p>Men's Navy Classic Chino Trousers – Slim fit, flat front chino with side pockets, twin hip jet pockets with button and stretch waistband. More traditional in cut.</p> <p>Branding: Harbour Hotels tax tab on back right pocket</p> <p>Fabric: 97% Cotton, 3% Elastane</p>	<p>28 – 42" waist Short: 29.5" Reg: 31.5" Long: 33" leg</p>	<p>£32</p>



DESCRIPTION	SIZING RANGE	PRICE
<p>Men's Tan Leather Belt – High st belt, most commonly from Next. 100% leather belt with a width of approx. 2.8cm.</p> <p>Branding: Garment supplied plain</p> <p>Fabric: 100% Leather</p>	<p>XS – 3XL (or we can convert your UK size for trouser)</p>	<p>£15</p>

[Back to Index Page](#)



DESCRIPTION	SIZING RANGE	PRICE
<p>*Supervisors* Men's Navy Chino Waistcoat – 5 button front chino fabric waistcoat with 2 welt pockets and notch lapels. Cloth backed with adjuster.</p> <p>Branding: Embroidered 'H' logo in tone-on-tone thread on left lapel when worn</p> <p>Fabric: 97% Cotton, 3% Elastane</p>	<p>S – 36" M – 40" L – 44" XL – 48" 2XL – 52" chest</p>	£45



DESCRIPTION	SIZING RANGE	PRICE
<p>*Managers* Men's Navy Chino Jacket – Slim fit jacket with 2 button front, centre vent and patch pockets. Welt chest pocket with feature pocket square. 4 internal pockets.</p> <p>Branding: Embroidered 'H' logo in tone-on-tone thread on left lapel when worn</p> <p>Fabric: 97% Cotton, 3% Elastane</p>	<p>36 – 44" Short 36 – 50" Regular 38 – 46" Long</p>	£92

[Back to Index Page](#)

Padstow Harbour Hotel

Reception Team Pages - **Please**
see Fowey Page 162

F&B Team Pages Page 181 - 192



HARBOUR

HOTELS



DESCRIPTION	SIZING RANGE	PRICE
<p>Women's White Contrast Herringbone Shirt – Light blue contrast inner on the collar and cuff. Princess line panels, dropped shoulders and a neat, feminine collar. Sewn down over the bust to prevent gaping.</p> <p>Branding: Garment is supplied plain</p> <p>Fabric: 75% Cotton, 35% Polyester</p>	UK6 – UK30	£18.50



DESCRIPTION	SIZING RANGE	PRICE
<p>Women's Navy Skinny Chino Trousers – Skinny fit but not too skinny, made with stretch fabric with a peached finish for comfort and ease of movement. Featuring zip fly with button fastening at waist, belt loops and slant pockets.</p> <p>Branding: Harbour Hotels tax tab on back right pocket</p> <p>Fabric: 98% Cotton, 2% Elastane, 290gsm</p>	UK6 – UK18 Reg: 30" Long: 32" leg	£28

[Back to Index Page](#)



DESCRIPTION	SIZING RANGE	PRICE
<p>Women's Navy Classic Chino Trousers – Slim, classic style chino with side pockets, twin hip jet pockets and a stretch waistband. More traditional in cut.</p> <p>Branding: Harbour Hotels tax tab on back right pocket</p> <p>Fabric: 97% Cotton, 3% Elastane</p>	<p>UK6 – UK24 Short: 27" Reg – 29" Long – 31" XL – 33" leg</p>	£32



DESCRIPTION	SIZING RANGE	PRICE
<p>Women's Tan Leather Belt – High st belt, most commonly from Next. 100% leather belt with brushed buckle detail.</p> <p>Branding: Garment supplied plain</p> <p>Fabric: 100% Leather</p>	<p>XS – XL (or we can convert your UK size for trouser)</p>	£15

[Back to Index Page](#)



DESCRIPTION	SIZING RANGE	PRICE
<p>Women's Premium Navy Patterned Shirt – high quality poplin fabric with an easy care finish and rounded hem. In a feminine cut with all over 'dots' pattern and contrast inner collar and cuffs. Customised so the bust is sewn down to prevent gaping.</p> <p>Branding: Garment supplied plain</p> <p>Fabric: 100% Cotton, 100gsm</p>	<p>XS – UK8 S – UK10 M – UK12/14 L – UK16/18 XL – UK20 2XL – UK22/24</p>	£40



DESCRIPTION	SIZING RANGE	PRICE
<p>Women's Navy Skinny Chinos – Skinny fit but not too skinny, made with stretch fabric with a peached finish for comfort and ease of movement. Featuring zip fly with button fastening at waist, belt loops and slant pockets.</p> <p>Branding: Harbour Hotels tax tab on back right pocket</p> <p>Fabric: 98% Cotton, 2% Elastane, 290gsm</p>	<p>UK6 – UK17</p> <p>Reg: 30" Long: 32"</p>	£28

[Back to Index Page](#)



DESCRIPTION	SIZING RANGE	PRICE
<p>Women's Navy Classic Chino Trousers – Slim, classic style chino with side pockets, twin hip jet pockets and a stretch waistband. More traditional in cut.</p> <p>Branding: Harbour Hotels tax tab on back right pocket</p> <p>Fabric: 97% Cotton, 3% Elastane</p>	<p>UK6 – UK24 Short: 27" Reg – 29" Long – 31" XL – 33" leg</p>	£32



DESCRIPTION	SIZING RANGE	PRICE
<p>Women's Tan Leather Belt – High st belt, most commonly from Next. 100% leather belt with brushed buckle detail.</p> <p>Branding: Garment supplied plain</p> <p>Fabric: 100% Leather</p>	<p>XS – XL (or we can convert your UK size for trouser)</p>	£15

[Back to Index Page](#)



DESCRIPTION	SIZING RANGE	PRICE
<p>*Supervisors* Women's Navy Chino Waistcoat – Chino waistcoat with 5 button front and notch lapel. 2 welt pockets, cloth back and vent detail with adjuster. Branding: Embroidered 'H' logo in tone-on-tone thread on left lapel when worn Fabric: 97% Cotton, 3% Elastane</p>	XS – UK4/6 S – UK8/10 M – UK12/14 L – UK16/18 XL – UK20/22 2XL – UK24/26	£45



DESCRIPTION	SIZING RANGE	PRICE
<p>*Managers* Women's Navy Chino Jacket – Tailored fit jacket in chino fabric identical to the chino waistcoat fabric. 2 button front with peaked lapel and centre vent. Branding: Embroidered 'H' logo in tone-on-tone thread on left lapel when worn Fabric: 97% Cotton, 3% Elastane</p>	UK8 – UK14 Petite UK6 – UK24 Regular UK8 – UK14 Long	£92

[Back to Index Page](#)



DESCRIPTION	SIZING RANGE	PRICE
<p>Contemporary Stripe Waist Apron – Indigo blue with vertical stripes and contrast tape ties. Criss cross bar tacks, front pocket with divide, which holds a tablet device.</p> <p>Branding: Embroidered Harbour Hotels logo on bottom right of pocket when worn</p>	One Size	£20

DESCRIPTION	SIZING RANGE	PRICE
-------------	--------------	-------

[Back to Index Page](#)



DESCRIPTION	SIZING RANGE	PRICE
<p>Men's White Contrast Herringbone Shirt – Contrast colour on the inner collar and cuff. Luxurious herringbone fabric in a tailored fit with a single cuff.</p> <p>Branding: Garment is supplied plain</p> <p>Fabric: 75% Cotton, 25% Polyester</p>	14.5" – 21" collar	£19.75



DESCRIPTION	SIZING RANGE	PRICE
<p>Men's Navy Skinny Chino Trousers – Slim fit chino made from stretch fabric for ease of movement. Featuring zip fly with button fastening at waist, belt loops and front slant pockets.</p> <p>Branding: Harbour Hotels tax tab on back right pocket</p> <p>Fabric: 98% Cotton, 2% Elastane, 290gsm</p>	28" – 40" waist Reg: 31" Long: 33" leg	£28

[Back to Index Page](#)



DESCRIPTION	SIZING RANGE	PRICE
<p>Men's Navy Classic Chino Trousers – Slim fit, flat front chino with side pockets, twin hip jet pockets with button and stretch waistband. More traditional in cut.</p> <p>Branding: Harbour Hotels tax tab on back right pocket</p> <p>Fabric: 97% Cotton, 3% Elastane</p>	<p>28 – 42" waist Short: 29.5" Reg: 31.5" Long: 33" leg</p>	<p>£32</p>



DESCRIPTION	SIZING RANGE	PRICE
<p>Men's Tan Leather Belt – High st belt, most commonly from Next. 100% leather belt with a width of approx. 2.8cm.</p> <p>Branding: Garment supplied plain</p> <p>Fabric: 100% Leather</p>	<p>XS – 3XL (or we can convert your UK size for trouser)</p>	<p>£15</p>

[Back to Index Page](#)



DESCRIPTION	SIZING RANGE	PRICE
<p>Contemporary Stripe Waist Apron – Indigo blue with vertical stripes and contrast tape ties. Criss cross bar tacks, front pocket with divide, which holds a tablet device.</p> <p>Branding: Embroidered Harbour Hotels logo on bottom right of pocket when worn</p>	One Size	£20

DESCRIPTION	SIZING RANGE	PRICE
-------------	--------------	-------

[Back to Index Page](#)



DESCRIPTION	SIZING RANGE	PRICE
<p>Men's Premium Navy Patterned Shirt – high quality poplin fabric with an easy care finish and rounded hem. Classic fit with a pleat on rear yoke. All over 'dot's print with contrast inner collar/cuffs.</p> <p>Branding: Garment supplied plain</p> <p>Fabric: 100% Cotton</p>	<p>S – 38/40" M – 42" L – 44" XL – 46" 2XL – 48/50" chest</p>	£37.75



DESCRIPTION	SIZING RANGE	PRICE
<p>Men's Navy Skinny Chinos – Slim fit chino made from stretch fabric for ease of movement. Featuring zip fly with button fastening at waist, belt loops and front slant pockets.</p> <p>Branding: Harbour Hotels tax tab on back right pocket</p> <p>Fabric: 98% Cotton, 2% Elastane, 290gsm</p>	<p>28" – 40" waist</p> <p>Reg: 31" Long: 33"</p>	£28

[Back to Index Page](#)



DESCRIPTION	SIZING RANGE	PRICE
<p>Men's Navy Classic Chino Trousers – Slim fit, flat front chino with side pockets, twin hip jet pockets with button and stretch waistband. More traditional in cut.</p> <p>Branding: Harbour Hotels tax tab on back right pocket</p> <p>Fabric: 97% Cotton, 3% Elastane</p>	<p>28 – 42" waist Short: 29.5" Reg: 31.5" Long: 33" leg</p>	<p>£32</p>



DESCRIPTION	SIZING RANGE	PRICE
<p>Men's Tan Leather Belt – High st belt, most commonly from Next. 100% leather belt with a width of approx. 2.8cm.</p> <p>Branding: Garment supplied plain</p> <p>Fabric: 100% Leather</p>	<p>XS – 3XL (or we can convert your UK size for trouser)</p>	<p>£15</p>

[Back to Index Page](#)



DESCRIPTION	SIZING RANGE	PRICE
<p>*Supervisors* Men's Navy Chino Waistcoat – 5 button front chino fabric waistcoat with 2 welt pockets and notch lapels. Cloth backed with adjuster.</p> <p>Branding: Embroidered 'H' logo in tone-on-tone thread on left lapel when worn</p> <p>Fabric: 97% Cotton, 3% Elastane</p>	<p>S – 36" M – 40" L – 44" XL – 48" 2XL – 52" chest</p>	£45



DESCRIPTION	SIZING RANGE	PRICE
<p>*Managers* Men's Navy Chino Jacket – Slim fit jacket with 2 button front, centre vent and patch pockets. Welt chest pocket with feature pocket square. 4 internal pockets.</p> <p>Branding: Embroidered 'H' logo in tone-on-tone thread on left lapel when worn</p> <p>Fabric: 97% Cotton, 3% Elastane</p>	<p>36 – 44" Short 36 – 50" Regular 38 – 46" Long</p>	£92

[Back to Index Page](#)

St Ives Harbour Hotel

**Reception – Please order from either the
'Reception look page 96 OR the Fowey Reception
look for 'coastal' page 162**

F&B Team Pages Page 194 - 199



HARBOUR

HOTELS



DESCRIPTION	SIZING RANGE	PRICE
<p>Women's White Contrast Herringbone Shirt – Light blue contrast inner on the collar and cuff. Princess line panels, dropped shoulders and a neat, feminine collar. Sewn down over the bust to prevent gaping.</p> <p>Branding: Garment is supplied plain</p> <p>Fabric: 75% Cotton, 35% Polyester</p>	UK6 – UK30	£18.50



DESCRIPTION	SIZING RANGE	PRICE
<p>Women's Navy Skinny Chino Trousers – Skinny fit but not too skinny, made with stretch fabric with a peached finish for comfort and ease of movement. Featuring zip fly with button fastening at waist, belt loops and slant pockets.</p> <p>Branding: Harbour Hotels tax tab on back right pocket</p> <p>Fabric: 98% Cotton, 2% Elastane, 290gsm</p>	UK6 – UK18 Reg: 30" Long: 32" leg	£28

[Back to Index Page](#)



DESCRIPTION	SIZING RANGE	PRICE
<p>Women's Navy Classic Chino Trousers – Slim, classic style chino with side pockets, twin hip jet pockets and a stretch waistband. More traditional in cut.</p> <p>Branding: Harbour Hotels tax tab on back right pocket</p> <p>Fabric: 97% Cotton, 3% Elastane</p>	<p>UK6 – UK24 Short: 27" Reg – 29" Long – 31" XL – 33" leg</p>	£32



DESCRIPTION	SIZING RANGE	PRICE
<p>Women's Tan Leather Belt – High st belt, most commonly from Next. 100% leather belt with brushed buckle detail.</p> <p>Branding: Garment supplied plain</p> <p>Fabric: 100% Leather</p>	<p>XS – XL (or we can convert your UK size for trouser)</p>	£15

[Back to Index Page](#)



DESCRIPTION	SIZING RANGE	PRICE
<p>'HarBar' Southampton Alternative Aprons – *Updated style as of 2021* Long line waist apron, falling to 80cm in length. Including a useful centre pocket for carrying tablet devices, together with a combined pen pocket and apron is washable at 60c.</p> <p>Branding: Embroidered Harbour Hotels logo on bottom left of pocket</p> <p>Fabric: 100% Cotton Twill</p>	One Size	£13.50

DESCRIPTION	SIZING RANGE	PRICE

[Back to Index Page](#)



DESCRIPTION	SIZING RANGE	PRICE
<p>Men's White Contrast Herringbone Shirt – Contrast colour on the inner collar and cuff. Luxurious herringbone fabric in a tailored fit with a single cuff. Branding: Garment is supplied plain Fabric: 75% Cotton, 25% Polyester</p>	14.5" – 21" collar	£19.75



DESCRIPTION	SIZING RANGE	PRICE
<p>Men's Navy Skinny Chino Trousers – Slim fit chino made from stretch fabric for ease of movement. Featuring zip fly with button fastening at waist, belt loops and front slant pockets. Branding: Harbour Hotels tax tab on back right pocket Fabric: 98% Cotton, 2% Elastane, 290gsm</p>	28" – 40" waist Reg: 31" Long: 33" leg	£28

[Back to Index Page](#)



DESCRIPTION	SIZING RANGE	PRICE
<p>Men's Navy Classic Chino Trousers – Slim fit, flat front chino with side pockets, twin hip jet pockets with button and stretch waistband. More traditional in cut.</p> <p>Branding: Harbour Hotels tax tab on back right pocket</p> <p>Fabric: 97% Cotton, 3% Elastane</p>	<p>28 – 42" waist Short: 29.5" Reg: 31.5" Long: 33" leg</p>	<p>£32</p>



DESCRIPTION	SIZING RANGE	PRICE
<p>Men's Tan Leather Belt – High st belt, most commonly from Next. 100% leather belt with a width of approx. 2.8cm.</p> <p>Branding: Garment supplied plain</p> <p>Fabric: 100% Leather</p>	<p>XS – 3XL (or we can convert your UK size for trouser)</p>	<p>£15</p>

[Back to Index Page](#)



DESCRIPTION	SIZING RANGE	PRICE
<p>'HarBar' Southampton Alternative Aprons – *Updated style as of 2021* Long line waist apron, falling to 80cm in length. Including a useful centre pocket for carrying tablet devices, together with a combined pen pocket and apron is washable at 60c.</p> <p>Branding: Embroidered Harbour Hotels logo on bottom left of pocket</p> <p>Fabric: 100% Cotton Twill</p>	One Size	£13.50

DESCRIPTION	SIZING RANGE	PRICE

[Back to Index Page](#)

**Guildford Harbour Hotel
The Long Bar Page 201 - 205
Sales & Events Wardrobe
Page 206**



HARBOUR

HOTELS



DESCRIPTION	SIZING RANGE	PRICE
<p>Women's Navy Placket Shirt – Cotton rich, long sleeve blouse with a covered placket for a smart finish. Easy care and easy iron fabric.</p> <p>Branding: Embroidered 'The Long Bar' logo in terracotta thread on nape of neck</p> <p>Fabric: 55% Cotton, 45% Polyester</p>	UK6 – UK24	£21.25



DESCRIPTION	SIZING RANGE	PRICE
<p>Women's Navy Slim Leg Trouser – Slimmest style in the range with 2 side pockets, mock hip pockets and belt loops.</p> <p>Branding: Harbour Hotels tax tab on the back right waistband</p> <p>Fabric: 54% Polyester, 44% Wool, 2% Lycra, 270gsm, machine washable</p>	UK4 – UK24 Inside leg lengths available; Short 27" Regular 29" Long 31" X Long 33" & 36" unfinished	£44

[Back to Index Page](#)



DESCRIPTION	SIZING RANGE	PRICE
<p>Women's Navy Straight Skirt – Straight style skirt with centre vent, shaped back panels and full stretch lining. Sits on the natural waist, a simple yet classic style and fits true to size.</p> <p>Branding: Harbour Hotels tax tab on the back right waistband</p> <p>Fabric: 54% Polyester, 44% Wool, 2% Lycra, 270gsm, machine washable</p>	<p>UK2 – UK24 Regular 22"</p> <p>UK8 – UK24 Long 25"</p> <p>UK8 – UK24 X Long 27"</p>	£36



DESCRIPTION	SIZING RANGE	PRICE
<p>Unisex Terracotta Waist Apron – Enzyme washed canvas apron with two hip pockets with saddle stitching detail – pocket holds iPad2 or similar. Reinforced stress points. Fashion meets function.</p> <p>Branding: Embroidered 'The Long Bar' logo in navy thread on top right above pocket when worn</p> <p>Fabric: 100% Cotton, 315gsm</p>	One size	£21

[Back to Index Page](#)



DESCRIPTION	SIZING RANGE	PRICE
<p>Unisex Terracotta Chefs Apron – not exclusively for chefs! Is in a handy slightly wider shape to help with any spillages. Adjustable neck buckle, towel loop, utility chest pocket and longer cut. Reinforced stress points – fashion meets function.</p> <p>Branding: Embroidered 'The Long Bar' logo in navy thread in middle, above pockets.</p> <p>Fabric: 100% Cotton, 315gsm</p>	One size	£33.50

DESCRIPTION	SIZING RANGE	PRICE

[Back to Index Page](#)



DESCRIPTION	SIZING RANGE	PRICE
<p>Men's Navy Placket Shirt – Cotton rich, long sleeve shirt with twin rear darts for a defined silhouette. Semi cutaway collar. Easy care and easy iron fabric.</p> <p>Branding: Embroidered 'The Long Bar' logo in terracotta thread on nape of neck</p> <p>Fabric: 55% Cotton, 45% Polyester</p>	14 – 18" collar	£21.25



DESCRIPTION	SIZING RANGE	PRICE
<p>Men's Navy Super Slim Trousers – Slimmest style in the range, most similar to a high street slimmer style. Flat front design.</p> <p>Branding: Harbour Hotels tax tab on back right pocket</p> <p>Fabric: 64% Polyester, 34% Wool, 2% Elastane, machine washable</p>	<p>28" – 40" Waist</p> <p>Inside Leg lengths available; Short 29.5" Regular 31.5" Long 33" & 36" unfinished</p>	£35

[Back to Index Page](#)



DESCRIPTION	SIZING RANGE	PRICE
<p>Men's Denim Zip Close Chef Jacket – Easy to wear jacket with a concealed zip through fastening. Contrast lighter panels under the arm and on the sides. Mandarin style collar and side vents for comfort.</p> <p>Branding: Embroidered 'The Long Bar' logo in terracotta thread on front left chest</p> <p>Fabric: 60% Cotton, 40% Polyester, 230gsm</p>	XS – 30" S – 34" M – 38" L – 42" XL – 46" 2XL – 50" chest	£25.50

DESCRIPTION	SIZING RANGE	PRICE

[Back to Index Page](#)



NAVY

DESCRIPTION	SIZING RANGE	PRICE
<p>Women's Navy Stretch 3 Button Jacket - 3 Button with rounded lapel with inset seam detail and jetted side pockets. Plain back with princess seam & 'stay fresh technology'. Branding: Embroidered 'H' logo in tone-on-tone thread onto lapel – same thread as other HH suiting Fabric: 59% Polyester, 35% Viscose, 6% Elastane, 275gsm</p>	UK4 – UK22 Short UK4 – UK28 Reg UK8 – UK18 Long	£62



DESCRIPTION	SIZING RANGE	PRICE
<p>Women's Navy Stretch Zip Dress – V-Neck short sleeve dress with V cut out and back metal zip feature down the length of the dress. Centre back vent and stretch lining with 'stay fresh technology'. Branding: Embroidered 'H' logo in tone-on-tone thread on front left breast when worn – same thread as other HH suiting Fabric: 59% Polyester, 35% Viscose, 6% Elastane, 275gsm</p>	UK4 – UK28 Reg (95cm) UK8 – UK18 Long (105cm)	£57

[Back to Index Page](#)

Harbour Beach Club



HARBOUR

Beach Club

SALCOMBE



DESCRIPTION	SIZING RANGE	PRICE
<p>Women's Cotton Pink Organic Polo – Flat knit rib on collar and sleeve hem and set in sleeve for a comfort fit. Back is slightly longer than the front for additional comfort. Slit at side seams with herringbone facing.</p> <p>Branding: Embroidered Beach Club logo on front left chest</p> <p>Fabric: 95% Organic Ringspun Combed Cotton, 5% Elastane, 200gsm</p>	<p>XS – UK8 S – UK10 M – UK12 L – UK14 XL – UK16</p>	£19



DESCRIPTION	SIZING RANGE	PRICE
<p>Women's French Navy Organic Polo – Same item as described above but in the French Navy colourway so team members can be wearing a mix upon the floor. *This colourway also has a wider sizing range.</p> <p>Branding: Embroidered Beach Club logo on front left chest</p> <p>Fabric: 95% Organic Ringspun Combed Cotton, 5% Elastane, 200gsm</p>	<p>XS – UK8 S – UK10 M – UK12 L – UK14 XL – UK16 2XL – UK18*</p>	£19

[Back to Index Page](#)



DESCRIPTION	SIZING RANGE	PRICE
<p>Women's Navy Skinny Chino Trousers – Skinny fit but not too skinny, made with stretch fabric with a peached finish for comfort and ease of movement. Featuring zip fly with button fastening at waist, belt loops and slant pockets.</p> <p>Branding: Harbour Hotels tax tab on back right pocket</p> <p>Fabric: 98% Cotton, 2% Elastane, 290gsm</p>	<p>UK6 – UK18 Reg: 30" Long: 32" leg</p>	<p>£28</p>



DESCRIPTION	SIZING RANGE	PRICE
<p>Women's Navy Classic Chino Trousers – Slim, classic style chino with side pockets, twin hip jet pockets and a stretch waistband. More traditional in cut.</p> <p>Branding: Harbour Hotels tax tab on back right pocket</p> <p>Fabric: 97% Cotton, 3% Elastane</p>	<p>UK6 – UK24 Short: 27" Reg – 29" Long – 31" XL – 33" leg</p>	<p>£32</p>

[Back to Index Page](#)



DESCRIPTION	SIZING RANGE	PRICE
Women's Tan Leather Belt – High st belt. 100% leather belt with brushed buckle detail. Branding: Garment supplied plain Fabric: 100% Leather	XS – XL (or we can convert your UK size for trouser)	£15

DESCRIPTION	SIZING RANGE	PRICE
-------------	--------------	-------

[Back to Index Page](#)



DESCRIPTION	SIZING RANGE	PRICE
<p>Men's Cotton Pink Organic Polo – Flat knit rib on collar and sleeve hem. Front placket with 2 matching buttons. Single needle topstitch at shoulder seams. Back is slightly longer than the front for a comfort fit. Inside herringbone back neck tape.</p> <p>Branding: Embroidered Beach Club logo on front left chest</p> <p>Fabric: 100% Organic Ringspun Combed Cotton Pique, 230gsm</p>	<p>S – 36/38" M – 38/40" L – 41/43" XL – 43/45" 2XL – 46/47" chest</p>	£19



DESCRIPTION	SIZING RANGE	PRICE
<p>Men's French Navy Organic Polo – Same garment as described above but in the French Navy colourway, so team members can be wearing a mix upon the floor. *This colourway also has a wider sizing range.</p> <p>Branding: Embroidered Beach Club logo on front left chest</p> <p>Fabric: 100% Organic Ringspun Combed Cotton Pique, 230gsm</p>	<p>S – 36/38" M – 38/40" L – 41/43" XL – 43/45" 2XL – 46/47" 3XL – 48/50"* 4XL – 51/53"* chest</p>	£19

[Back to Index Page](#)



DESCRIPTION	SIZING RANGE	PRICE
<p>Men's Navy Skinny Chino Trousers – Slim fit chino made from stretch fabric for ease of movement. Featuring zip fly with button fastening at waist, belt loops and front slant pockets.</p> <p>Branding: Harbour Hotels tax tab on back right pocket</p> <p>Fabric: 98% Cotton, 2% Elastane, 290gsm</p>	<p>28" – 40" waist Reg: 31" Long: 33" leg</p>	<p>£28</p>



DESCRIPTION	SIZING RANGE	PRICE
<p>Men's Navy Classic Chino Trousers – Slim fit, flat front chino with side pockets, twin hip jet pockets with button and stretch waistband. More traditional in cut.</p> <p>Branding: Harbour Hotels tax tab on back right pocket</p> <p>Fabric: 97% Cotton, 3% Elastane</p>	<p>28 – 42" waist Short: 29.5" Reg: 31.5" Long: 33" leg</p>	<p>£32</p>

[Back to Index Page](#)



DESCRIPTION	SIZING RANGE	PRICE
Men's Tan Leather Belt – High st belt. 100% leather belt with a width of approx. 2.8cm. Branding: Garment supplied plain Fabric: 100% Leather	XS – 3XL (or we can convert your UK size for trouser)	£15

DESCRIPTION	SIZING RANGE	PRICE
-------------	--------------	-------

[Back to Index Page](#)

**HBC
F&B Floor Team
'EVENING' Look**





DESCRIPTION	SIZING RANGE	PRICE
<p>Women's Light Blue Premium Striped Shirt – High quality shirt in a combed cotton, easy care treated fabric with enhanced lining seams, collar and sleeve ends. Contrast fabric under collar, placket and sleeve cuffs. Garment is sewn down over the bust to prevent gaping.</p> <p>Branding: Embroidered Beach Club logo on nape of neck</p> <p>Fabric: 100% Combed Cotton, 135gsm</p>	<p>XS – UK6 S – UK8 M – UK10/12 L – UK14 XL – UK16 2XL – UK18</p>	£46



DESCRIPTION	SIZING RANGE	PRICE
<p>Women's Navy Skinny Chino Trousers – Skinny fit but not too skinny, made with stretch fabric with a peached finish for comfort and ease of movement. Featuring zip fly with button fastening at waist, belt loops and slant pockets.</p> <p>Branding: Harbour Hotels tax tab on back right pocket</p> <p>Fabric: 98% Cotton, 2% Elastane, 290gsm</p>	<p>UK6 – UK18 Reg: 30" Long: 32" leg</p>	£28

[Back to Index Page](#)



DESCRIPTION	SIZING RANGE	PRICE
<p>Women's Navy Classic Chino Trousers – Slim, classic style chino with side pockets, twin hip jet pockets and a stretch waistband. More traditional in cut.</p> <p>Branding: Harbour Hotels tax tab on back right pocket</p> <p>Fabric: 97% Cotton, 3% Elastane</p>	<p>UK6 – UK24 Short: 27" Reg – 29" Long – 31" XL – 33" leg</p>	£32



DESCRIPTION	SIZING RANGE	PRICE
<p>Women's Tan Leather Belt – High st belt. 100% leather belt with brushed buckle detail.</p> <p>Branding: Garment supplied plain</p> <p>Fabric: 100% Leather</p>	<p>XS – XL (or we can convert your UK size for trouser)</p>	£15

[Back to Index Page](#)



DESCRIPTION	SIZING RANGE	PRICE
<p>Men's Light Blue Premium Striped Shirt – High quality shirt in combed cotton, easy care treated fabric with enhanced lining seams, collar and sleeve ends. Contrast fabric under collar, placket and bottom sleeve. Modern fit.</p> <p>Branding: Embroidered Beach Club logo on nape of neck</p> <p>Fabric: 100% Combed Cotton, 135gsm</p>	<p>S – 36" M – 38" L – 40" XL – 42" 2XL – 44" 3XL – 46" chest</p>	£43.75



DESCRIPTION	SIZING RANGE	PRICE
<p>Men's Navy Skinny Chino Trousers – Slim fit chino made from stretch fabric for ease of movement. Featuring zip fly with button fastening at waist, belt loops and front slant pockets.</p> <p>Branding: Harbour Hotels tax tab on back right pocket</p> <p>Fabric: 98% Cotton, 2% Elastane, 290gsm</p>	<p>28" – 40" waist Reg: 31" Long: 33" leg</p>	£28

[Back to Index Page](#)



DESCRIPTION	SIZING RANGE	PRICE
<p>Men's Navy Classic Chino Trousers – Slim fit, flat front chino with side pockets, twin hip jet pockets with button and stretch waistband. More traditional in cut.</p> <p>Branding: Harbour Hotels tax tab on back right pocket</p> <p>Fabric: 97% Cotton, 3% Elastane</p>	<p>28 – 42" waist Short: 29.5" Reg: 31.5" Long: 33" leg</p>	<p>£32</p>



DESCRIPTION	SIZING RANGE	PRICE
<p>Men's Tan Leather Belt – High st belt. 100% leather belt with a width of approx. 2.8cm.</p> <p>Branding: Garment supplied plain</p> <p>Fabric: 100% Leather</p>	<p>XS – 3XL (or we can convert your UK size for trouser)</p>	<p>£15</p>

[Back to Index Page](#)

HBC F&B Supervisor Team





DESCRIPTION	SIZING RANGE	PRICE
<p>Women's Navy Premium Striped Shirt – High quality shirt in a combed cotton, easy care treated fabric with enhanced lining seams, collar and sleeve ends. Contrast fabric under collar, placket and sleeve cuffs. Garment is sewn down over the bust to prevent gaping.</p> <p>Branding: Embroidered Beach Club logo on nape of neck</p> <p>Fabric: 100% Combed Cotton, 135gsm</p>	XS – UK6 S – UK8 M – UK10/12 L – UK14 XL – UK16 2XL – UK18	£46

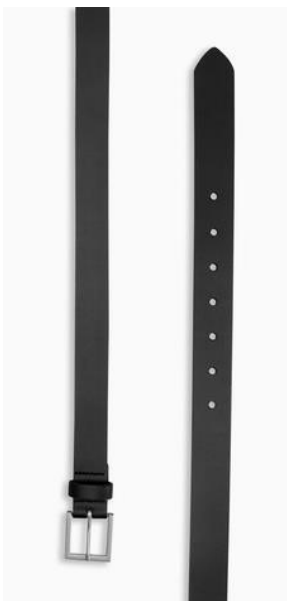


DESCRIPTION	SIZING RANGE	PRICE
<p>Women's Navy Chino Jacket – Tailored fit jacket in chino fabric identical to the chino waistcoat fabric. 2 button front with peaked lapel and centre vent.</p> <p>Branding: Embroidered Beach Club logo through top of left pocket when worn</p> <p>Fabric: 97% Cotton, 3% Elastane</p>	UK8 – UK14 Petite UK6 – UK24 Regular UK8 – UK14 Long	£92

[Back to Index Page](#)



DESCRIPTION	SIZING RANGE	PRICE
<p>Women's Navy Classic Chino Trousers – Slim, classic style chino with side pockets, twin hip jet pockets and a stretch waistband. More traditional in cut. *This style of chino matches the Chino Jacket fabric exactly.</p> <p>Branding: Harbour Hotels tax tab on back right pocket</p> <p>Fabric: 97% Cotton, 3% Elastane</p>	<p>UK6 – UK24 Short: 27" Reg – 29" Long – 31" XL – 33" leg</p>	£32



DESCRIPTION	SIZING RANGE	PRICE
<p>Women's Black Leather Belt – High st belt. 100% leather belt with brushed buckle detail.</p> <p>Branding: Garment supplied plain</p> <p>Fabric: 100% Leather</p>	<p>XS – XL (or we can convert your UK size for trouser)</p>	£15

[Back to Index Page](#)



DESCRIPTION	SIZING RANGE	PRICE
<p>Men's Navy Premium Striped Shirt – High quality shirt in a combed cotton, easy care treated fabric with enhanced lining seams, collar and sleeve ends. Contrast fabric under collar, placket and sleeve cuffs. Modern fit.</p> <p>Branding: Embroidered Beach Club logo on nape of neck</p> <p>Fabric: 100% Combed Cotton, 135gsm</p>	<p>S – 36" M – 38" L – 40" XL – 42" 2XL – 44" 3XL – 46" chest</p>	<p>£43.75</p>



DESCRIPTION	SIZING RANGE	PRICE
<p>Men's Navy Chino Jacket – Slim fit jacket with 2 button front, centre vent and patch pockets. Welt chest pocket with feature pocket square. 4 internal pockets.</p> <p>Branding: Embroidered Beach Club logo through top of left pocket when worn</p> <p>Fabric: 97% Cotton, 3% Elastane</p>	<p>36 – 44" Short 36 – 50" Regular 38 – 46" Long</p>	<p>£92</p>

[Back to Index Page](#)



DESCRIPTION	SIZING RANGE	PRICE
<p>Men's Navy Classic Chino Trousers – Slim fit, flat front chino with side pockets, twin hip jet pockets with button and stretch waistband. More traditional in cut. *This style of chino matches the fabric of the Chino Jacket exactly.</p> <p>Branding: Harbour Hotels tax tab on back right pocket</p> <p>Fabric: 97% Cotton, 3% Elastane</p>	<p>28 – 42" waist Short: 29.5" Reg: 31.5" Long: 33" leg</p>	<p>£32</p>



DESCRIPTION	SIZING RANGE	PRICE
<p>Men's Black Leather Belt – High st belt. 100% leather belt with a width of approx. 2.8cm.</p> <p>Branding: Garment supplied plain</p> <p>Fabric: 100% Leather</p>	<p>XS – 3XL (or we can convert your UK size for trouser)</p>	<p>£15</p>

[Back to Index Page](#)

HBC F&B Managers Team





DESCRIPTION	SIZING RANGE	PRICE
<p>Women's White Contrast Shirt – High quality combed cotton, easy care shirt with contrasting buttons, contrast fabric under collar, placket and bottom sleeve. In a modern fit with cutting seams at the back and sewn down over the bust to prevent gaping. This garment fits true to size.</p> <p>Branding: Embroidered Beach Club logo on nape of neck</p> <p>Fabric: 100% Cotton</p>	XS – UK6 S – UK8 M – UK10/12 L – UK14 XL – UK16 2XL – UK18	£44.50

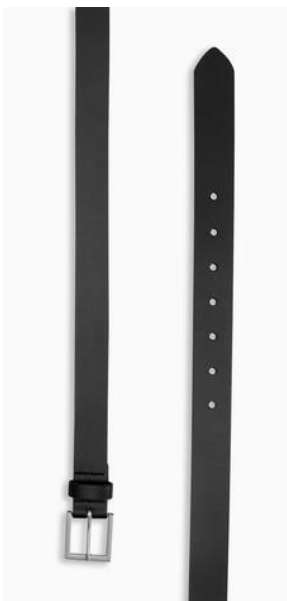


DESCRIPTION	SIZING RANGE	PRICE
<p>Women's Navy Chino Jacket – Tailored fit jacket in chino fabric identical to the chino waistcoat fabric. 2 button front with peaked lapel and centre vent.</p> <p>Branding: Embroidered Beach Club logo through top of left pocket when worn</p> <p>Fabric: 97% Cotton, 3% Elastane</p>	UK8 – UK14 Petite UK6 – UK24 Regular UK8 – UK14 Long	£92

[Back to Index Page](#)



DESCRIPTION	SIZING RANGE	PRICE
<p>Women's Navy Classic Chino Trousers – Slim, classic style chino with side pockets, twin hip jet pockets and a stretch waistband. More traditional in cut. *This style of chino matches the Chino Jacket fabric exactly.</p> <p>Branding: Harbour Hotels tax tab on back right pocket</p> <p>Fabric: 97% Cotton, 3% Elastane</p>	<p>UK6 – UK24 Short: 27" Reg – 29" Long – 31" XL – 33" leg</p>	£32



DESCRIPTION	SIZING RANGE	PRICE
<p>Women's Black Leather Belt – High st belt. 100% leather belt with brushed buckle detail.</p> <p>Branding: Garment supplied plain</p> <p>Fabric: 100% Leather</p>	<p>XS – XL (or we can convert your UK size for trouser)</p>	£15

[Back to Index Page](#)



DESCRIPTION	SIZING RANGE	PRICE
<p>Men's White Contrast Shirt – High quality combed cotton, easy care shirt with contrasting buttons, contrast fabric under collar, placket and bottom sleeve. In a modern contemporary fit with cutting seams at the back. This garment fits true to size.</p> <p>Branding: Embroidered Beach Club logo on nape of neck</p> <p>Fabric: 100% Cotton</p>	<p>S – 36" M – 38" L – 40" XL – 42" 2XL – 44" 3XL – 46" chest</p>	£42.25



DESCRIPTION	SIZING RANGE	PRICE
<p>Men's Navy Chino Jacket – Slim fit jacket with 2 button front, centre vent and patch pockets. Welt chest pocket with feature pocket square. 4 internal pockets.</p> <p>Branding: Embroidered Beach Club logo through top of left pocket when worn</p> <p>Fabric: 97% Cotton, 3% Elastane</p>	<p>36 – 44" Short 36 – 50" Regular 38 – 46" Long</p>	£92

[Back to Index Page](#)



DESCRIPTION	SIZING RANGE	PRICE
<p>Men's Navy Classic Chino Trousers – Slim fit, flat front chino with side pockets, twin hip jet pockets with button and stretch waistband. More traditional in cut. *This style of chino matches the fabric of the Chino Jacket exactly.</p> <p>Branding: Harbour Hotels tax tab on back right pocket</p> <p>Fabric: 97% Cotton, 3% Elastane</p>	<p>28 – 42" waist Short: 29.5" Reg: 31.5" Long: 33" leg</p>	<p>£32</p>



DESCRIPTION	SIZING RANGE	PRICE
<p>Men's Black Leather Belt – High st belt. 100% leather belt with a width of approx. 2.8cm.</p> <p>Branding: Garment supplied plain</p> <p>Fabric: 100% Leather</p>	<p>XS – 3XL (or we can convert your UK size for trouser)</p>	<p>£15</p>

[Back to Index Page](#)

Harbour Beach Club Reception Team





DESCRIPTION	SIZING RANGE	PRICE
<p>Women's White High Quality Oxford Shirt – High quality oxford shirt in a modern fit with tone-in-tone buttons and neck tape in a contrast light blue colour. This garment fits true to size and is sewn down over bust to prevent gaping.</p> <p>Branding: Embroidered Beach Club logo on front left chest</p> <p>Fabric: 100% Cotton</p>	<p>XS – UK6 S – UK8 M – UK10/12 L – UK14 XL – UK16 2XL – UK18</p>	£43.50



DESCRIPTION	SIZING RANGE	PRICE
<p>Women's Navy Chino Jacket – Tailored fit jacket in chino fabric identical to the chino waistcoat fabric. 2 button front with peaked lapel and centre vent.</p> <p>Branding: Embroidered Beach Club logo through top of left pocket when worn</p> <p>Fabric: 97% Cotton, 3% Elastane</p>	<p>UK8 – UK14 Petite UK6 – UK24 Regular UK8 – UK14 Long</p>	£92

[Back to Index Page](#)



DESCRIPTION	SIZING RANGE	PRICE
<p>Women's Navy Crew Neck Cardigan – Crew neck design with ribbed neck and placket. Tubular cuff and hem, think M&S in terms of cut and quality of this garment. Circular metal button front.</p> <p>Branding: Embroidered Beach Club logo on front left chest</p> <p>Fabric: 60% Cotton, 40% Acrylic, 12 gauge knit</p>	<p>XS – UK4/6 S – UK8 M – UK10/12 L – UK14 XL – UK16/18 2XL – UK20 3XL – UK22/24</p>	£28



DESCRIPTION	SIZING RANGE	PRICE
<p>Women's Stone Chino Trousers – Flat front chino trouser in a stretch fabric for ease of movement. Slanted front pockets, 2 back welt pockets and belt loops. Can be worn full length or rolled up.</p> <p>Branding: Harbour Hotels tax tab on back right pocket</p> <p>Fabric: 97% Cotton, 3% Elastane, 220gsm</p>	<p>XS – UK8 S – UK10 M – UK12 L – UK14 XL – UK16 2XL – UK18</p>	£28

[Back to Index Page](#)



DESCRIPTION	SIZING RANGE	PRICE
Women's Tan Leather Belt – High st belt. 100% leather belt with brushed buckle detail. Branding: Garment supplied plain Fabric: 100% Leather	XS – XL (or we can convert your UK size for trouser)	£15

DESCRIPTION	SIZING RANGE	PRICE
-------------	--------------	-------

[Back to Index Page](#)



DESCRIPTION	SIZING RANGE	PRICE
<p>Men's White High Quality Oxford Shirt – High quality Oxford shirt in a modern fit with tone-in-tone buttons and neck tape in contrast light blue colour. This garment fits true to size.</p> <p>Branding: Embroidered Beach Club logo on front left chest</p> <p>Fabric: 100% Cotton</p>	<p>S – 36" M – 38" L – 40" XL – 42" 2XL – 44" 3XL – 46/48" chest</p>	£41.25



DESCRIPTION	SIZING RANGE	PRICE
<p>Men's Navy Chino Jacket – Slim fit jacket with 2 button front, centre vent and patch pockets. Welt chest pocket with feature pocket square. 4 internal pockets.</p> <p>Branding: Embroidered Beach Club logo through top of left pocket when worn</p> <p>Fabric: 97% Cotton, 3% Elastane</p>	<p>36 – 44" Short 36 – 50" Regular 38 – 46" Long</p>	£92

[Back to Index Page](#)



DESCRIPTION	SIZING RANGE	PRICE
<p>Men's Navy ¼ Zip Knitted Jumper – 1/4 zip with faux leather zip pull and ribbed neck, cuff and hem. Think M&S in terms of cut and quality of this garment.</p> <p>Branding: Embroidered Beach Club logo on front left chest</p> <p>Fabric: 100% Cotton</p>	<p>XS – 34/36" S – 38" M – 40/42" L – 44" XL – 46/48" 2XL – 50" 3XL – 52/54" chest</p>	£29



DESCRIPTION	SIZING RANGE	PRICE
<p>Men's Stone Chino Trousers - Flat front chino trouser in a stretch fabric for ease of movement. Slanted front pockets, 2 back welt pockets and belt loops. Can be worn full length or rolled up.</p> <p>Branding: Harbour Hotels tax tab on back right pocket</p> <p>Fabric: 97% Cotton, 3% Elastane, 220gsm</p>	<p>28" – 40" waist Reg or Long</p>	£28

[Back to Index Page](#)



DESCRIPTION	SIZING RANGE	PRICE
Men's Tan Leather Belt – High st belt. 100% leather belt with a width of approx. 2.8cm. Branding: Garment supplied plain Fabric: 100% Leather	XS – 3XL (or we can convert your UK size for trouser)	£15

DESCRIPTION	SIZING RANGE	PRICE
-------------	--------------	-------

[Back to Index Page](#)

Harbour Beach Club Porters Team





DESCRIPTION	SIZING RANGE	PRICE
<p>Unisex White/Navy Tipped Polo – Modern polo shirt with a mandarin style collar with navy tipping detail. Stand collar and flat knit cuffs. Stretch micro pique fabric for a modern, comfortable fit.</p> <p>Branding: Embroidered Beach Club logo on front breast</p> <p>Fabric: 96% Cotton, 4% Elastane, 200gsm</p>	<p>XS – 34/36" S – 36/38" M – 38/40" L – 42" XL – 44/46" 2XL – 48" chest</p>	£16.75



DESCRIPTION	SIZING RANGE	PRICE
<p>Women's Stone Chino Trousers – Flat front chino trouser in a stretch fabric for ease of movement. Slanted front pockets, 2 back welt pockets and belt loops. Can be worn full length or rolled up.</p> <p>Branding: Harbour Hotels tax tab on back right pocket</p> <p>Fabric: 97% Cotton, 3% Elastane, 220gsm</p>	<p>XS – UK8 S – UK10 M – UK12 L – UK14 XL – UK16 2XL – UK18</p>	£28

[Back to Index Page](#)



DESCRIPTION	SIZING RANGE	PRICE
<p>Women's Navy Fitted Softshell Jacket – Feminine styled in a short, fitted cut. Wind/water repellent PU coating, sleeve pocket with accent zipper. Ventilation under arms. <i>**This garment sizes up small, if you would like a more comfortable fit, please choose one size up**</i></p> <p>Branding: Embroidered larger Beach Club logo on front breast</p> <p>Fabric: 100% Nylon, Wind/Water Repellent Coating, 145gsm</p>	<p>XS – UK8 S – UK10 M – UK12 L – UK14 XL – UK16 2XL – UK18 3XL – UK20</p>	<p>£72</p>



DESCRIPTION	SIZING RANGE	PRICE
<p>Unisex Navy Tipped Blouson Style Jacket – Modern, unisex jacket with 2 front pockets with zipper and 1 inner pocket. White contrast tipping detail in neck rim.</p> <p>Branding: Embroidered larger Beach Club logo on the front breast</p> <p>Fabric: 100% Nylon Taslan, PU coating and mesh lining</p>	<p>XS – 36" S – 38" M – 40" L – 42" XL – 44" 2XL – 46/48" 3XL - 50/52" chest</p>	<p>£37</p>

[Back to Index Page](#)



DESCRIPTION	SIZING RANGE	PRICE
Women's Tan Leather Belt – High st belt. 100% leather belt with brushed buckle detail. Branding: Garment supplied plain Fabric: 100% Leather	XS – XL (or we can convert your UK size for trouser)	£15

DESCRIPTION	SIZING RANGE	PRICE
-------------	--------------	-------

[Back to Index Page](#)



DESCRIPTION	SIZING RANGE	PRICE
<p>Unisex White/Navy Tipped Polo – Modern polo shirt with a mandarin style collar with navy tipping detail. Stand collar and flat knit cuffs. Stretch micro pique fabric for a modern, comfortable fit.</p> <p>Branding: Embroidered Beach Club logo on front breast</p> <p>Fabric: 96% Cotton, 4% Elastane, 200gsm</p>	<p>XS – 34/36" S – 36/38" M – 38/40" L – 42" XL – 44/46" 2XL – 48" chest</p>	£16.75



DESCRIPTION	SIZING RANGE	PRICE
<p>Men's Stone Chino Trousers - Flat front chino trouser in a stretch fabric for ease of movement. Slanted front pockets, 2 back welt pockets and belt loops. Can be worn full length or rolled up.</p> <p>Branding: Harbour Hotels tax tab on back right pocket</p> <p>Fabric: 97% Cotton, 3% Elastane, 220gsm</p>	<p>28" – 40" waist</p> <p>Reg or Long</p>	£28

[Back to Index Page](#)



DESCRIPTION	SIZING RANGE	PRICE
<p>Men's Navy 1/4 Zip Knitted Jumper – 1/4 zip with faux leather zip pull and ribbed neck, cuff and hem. Think M&S in terms of cut and quality of this garment.</p> <p>Branding: Embroidered Beach Club logo on front left chest</p> <p>Fabric: 100% Cotton</p>	<p>XS – 34/36" S – 38" M – 40/42" L – 44" XL – 46/48" 2XL – 50" 3XL – 52/54" chest</p>	£29



DESCRIPTION	SIZING RANGE	PRICE
<p>Men's Tan Leather Belt – High st belt. 100% leather belt with a width of approx. 2.8cm.</p> <p>Branding: Garment supplied plain</p> <p>Fabric: 100% Leather</p>	<p>XS – 3XL (or we can convert your UK size for trouser)</p>	£15

[Back to Index Page](#)



DESCRIPTION	SIZING RANGE	PRICE
<p>Men's Navy Fitted Softshell Jacket – Slight fitted, medium short cut. Wind and water repellent PU coating, sleeve pocket with accent zipper and windbreaker cuff inside sleeves. Ventilation under arms. Adjustable at lower waist.</p> <p>Branding: Embroidered Beach Club logo on front breast</p> <p>Fabric: 100% Nylon, Wind/Water Repellent Coating, 145gsm</p>	<p>S – 38" M – 40" L – 42" XL – 44" 2XL – 46" 3XL – 48" 4XL – 50" chest</p>	£72



DESCRIPTION	SIZING RANGE	PRICE
<p>Unisex Navy Tipped Blouson Style Jacket – Modern, unisex jacket with 2 front pockets with zipper and 1 inner pocket. White contrast tipping detail in neck rim.</p> <p>Branding: Embroidered Beach Club logo on the front breast</p> <p>Fabric: 100% Nylon Taslan, PU coating and mesh lining</p>	<p>XS – 36" S – 38" M – 40" L – 42" XL – 44" 2XL – 46/48" 3XL - 50/52" chest</p>	£37

[Back to Index Page](#)

Miscellaneous Aprons

HARBOUR

HOTELS



DESCRIPTION	SIZING RANGE	PRICE
<p>'HarBar' Southampton Alternative Aprons – *Updated style as of 2021* Long line waist apron, falling to 80cm in length. Including a useful centre pocket for carrying tablet devices, together with a combined pen pocket and apron is washable at 60c. Branding: Embroidered Harbour Hotels logo on bottom left of pocket Fabric: 100% Cotton Twill</p>	One Size	£13.50



DESCRIPTION	SIZING RANGE	PRICE
<p>The Ship Grey (Jetty) Apron – Wide waist apron, extra hard wearing with anti-tangle ties that won't tangle when washed. Centre pocket which is customised to make 2 front pockets for ease. Can be washed on an industrial wash at 65c. Branding: Embroidered The Ship logo in dark navy on front side of apron and Harbour Hotels tax tab on the reverse waistband Fabric: 65% Polyester, 35% Cotton, 245gsm</p>	One Size – 91cm wide x 61cm long	£17

[Back to Index Page](#)

HHG Group Merchandise

HARBOUR

HOTELS



DESCRIPTION	SIZING RANGE	PRICE
<p>'Cross' Black & Navy Notebook – Medium sized high quality leatherette notebook, a gorgeous giveaway. Flexible black cover which features an accent of navy in the corner with an elastic angled closure and a ribbon to mark pages. Pen holder incorporated into the spine, featuring a Cross pen. 160 pages of 100gsm acid free paper.</p> <p>Branding: Debossed Harbour Hotels logo on the front cover</p>	Various Sizes Available	Price depends upon quantity

DESCRIPTION	SIZING RANGE	PRICE

[Back to Index Page](#)

4couture.com

DELIVERING STYLE

harbourhotels@4couture.com

0845 226 0880